

Convery, Ian ORCID: <https://orcid.org/0000-0003-2527-5660> , Smith, Darrell  
ORCID: <https://orcid.org/0000-0002-6745-8804> , Brady, Deborah, Hawkins,  
Sally, Mayhew, Michael ORCID: <https://orcid.org/0000-0002-2934-5489> , van  
Maanen, Erwin, Iversen, Sara, White, Chris, Eagle, Adam and Lipscombe, Steve  
(2017) Community consultation report: Kielder. (Unpublished)

Downloaded from: <https://insight.cumbria.ac.uk/id/eprint/3802/>

***Usage of any items from the University of Cumbria's institutional repository 'Insight' must conform to the following fair usage guidelines.***

Any item and its associated metadata held in the University of Cumbria's institutional repository Insight (unless stated otherwise on the metadata record) may be copied, displayed or performed, and stored in line with the JISC fair dealing guidelines (available [here](#)) for educational and not-for-profit activities

**provided that**

- the authors, title and full bibliographic details of the item are cited clearly when any part of the work is referred to verbally or in the written form
  - a hyperlink/URL to the original Insight record of that item is included in any citations of the work
- the content is not changed in any way
- all files required for usage of the item are kept together with the main item file.

**You may not**

- sell any part of an item
- refer to any part of an item without citation
- amend any item or contextualise it in a way that will impugn the creator's reputation
- remove or alter the copyright statement on an item.

The full policy can be found [here](#).

Alternatively contact the University of Cumbria Repository Editor by emailing [insight@cumbria.ac.uk](mailto:insight@cumbria.ac.uk).

## **Community Consultation Report: Kielder<sup>1</sup>**

**Date Issued:**

**Contact Details:**

[lan.convery@cumbria.ac.uk](mailto:lan.convery@cumbria.ac.uk)

---

<sup>1</sup> Suggested citation: Convery I, Smith D, Brady D, Hawkins S, Mayhew M, van Maanen, E., Iversen, S., White, C., Eagle, A. & Lipscombe, S (2017) *Interim Community Consultation Report: Kielder*. Prepared for the Lynx UK Trust. University of Cumbria, UK.

## Contents

	Page
<b>1. Executive Summary</b>	<b>2</b>
<b>2. Introduction</b>	<b>3</b>
<b>3. Background</b>	<b>5</b>
<b>4. Methods</b>	<b>6</b>
4.1 Parish Council Meetings	7
4.2 Open Public Meetings	8
4.3 Drop-in Sessions	9
4.4 Door-to-door	9
4.5 Farming Community Engagement	10
4.6 Business Community Engagement	12
4.7 Friends of the lynx	12
4.8 Q methodological study	13
<b>5. Findings</b>	<b>14</b>
5.1 Initial risks/benefits questionnaire	14
5.1.1 Risks	15
5.1.2 Benefits	18
5.2 Q methods	20
<b>6. Discussion</b>	<b>25</b>

## Appendices

Appendix I Detailed Consultation Plan progress (updated)

Appendix II Example presentation slides

Appendix III Summary notes from Q&A sessions

Appendix IV Community questionnaire

Appendix V Information leaflet left during door knocking

Appendix VI Farming group meeting notes

Appendix VII Business forum meeting notes

Appendix VIII Q set

Appendix IX Mapping consultation activity against the 10 IUCN Social Feasibility Guidelines

## 1. Executive Summary

This report is based on consultation work completed on behalf of the Lynx UK Trust (LUKT) in and around the Kielder area from August 2016 to May 2017, and was requested by the LUKT to fit with their timeline for a licence submission to trial a reintroduction of Eurasian lynx (*lynx lynx*) to the UK. As the planned consultation activities are incomplete, this is presented as an interim report, and conclusions should be considered as tentative. Nevertheless, initial findings point towards a reasonably divided community, with most residents still undecided or unsure regarding the proposed reintroduction of lynx and a small minority either firmly supporting or opposing the project. This position is similar to the results of an independent national omnibus survey conducted as part of a national public survey in respect of the proposed trial lynx reintroduction (Smith et al., 2015).

At this point in the local consultation process there has been insufficient communication with those groups likely to be most affected by the project: primarily from the farming and forestry sector (IUCN, 2013:11). This is one of the IUCN's key social feasibility guidelines (Social Feasibility 5.3.3) and for key areas of project policy, for example around livestock predation compensation schemes and mitigation measures, we would expect to see genuine co-development of policy and protocols with the farming community. This work has started in Kielder but given the controversial nature of this project it will take considerable time and effort to establish a trusting relationship with some of the human communities in and around the Kielder area. As the IUCN (2013:11) indicates, understanding the 'extreme and internally contradictory attitudes of such key stakeholders provides the basis for developing public relations...orienting the public in favour of a translocation.' It is **our view that any licence application at this stage would be premature and would threaten the longer-term viability of the project.**

## 2. Introduction

The University of Cumbria (UoC) was asked to develop a community engagement programme for the Lynx UK Trust (LUKT) as part of the LUKT's proposal for a trial reintroduction of Eurasian lynx (*lynx lynx*) to the UK (herein referred to as 'the trial' and 'lynx' respectively). The national stakeholder consultation exercise conducted by Smith et al. (2015) identified Aberdeenshire and Kielder as appropriate sites for further investigation, and subsequent work by AECOM narrowed this down further to the Kielder area. The aim of this report is to outline progress achieved to date and present the resulting data from the activities outlined in the consultation plan.

Public consultation is a key element of any reintroduction proposal, and the International Union for Conservation of Nature (IUCN) Reintroduction Guidelines and Directive 92/43/EEC Conservation of Natural Habitats, Wild Flora and Fauna (the Habitats Directive) Article 22 and The Scottish Code for Conservation Translocations (2014) state that reintroduction should only take place after proper consultation with the public concerned. Carnivore reintroductions also require consideration for conservation plans over large spatial scales (Kaczensky et al., 2012), creating a demand for wide-scale consultation. Wilson (2004) identified that attitudes to reintroductions (and particularly carnivores) tended to be favourable among the general public, but negative among those likely to be adversely affected. For example, the illegal persecution of lynx in Switzerland is the legacy of a reintroduction program in the 1970s that excluded and disenfranchised sheep farmers and hunters (Breitenmoser and Breitenmoser-Würsten, 2004). Switzerland was the first country to authorize the reintroduction of lynx to the Alps following the ratification of a Swiss federal government resolution in 1967 (Breitenmoser and Breitenmoser-Würsten, 2004). However, the subsequent releases were clandestine and initially denied in public. Furthermore, the founder population were not radio-collared and no post-release monitoring was undertaken (Breitenmoser and Breitenmoser-Würsten, 2004). The lack of public consultation and covert nature of the releases created conflict within rural communities and resulted in illegal killing as

the most common cause of adult mortality in the early post-reintroduction period (Breitenmoser and Breitenmoser-Würsten, 2004; Schmidt-Posthaus et al., 2002).

As a result of such experiences, it is now accepted that in addition to ecological research, reintroduction outcomes are determined by the attitudes and behaviour of the public and regional stakeholder groups (Marshall et al., 2007; Thirgood and Redpath, 2008). A robust public consultation exercise is an essential tool to explore contentious issues and identify perceived or actual threats to the interests of any party. Such findings will enable conflict mediators to acknowledge concerns and seek solutions through an inclusive and transparent approach to public engagement.

Our local consultation document (Appendix I) sets out a detailed plan for consultation and engagement activities in the Kielder area. In brief, open community (parish) meetings provide an introduction to the project and an opportunity for the community to ask questions. A follow up risks/benefits questionnaire, together with formal and informal community meetings (pub drop-in events, etc.) provides the context and statements to develop a Q methods approach. Further focus group meetings (with communities of interest; business, farming and forestry) can then be used to develop key areas of project policy and establish a communications platform for ongoing engagement work.

It was intended that consultation activities should be completed by March 2017, however due to our approach, which emphasised flexibility and responsiveness to community needs and requests, our methods and timelines changed over time. The detailed consultation plan, provided in Appendix 1, has been updated to reflect the current status of each intended activity as well as the available data. At the time of writing this report key areas of the consultation plan have not been addressed; in particular there has been only limited engagement with the farming community and only a small number of the planned the Q methods interviews have been completed.

### **3. Background to local consultation**

In October 2015 the LUKT announced their proposal for a 'controlled, scientific and monitored trial reintroduction of lynx' to England and/or Scotland. Smith et al. (2015b & 2015c) outline the proposed consultation process and details on the feasibility, benefits and opportunities, risks and impacts, and potential mitigation measures. These documents made extensive use of and reference to knowledge and experience gained from mainland European lynx reintroduction projects. It was through these documents and associated consultation activities that an open invitation was extended for all stakeholders to actively participate in a transparent, accessible, unbiased and constructive process of discussion and collaboration.

A national survey (Smith et al., 2015a) was conducted over 2015-2016 to investigate the public desirability of a trial lynx reintroduction, and this work identified broad public support for the project. A subsequent national stakeholder consultation exercise based on the content of these documents (Smith et al., 2016), sought views on pre-project desirability and feasibility; socio-economic and ecological considerations; location of trial sites; planning, preparation and release stages; and post-release activities. The LUKT had initially identified five potential trial sites as worthy of further investigation. Of these, three (Cumbria, Thetford Forest and Kintyre Peninsula) were excluded after feedback from national stakeholders identified them as less preferred due to concerns including higher road density, a wider range and higher density of livestock species, and, in the case of the Kintyre Peninsula, added pressure on farmers with existing concerns that reintroduced sea eagles are predating lambs (White et al., 2016a).

After more detailed socio-ecological focussed work (including site size and connectivity, woodland cover/density, prey availability, human density and road networks and potential for economic development) on the remaining two sites, the Kielder Forest area, an extensive forest block that straddles the border between England and Scotland, was identified as the most suitable location for further investigation (White et al., 2016a). Consultation activities were conducted in Kielder

during August 2016 to April 2017 as a precursor to a project licence application being submitted to Natural England and Scottish Natural Heritage (by LUKT). The proposed reintroduction was presented as a time limited, five-year trial of a small number of individuals with the stated aim of establishing the information necessary to support a decision regarding full reintroduction.

#### **4. Methods**

A zoned approach to consultation work was adopted, comprising a primary and a secondary zone (Figure 1). The primary zone includes communities or individuals that are ‘most likely’ to be affected by the lynx reintroduction (i.e. within or close to possible release sites). The surrounding secondary zone comprises communities ‘less likely’ to be affected (i.e. bordering possible release areas).

##### *Primary zone*

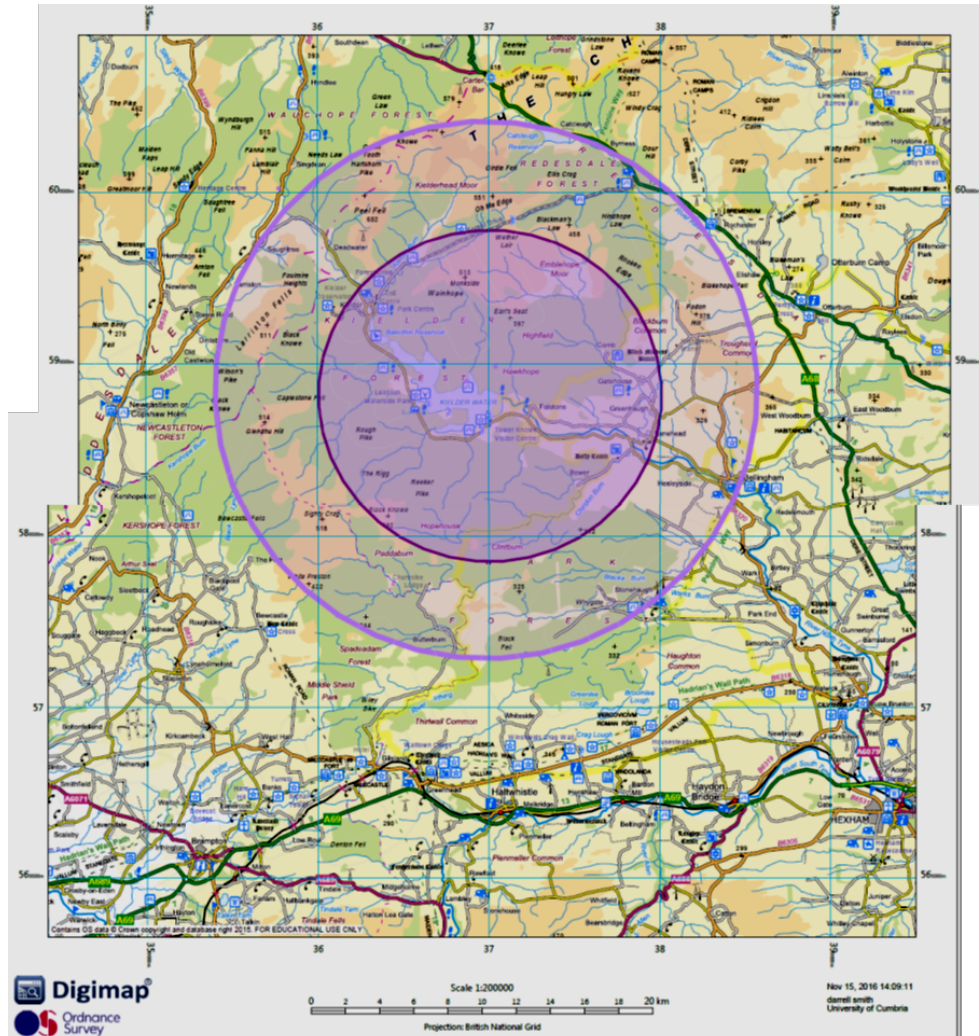
The primary zone covers an area of approximately 300km<sup>2</sup>, and was considered by LUKT to be the most likely area for a lynx release at the time the plan was prepared. In terms of human settlements this area incorporates:

1. Kielder village and surrounding farmsteads and isolated houses up to the Scottish border.
2. Falstone village and surrounding hamlets such as Stannersburn, down the North Tyne Valley to Lanehead and Greenhaugh and out to Dally Castle.

##### *Secondary zone*

The secondary zone covers an area of approximately 775km<sup>2</sup> and, given the consideration on lynx release above, may include (overlapping) territories of released lynx. In terms of human settlements this area incorporates the Redesdale Valley and the communities of Byrness, Cottonshopeburnfoot, Stonehaugh as well as adjacent larger settlements such as Newcastleton and Bellingham.





**Figure 1.** Zoned approach to community engagement, indicating primary inner zone (darker shading) and secondary zone (lighter shading).

#### **4.1 Parish council meetings**

The three Parish Councils in the primary zone were offered a presentation and discussion session at a Parish Council meeting (dates listed below). The aims of these meetings were to fully explain the project aims to councillors, record or address any initial concerns, to explain the consultation process, and build local contacts.

- Kielder Parish Council meeting (05/09/2016); ~15 attendees

- Falstone Parish Council meeting (01/11/2016); this was opened to the public by the PC and resulted in ~35 attendees
- Tarsset & Greystead Parish Council; we approached the PC but they declined our offer to attend a meeting

#### **4.2 Open public meetings**

We held open public meetings (listed below) in the main centres within the primary and secondary zones. The aims of these meetings were to fully explain the project aims, record or address any initial concerns, and to explain the consultation process. Meetings were advertised via posters in local public places and (where possible) in the local press and social media.

The majority of meetings included an ~1-hour presentation with slides (see Appendix II for examples of slide content) followed by a Q&A session with a panel including members from the project team. Notes from the Q&A sessions were taken (see Appendix III for a summary of note content). Additionally, recordings were made at the Kielder & Newcastleton meetings and are available on request. At the Tarsset & Greystead, Newcastleton and Langholm meetings, the audience were asked to complete questionnaires (see Appendix IV – community questionnaire) and this data is included in the ‘initial risks/benefits questionnaire’ section (page 12).

Primary zone:

- Kielder (11/08/2016); ~60-80 attendees (this initial meeting was a Q&A session only)
- Tarsset & Greystead (01/02/2017); ~50-60 attendees

Secondary zone:

- Newcastleton (30/12/2016); ~20-30 attendees
- Langholm (12/01/2016); ~20 attendees

#### **4.3 Drop-in sessions**

A drop-in session was held at the Anglers' Arms in Kielder village on 18 October 2016. It was attended by approximately 10 individuals from the local area, largely from the farming community. Here we had the opportunity for longer personal discussions of benefits and risks of the project. Due to limited resources and the need to prioritise more effective activities, further drop-in sessions were postponed.

#### **4.4 Door-to-door**

Door-to-door consultation (DDC) focussed on households within the primary zone, together with some closely neighbouring residential areas from the secondary zone, also visited. In addition, any further residents within the secondary zone requesting further information (via email or telephone contact) were also visited.

The aim of the DDC work was primarily to discuss the trial and respond to resident's questions and concerns. These meetings typically also included the completion of a 'risks and benefits' questionnaire and residents were given the option to be updated about the project if they so wished. When there was no answer at the doorstep, an information leaflet was left (Appendix V) along with contact details to request a visit or further information.

DDC within the primary zone occurred over an eight-month period (October 2016 to June 2017) and was completed by approximately 12 volunteers from the Lynx UK Trust, the University of Cumbria and/or AECOM. The aim was to contact all households within the primary zone, at the time of writing 75% of households within the primary zone had been contacted. This included:

- individual houses and farms between the border and Kielder village, and out to East Kielder
- Kielder and Falstone villages
- Houses and farms along both the north (Donkleywood) and south (Stannersburn to Greystead) of the North Tyne river
- Houses and farms along the Chirdon burn – Dally Castle to the Bower

- Houses and farms between and including Lanehead and Greenhaugh
- Houses and farms radiating out from Greenhaugh to Thorneyburn, Redhaugh and past The Comb up to Emblehope

DDC within the secondary zone included individual farms and estates such as:

- Whitchester
- Hesleyside estate
- Gibsheil
- Newcastleton

#### **4.5 *Farming community engagement***

As might be expected, there was a largely negative response from the farming community towards the trial. During the early stages of the local consultation the majority of farmers expressed their disapproval of the project by refusing to talk to team members at DDC visits or by voicing their anger at public meetings. Common themes expressed by farmers at public meetings included a lack of trust and transparency in the Lynx UK Trust, the potential for lynx to threaten their livelihoods and the need for a compensation scheme, the inability of farmers to control expanding lynx numbers and a sense of disempowerment that the reintroduction would be imposed on them regardless of their views.

To address these and other concerns and to establish a more constructive method of engagement, the project team established a farm focus group, to meet on a monthly basis. The intention was to build a farmer-led forum for constructive dialogue and to provide the opportunity for farmers to contribute to project management in the post-licensing period. Specific tasks identified included the evaluation of practical, site-specific management prescriptions to mitigate lynx predation on livestock and work with farming representatives and local auctioneers to design a retrospective compensation/conservation payments scheme.

At the time of writing, two preliminary, invitation-only focus group meetings had been held with the farming community to explore a range of issues and inform post-licence project management.

The first meeting was held on the 25 April 2017, however due to snow fall there was only one attendee from the farming community. A second meeting was held on 24 May 2017. Prior to this meeting, members of the project team visited contacts from the local farming community to extend an invitation and to provide them with information and key points that would aid discussion in the upcoming meeting. This meeting was attended by six members from the local farming community, three of whom were originally invited. The other three attendees had heard of the meeting via word of mouth (this was encouraging in many ways but also reduced the time for discussion as the team needed to provide background information). The director of Hexham Auction Mart also attended following invitation. Notes from both meetings are provided in Appendix VI.

The primary role of developing specific engagement with the farming community was to meet IUCN guideline requirements for a licence application. It is clearly important to view such engagement as continuous should the trial application be approved, and we would advise the LUKT to extend and broaden the engagement process to build trust, develop lines of communication and a sense of ownership of the project within the farming community. Persecution arguably constitutes the greatest risk to lynx in the post-licensing period and the most effective way of mitigating that risk will be to establish trust based relationships and effective communication with local farmers.

Our data reflected that hill farming formed an integral part of the culture, economy, landscape and overall sense of place in the Kielder area. Consequently, this theme was prevalent throughout the consultation process and was a talking point among almost all participants, regardless of their personal views regarding the proposed trial.

Furthermore, the risks listed on the risks/benefits questionnaire, as completed during the general DDC work, were predominately focused around risks to farming (Figure 2). This included comments related to 'risks to livestock' (including predation and worrying; for example, 'no guarantee that they won't attack sheep'), negative impacts on farmer livelihoods, risks that compensation will not be easily accessible and the impacts on farmer workloads due to compensation or mitigation measures.

#### **4.6 Business community engagement**

Local business forum meetings (see below) were attended in order to explain the aims of the project and to provide the opportunity for a more detailed discussion around the benefits and risks of the project to local businesses.

The following meetings were attended:

- Kielder Business Forum (31/10/2016); 12 attendees, this was formatted as a drop-in session following the regular forum meeting and no notes were taken.
- Bellingham Business Forum (07/11/2016); 16 attendees; attendees were asked to complete community questionnaires [these are included in the 'initial risks/benefits questionnaire' section (page 12)] and notes were taken which are provided in Appendix VII.

In addition, an invitation-only event with local tourism-related businesses was held on the 7<sup>th</sup> April 2017 at the Cheviot Hotel in Bellingham. The aim was to get feedback on project plans and begin discussions on working together to benefit the local tourism trade. Notes were taken and are provided in Appendix VII.

#### **4.7 Friends of the lynx**

A 'friends of the lynx' group was established for local residents who had expressed support for the trial. An initial meeting was held on the 8<sup>th</sup> April 2017, when a group of 15 supporters of the project met in Kielder forest for a group walk and an informal discussion about the project (conversations included lynx ecology, predation on livestock and possible benefits for tourism). The day concluded with a social event in

the local pub where we discussed how supporters could become more involved in the project and best voice their support. We would encourage the LUKT to develop such activities further should they be successful within their licence application.

#### ***4.8 Q methodological study***

Q methodology (QM) is a research tool designed to explore individual values, opinions and beliefs regarding a specific subject area. It is particularly useful in community engagement with smaller groups and has proven particularly useful in identifying 'common ground' in conflict management situations and in capturing interesting, informative and relevant viewpoints relative to the question (Watts and Stenner, 2012). In environmental/conservation research QM has been used in a wide range of contexts, including wind farm development, public opinion on shale gas, afforestation schemes, wildlife management and landscape restoration. QM typically involves a 60-90 minute interview where the participant ranks a set of statements relevant to the topic depending on how strongly they feel about each. All statements are derived from previous interviews, questionnaires and conversations, using the participants' own voices, concerning the topic to ensure that statements have relevance and authenticity. Factor analysis is then used to interrogate the data set.



## **5. Findings**

In this section we report on the initial risks and benefits questionnaire and offer some initial 'overview' analysis of the Q interviews completed. As indicated, our findings are tentative and preliminary, and we would urge the LUKT to continue with this consultation work.

### **5.1 Initial risks/benefits questionnaire**

The risks/benefits questionnaire was developed in order to provide a 'snapshot' of key community concerns and to feed into the development of the Q Methods data collection.

In total 130 people completed the questionnaire during either door-to-door activities or after a consultation meeting (Table 1). Table 2 provides summary demographic information for questionnaire participants alongside 2011 demographic data for the Bellingham ward (Northumbria County Council, 2011), which includes the Kielder, Tarsset and Greystead communities. The gender split for the sample is very similar to the ward average so we have focused on age cohort representativeness. In general, we have under-sampled younger people and over-sampled older people which has implications for the overall results. Our sample of 25-64 is close to the ward average (54.6% compared with 54.9%) but we have a high sample of 64+ (32% compared to 22.1% for the ward average).

In total, risks were listed 272 times while benefits were listed 179 times. Of the 84 people who listed benefits, 13 did not list any risks. Of the 115 people who listed risks, 44 did not list any benefits. In this section we have focused specifically on risks and benefits, though many respondents (56%) were able to see both benefits and risks.



**Table 1:** Questionnaire source

Questionnaire source	Number (n=130)
Door-to-door	86
Open meeting: Tarsset	5
Open meeting: Newcastleton	3
Open meeting: Langholm	7
Presentation: Borders Natural History Society	17
Presentation: Bellingham Business Forum	12

**Table 2:** Questionnaire demographics (including comparative demographics for Bellingham Ward)

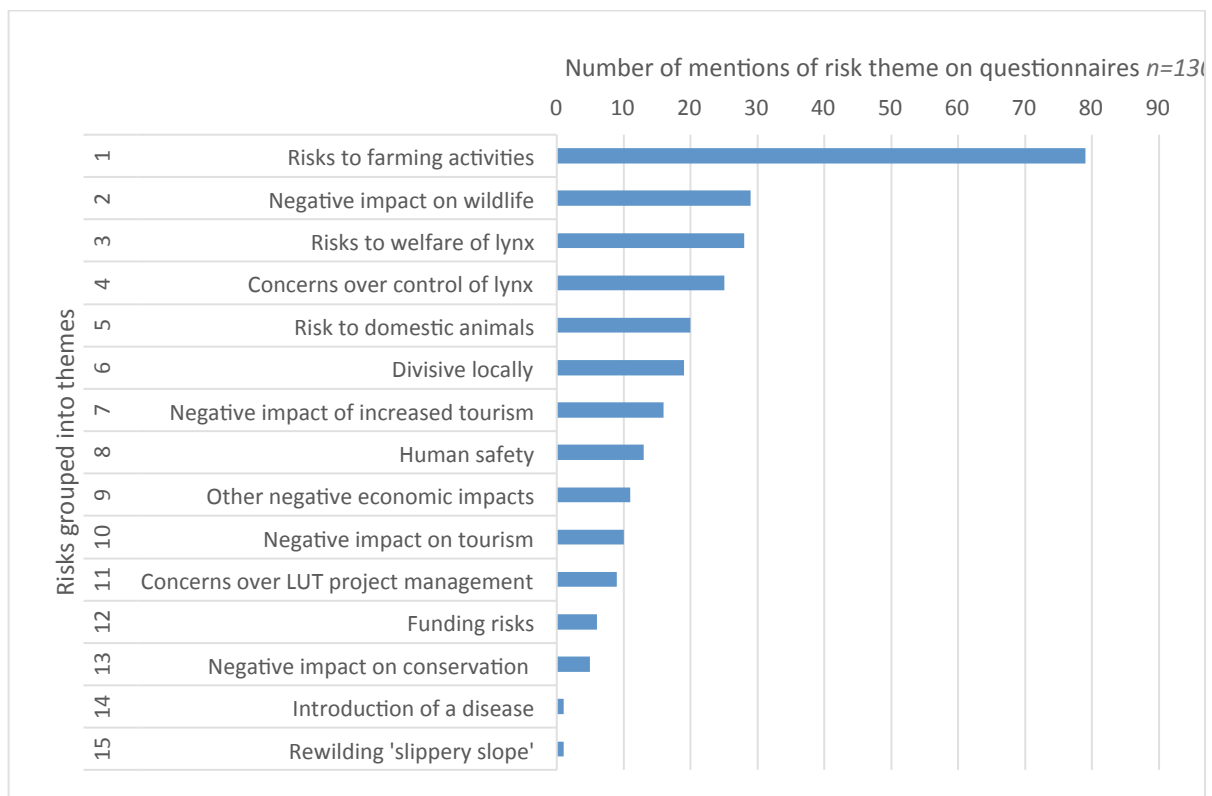
LUKT Kielder Sample				Bellingham Ward
Gender	Age group			Age group (%)
Male	67	Under 16	1 (0.8%)	14.9
Female	61	16-24	3 (2.3%)	8.1
Unstated	2	25-34	15 (11.5%)	8.3
		35-44	7 (5.4%)	12.3
		45-54	15 (11.5%)	17.8
		55-64	34 (26.2%)	16.5
		65+	42 (32%)	65+ 22.1
		Unstated	13 (10%)	

### 5.1.1 Risks

Concerns raised on questionnaires were predominately focused around the risks to farming (Figure 2), with many respondents mentioning *'risks to livestock'*, *'no guarantee that they won't attack sheep'* and *'alienating the farming community'*, and even when they were *'for it'* they could *'still see the point of view of farmers'*. There were also concerns regarding landscape change, with one respondent noting that *'we do not live in a Transylvanian forest or a theme park. People who choose to live, work and take holidays here do so because it is a quiet, domesticated, typically English landscape.'*

There were also concerns regarding the possible impact of lynx on the local wildlife, with red squirrels most frequently mentioned, along with the Kielder wild goat

population, ground-nesting birds and the recently reintroduced water voles. There are fears that lynx could cause the *‘downfall of indigenous rarities’* and comments also included concerns over *‘interfering with nature’*, such as *‘every time man interferes in ecosystems there are unexpected side effects and more times than no they are unwanted’*.



**Figure 2** Key risks raised on community questionnaires

There were comments regarding the welfare of the reintroduced lynx, with road traffic accidents, an *‘increase in illegal poisoning’* and the risk that farmers might *‘club together to shoot lynx’* raised as welfare concerns. There were also concerns over the fate of the lynx if the trial was unsuccessful, such as ending up in captivity.

Concerns were raised over lynx being *‘wild animals’* that are difficult to control and that it would be *‘hard to track the young’*, as well as over the expanding lynx

population becoming *'out of control'*; *'everything that gets introduced then has to be culled'*.

There were also concerns regarding possible lynx attacks on children and domestic pets; *'the safety of families living on remote farms, especially with babies or young families.'* Lynx will be *'a danger to dogs'*, and they may *'come into the village, eating pets, cats'*. Other people felt reassured by the information provided by LUKT, I was *'scared of walking with dogs at first, but I'm not worried about this anymore.'*

People thought that the case for tourism was overstated; *'possible jobs in the area, case not proven'* or that tourists would cause problems locally by *'clogging up the roads'*. The negative impact of tourists was frequently mentioned; *'increase in tourism not necessarily desirable [it could] adversely affect the environment and community'*. Simultaneously there were concerns that the reintroduction would *'scare tourists off'*.

Negative economic impacts not related to farming included impacts to the deer stalking industry, *'culling deer by shooting provides meat that is now being promoted as a healthy low-cholesterol option'*; and to forestry activities, due to *'added bureaucracy'*.

Concerns were raised over the *'divisive'* impact on the local community, with the project *'causing social divisions in the community'* (*'I've been criticised by locals for being positive'*), or within households (*'I'm for it but my wife is against'*). Among those who were more positive there was concern over *'misinformation'* causing *'fear without knowledge'* and there was a general sense that people were unable to make an informed decision due to a *'general lack of knowledge'*; *'ignorance is the main problem, we don't know anything about lynx.'*

Some concerns were raised regarding consultation activities, *'your consultation seems to have been seriously lacking'* and various aspects of the project plan (e.g. *'six [trial lynx] is a low number - what if they die soon, will the project be over before*

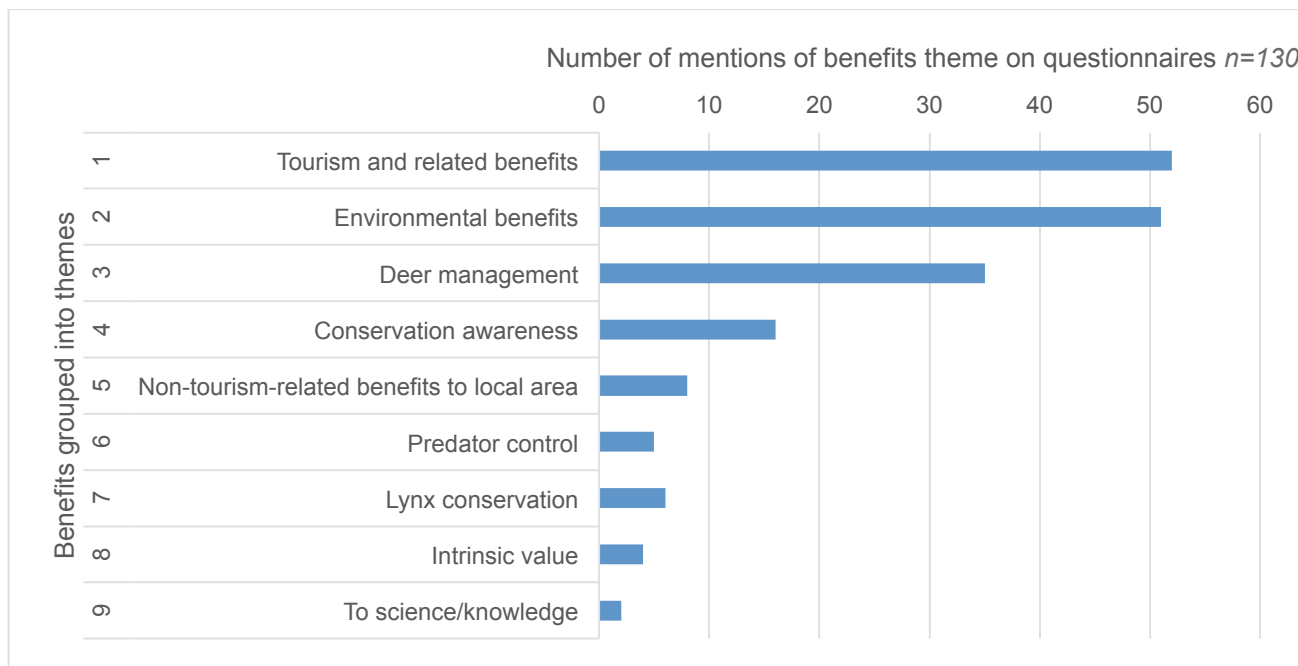
*it is started?*). There were also concerns over a lack of funding and ‘funding being eaten up by compensation payments’. Risks to the ‘*reputation of conservation in general*’ and the ‘*potential to prevent future reintroductions of lynx or other species*’ were also raised.

There were also concerns raised regarding the public meetings, for example, following the Tarsset public meeting one attendee commented that: ‘*I object to your patronising and high-handed methods in trying to force your project onto the community. I’m not confident that your consultation or research are impartial.*’ Similarly, another attendee stated that ‘*this proposal seems to be a product of fanatical lynx enthusiasts. It is being imposed on us.*’

This sense of the project being imposed from outside the community was mentioned regularly in interactions with householders in the local area, with comments such as ‘*this project seems to be from [organisations] who are not of this area*’ fairly commonplace. The LUKT has established a Friends of the Lynx group, and there is undoubtedly interest and support locally, but much more work is required if the community is to feel any sense of ownership or engagement with the project.

### **5.1.2 Benefits**

Benefits raised on questionnaires were predominately related to tourism and the environment, with respondents also mentioning the potential impacts on deer numbers (Figure 3).



**Figure 3** Key benefits raised on community questionnaires.

Comments relating to tourism recognised the potential to increase ‘*tourism and recreation income*’, ‘*the project will ‘bring in tourism, [it will be] great for the local economy*’, and also to ‘*put Kielder on the map as a destination*’ and ‘*raise profile of Kielder for ecotourism*’.

Environmental benefits largely focused on the ‘*overall benefit to the ecosystem*’ and the potential of lynx to act as ‘*an ecosystem engineer, improving the quality of native woodland*’, with the reintroduction being ‘*the first step in creating a functioning, diverse ecosystem!*’ There was also emphasis on returning a native species – ‘*it seems right to have them back where they belong*’, ‘*they have more of a right to be here than us*’ – and the potential ‘*to increase biodiversity, Kielder is a monoculture*’.

The fact that lynx are an ‘*apex predator [with] long term benefits [to the] predator/prey balance*’ and the potential to ‘*keep deer population under control*’, including ‘*reducing [the risk of] car accidents*’ was also prevalent. The potential to control numbers of other species, such as fox, was also mentioned. The ‘*possible benefits to conservation in general*’, included ‘*options to strengthen wildlife-related partnerships in Europe*’, as well as the potential of the project to ‘*re-inspire people*

*about nature* or *'inspire the next generation of naturalists'*. There were also benefits mentioned specific to lynx conservation, such as the potential to *'protect and increase the number of lynx'*.

The intrinsic value was also recognised, such as the *'cultural/spiritual effects of a rewilded landscape'* and *'creating the sense of the wild'*. Not all those who were positive felt the need to list benefits; *'it's just a nice thing to do, I'm not bothered if there are any benefits.'*

## **5.2. Q methods**

A Q set (Appendix VIII) was developed using statements from data collected during national and local consultation activities, including the online public survey, notes and recordings from local consultation meetings, and questionnaires. At the time of writing 15 Q interviews have been conducted with residents in the primary zone. The participants were presented with the research question *'what do you think about the Lynx trial reintroduction proposal in Kielder?'* and were then asked to undertake sorting exercises, resulting in the Q statements becoming arranged on a grid representing a preference scale (from statements they mostly disagree with to statements they mostly agree with).

It is recommended that a Q study includes approximately 40 to 60 participants (Watts and Stenner, 2005, 2012), and as only 15 interviews were completed, it would be inappropriate to conduct a full factor analysis on the data set. However, an initial examination of the 15 sorts does result in some initial findings worth mentioning. There is, for example, strong disagreement across the participant group to the statement *'I am concerned that the lynx will be a threat to people during the trial'*, with 9 participants strongly disagreeing with it (-4 or -5). However, two participants strongly agreed with the statement (+4 or +5), so while the participants, including those for or against the trial, generally accept the evidence that lynx are not a threat to humans, there is still some reluctance within the community. There is opposing opinions over whether lynx will threaten pets, with three participants strongly

agreeing with, and three strongly disagreeing with the statement *'I am concerned that lynx will be a threat to pets during the trial'*. There was also concern indicated for native wildlife, as in the community questionnaires, with three strongly agreeing with the statement *'I am concerned that the lynx will pose a threat to our native wildlife during the trial'*, while only one strongly disagreed with the statement.

Seven participants disagreed strongly that *'the trial would have negative impacts on my personal situation'*, with no participants agreeing strongly with the statement. This indicates little concern from individuals over the impact of the trial on their own lives. Concern is directed to the impact on others, particularly farmers. Six participants strongly agree that *'it is important that adequate compensation agreements are in place, should the lynx cause any destruction'*, four strongly agree that *'I am concerned that lynx will be a threat to livestock during the trial'* and four strongly agree that *'I am concerned that the lynx will cause economic suffering to farmers and/or countryside managers'* (one participant strongly disagrees with this statement).

There was strong disagreement (n=6) and no strong agreement to the statement *'I do not think this area is suitable for the lynx'*, indicating that people feel the habitat in the Kielder area may be suitable. This contradicts some concerns raised in the questionnaires about plantation forests being unsuitable habitat for lynx. However, at a larger scale, there was direct conflict over the statement *'the British countryside is no longer a suitable place for a sustainable lynx population'*, with two participants strongly agreeing, and two strongly disagreeing with the statement, as well as the statement *'Lynx are not compatible with our society today'*, with three participants strongly disagreeing with and two strongly agreeing with the statement.

Agreement was contradictory on several other statements with two to four participants indicating both strong agreement and disagreement; *'Lynx should be introduced to the UK and any uncertainties can and must be dealt with'*, *'We have an obligation to try and restore our natural ecosystem as much as possible. The trial is*

one step towards that', *'I am concerned that the lynx will disperse from the trial release area'*, and *'Lynx could beneficially add to the rural economy through eco-tourism'*.

Results indicate that concerns for the welfare of the lynx is high, which coincides with the data collected on the community questionnaires. Six participants strongly agreed that *'the welfare and safety of the lynx is of highest importance, both during the trial and at the end of the trial'*. Only one participant strongly disagreed with the statement. Importance was also placed on having *'a well-defined exit program in place, which guarantees reversibility'* and the *'use of biological data and sound science in this trial of introducing lynx'*, with six and five participants strongly agreeing respectively and no participants strongly disagreeing. There was strong agreement for the statement *'all aspects of the trial must be transparent and open for all'* from three participants, with no strong disagreement.

During Q sorts there was strong agreements for the statements *'it is important that adequate compensation agreements are in place, should the lynx cause any destruction'*, *'I am concerned that lynx will be a threat to livestock during the trial'* and *'I am concerned that the lynx will cause economic suffering to farmers and/or countryside managers'* (one participant strongly disagreed with this statement). This indicates that even supporters of the proposal see the need for engaging with the farming community and mitigating possible negative impacts on farming practices. This view is also reflected on the risks/benefits questionnaire this is also reflected, with many 'supportive respondents' still able to 'see the point of view of farmers'. Accompanying Q interviews, however, indicated a range of views towards farmers, and it is worth noting that none of the 15 participants were directly involved in farming activities. Some individuals were very supportive of farmers and made efforts to justify their concerns:



*‘There’s a feeling that comes across from the Lynx Trust about thinking that farmers don’t care about their natural environment... or about their sheep but they do passionately’ (Q participant 8; primary zone)*

*‘The big concern is that people, if their livestock is a target, that there will be compensation. People don’t want to be seen as money-grabbing farmers that just want the money. It’s not about that. It is a livelihood and it is something that could go wrong’ (Q participant 12, primary zone)*

*‘A lot of the farmers in this area are very much on the edge of being able to earn a living, in the first place. Quite a lot of them are tenants, and not landowners themselves... They’ve got very little possibility of buying somewhere if they retire, if they ever retire. They tend to be quite an elderly population, farming well into their 70s and what they get at market for a lamb just about covers the cost.’ (Q participant 6, primary zone)*

Others showed displeasure over how dominant farming is in the area, particularly in decision-making:

*‘The only thing that really concerns me is the intransigence of the NFU [National Farmers’ Union]... They just think “right we’re not talking to you” rather than that we can come to some kind of arrangement where if it does go ahead we can continue the conversation. Farmers I’ve spoken to and asked whether this is a money issue and they’ve said “no because we love our animals so much that we just can’t bare them being eaten or even taken”. They’re farming because they want money so at the end of the day it is about money... I am concerned there is a no-go area which is why should we reintroduce anything that’s going to harm their animals.’ (Q participant 1, primary zone)*

*‘The 40 farmers who live in this area are a minority... they got £3.6 million in subsidies last year.’ (Q participant 9, primary zone)*

However, even those who were less supportive of farmers saw the value in compensation as a method for protecting the welfare of the lynx:

*‘The major industry around here is... hill farming, and they’re certainly going to need to be persuaded that if they make any losses then they will be compensated, otherwise... people are just going to shoot [the lynx]’ (Q participant 4, primary zone)*

*‘I don’t think it’s that important for farmers, but I care about the welfare of the lynx. And without adequate compensation agreements in place the farmers are just going to shoot them aren’t they, or poison them. That’s the way they think... I don’t like to see farmers compensated because they get enough elsewhere. And they will just scam it... I’m surprised that they don’t see it that way... that it’s another cash cow for them.’ (Q participant 9, primary zone)*

Several other participants raised concern over the possibility of corruption around compensation claims or issues with management and enforcement of a compensation scheme:

*‘Who’s going to calculate whether a lamb that is three weeks old is going to be a prize-winning tup? The farmer will have some idea but whether that will hold any weight... we’re looking at over £1000 or more for a prize-winning tup against a lamb which is £30/£40. I think it’s an absolute nightmare of how on earth it’s ever going to be sorted. How do you calculate and compensate for potential?’ (Q participant 6, primary zone)*

## 6. Discussion

This report is based on consultation in and around the Kielder area from August 2016 to May 2017. The consultation activities reported on in this document are based on public meetings, door to door discussions, a risks/benefit questionnaire, focus group meetings and a 'pilot' Q exercise undertaken during this period. As the planned consultation activities are incomplete, the findings in this report are tentative, but they nevertheless point towards a reasonably divided community, with most residents still undecided or unsure and a small minority either firmly supporting or opposing the project. We would suggest that any further consultation work in the area should focus on:

- extended engagement with regional and local conservation infrastructure
- extended engagement with all socio-economic groups that make up members of the local community
- engagement around problem solving specifically in relation to mitigation measures to prevent livestock predation, monitoring protocols, compensation, measures of success and exit strategies
- locally focussed work on the stated economic benefits
- engendering wider participation to reduce conflict and support success through genuine co-development of policy and protocols.

Many of the views presented in this report mirror responses to elements of both the initial national public survey (Smith *et al.* 2015) and the national stakeholders survey (Smith *et al.* 2016). The IUCN reintroduction and translocation guidelines clearly indicate the need for social/community support. Annex IX maps the consultation activities reported here against IUCN guidelines and provides recommendations for further work. In brief, strong opinions, both for and against, were expressed by members of the Kielder community, emphasising an emotional component to the decision making process. This was particularly the case in relation to individuals, organisations and businesses who either represent the farming sector or whose

livelihoods are dependent upon farming. Some members of the local community felt 'uninformed' and unable to take a fully reasoned position concerning the trial. There was also interest, albeit tentative, in the potential for nature-based' economic growth, particularly in relation to tourism and the development of 'wild experiences'. Such conversations represent a work in progress and will need to be continued. Further consultation work is also required with the farming community, particularly in relation to key project areas such as compensation, measures of success and exit strategies.

Identifying and understanding the structure of a community to work with is challenging and, as Berkes (2004) indicates, community-based conservation 'failure' may be due to the implementation rather than any weakness or impracticality of the concept. Clear devolution of authority and responsibility (Songorwa, 1999; Murphree, 2002) is vital alongside identifying the scale appropriate (Berkes, 2004) in a multi-stakeholder environment. As indicated in the introductory section, community support is fundamentally important to this project and it is essential that the local community are given the necessary information and support to enable them to make an informed decision regarding the desirability of the trial. Such an approach takes time, commitment and honesty, and is often messy and complex, but ultimately necessary for conservation success.

## References

Berkes, F. (2004) 'Rethinking community-based conservation', *Conservation Biology*, vol. 18, no., 3, pp621-630

Breitenmoser, U. and Breitenmoser-Würsten, C. (2004) 'Switzerland', in M. von Arx, C. Breitenmoser-Würsten, F. Zimmermann and U. Breitenmoser (eds) *Status and conservation of the Eurasian lynx (Lynx lynx) in Europe in 2001*, Kora, Muri

Kaczensky, P., Chapron, G., von Arx, M., Huber, D., Andren, H. and Linnell, J. (2012) 'Status, management and distribution of large carnivores - bears, lynx, wolf & wolverine - in Europe'  
[http://ec.europa.eu/environment/nature/conservation/species/carnivores/conservation\\_status.htm](http://ec.europa.eu/environment/nature/conservation/species/carnivores/conservation_status.htm), accessed 10 November 2017

Murphree, M.W. (2002) 'Protected areas and the commons', *Common Property Resource Digest*, vol. 60., pp1-3

Northumberland County Council (2011).  
<http://www.northumberland.gov.uk/NorthumberlandCountyCouncil/media/Northumberland-Knowledge/NK%20place/Parishes%20and%20towns/Parish%20fact%20sheets/FactSheetParishBellingham.pdf>

Schmidt-Posthaus, H., Breitenmoser-Würsten, C., Posthaus, H., Bacciarini, L. and Breitenmoser, U. (2002) 'Causes of mortality in reintroduced Eurasian lynx in Switzerland', *Journal of Wildlife Diseases*, vol. 38, no. 1, pp84-92

Smith, D.J., O'Donoghue, P., Convery, I., Eagle, A., & Piper, S. (2015). Reintroduction of the Eurasian lynx to the United Kingdom: Results of a public survey.

<http://www lynxuk.org/publications/lynxinterimsurvey.pdf>

Smith, D.J., O'Donoghue, P., Convery, I., Eagle, A., Piper, S. & White, C. (2016). Lynx UK Trust A National Stakeholder Consultation: An interim consultation document.

<http://www lynxuk.org/publications/lynxinterimsurvey.pdf>

Songorwa, A.N. (1999) 'Community-Based Wildlife Management (CWM) in Tanzania: Are the Communities Interested?', *World Development*, vol. 27, no. 12, pp2061-2079

Thirgood, S. and Redpath, S. (2008) 'Hen harriers and red grouse: Science, politics and human-wildlife conflict', *Journal of Applied Ecology*, vol. 45, no. 5, pp1550-1554

Wilson, C.J. (2004) 'Could we live with reintroduced large carnivores in the UK?', *Mammal Review*, vol. 34, no. 3, pp211-232

Watts, S. and Stenner, P. (2005) 'Doing Q methodology: Theory, method and interpretation', *Qualitative Research in Psychology*, vol. 2, no. 1, pp67-91

Watts, S. and Stenner, P. (2012) *Doing Q Methodological Research: Theory method and interpretation*, Sage Publications, London

## Appendices

### Appendix I: Detailed Local Consultation Plan progress (updated)

Items in green are new activities added to the original plan.

#### Primary zone engagement plan:

Stakeholder	Engagement plan	Purpose	Status	Data/material collected
Parish Councils	Attend Kielder PC meeting/s	Fully explain the project aims to councillors and record/address any initial concerns Explain consultation process Community liaison - use of local knowledge for focal areas and groups to approach for further discussions Future event/meeting publicity Use contact through PC for resident sample Q methods Regular updates via parish/community newsletters	Completed 05/09/16 Kielder PC (~15 attendees)	
	Attend Falstone PC meeting/s	As above	Completed 01/11/16 Falstone PC (ended up as public open meeting with ~35 attendees, a large contingent from the farming community)	
	Attend Tarsset & Greystead PC meeting/s	As above	PC declined, an open public meeting was held instead (see below)	N/A
Electoral wards	Meeting with MP – Guy Opperman	Fully explain the project aims Explain consultation process	11/01/17 Phone call conversation between GO and DB and AE	Notes
	Consult with MEP Paul Brannen	Fully explain the project aims Explain consultation process		
Local residents: Open public meetings	Kielder	Fully explain the project aims and record/address any initial concerns Explain consultation process	Completed 11 August 2016	Recording
	Falstone	As above	Completed 01/11/16	Notes
	Tarsset & Greystead	As above	Completed	Notes
Local residents: door-to-door	Door to door verbal consultations with households which fall within the identified area	Provide information and opportunity for the Trust to 'get to know the community' Complete an exploratory questionnaire to highlight key areas of concern/issues (Appendix II). inform Q Methods statements and Trust information materials	~75% of households visited	Questionnaires
Local	Visit Kielder	Opportunity for school pupils to	18/10/16 Kielder First	

residents: school visits	First School	learn about lynx and to develop a relationship with the Trust (to be managed by qualified teacher)	School. Presentation (1.5 hours) to 15 children and several staff members. Second visit following positive feedback from the school where the children were taken into the forest for tracking and radio collaring tutorial.	
	Visit Greenhaugh First School	As above.	18/10/16 Greenhaugh First School. Arranged and then cancelled by school due to concerns from farming community.	
	Visit Bellingham Middle School	As above	Nov 2016 school approached.	
Local residents: drop-in events	Anglers Arms, Kielder	Opportunity for longer personal discussions of benefits and risks of project.	18/10/16 Anglers Arms, Kielder. Attended by 10 people, mainly farming community.	
	Further drop-in events	As above	Postponed	
Local residents: other activities	Community shows/events	Opportunity for longer personal discussions of benefits and risks of project.	Postponed	
	Complete Q Methodology exercise	Analysis of community understanding of project benefits and risks	Q sort developed, initial interviews undertaken but further required for analysis	Q sort forms
	Open feedback/validation meeting	Provide community with a summary of findings from the questionnaire (Appendix I) and Q methods work (Appendix III), respond to concerns/issues	Postponed	
Business Community	Attend Kielder business forum	Fully explain the project aims Opportunity for longer discussions of benefits and risks of project.	Completed 31/10/16 Kielder Business Forum. Drop in session after main meeting	None
	Attend Bellingham business forum	Fully explain the project aims Opportunity for longer discussions of benefits and risks of project.	Completed 07/11/16 Bellingham Business Forum. Presentation and discussion (2.5 hours) to 16 attendees	Notes and questionnaires
	Approach local businesses individually – visits and phone calls	Opportunity for longer discussions of benefits and risks of project, particularly the impact of increased visitor numbers and spend.	The Bike Place Falstone Barns The Anglers Arms Albion Outdoors Kielder Observatory Hawkthirst Scout Camp Hesleyside Hall and Huts (including Hesleyside Estate) Wild Northumbrian Tarsset Tor	



			And ongoing	
	Tourism business focus group	Opportunity for longer discussions of benefits and risks of project, particularly the impact of increased visitor numbers and spend. There has been an increase in nature-focused projects in the Kielder area, such as the osprey and water vole, which the lynx project has the opportunity to sit alongside in attracting ecotourism visitors particularly.	Held 07/04/17	Meeting notes
Farming community	Meet with local NFU representative	Fully explain the project aims to representative and record/address any initial concerns Explain consultation process Community representation – a communication point for farmers	Requested but no response received as yet	
	Sheep Farmer Visits – door to door, in area identified	Fully explain the project aims and record/address any initial concerns Explain consultation process and on going communication Explain focus group representation	Several visits have been made to farms in the primary zone	
	Farmer focus group	Regular farmer-led meetings to provide a forum for detailed discussion and start the process of building trust based relationships. To identify and evaluate practical site specific management prescriptions to mitigate lynx predation on livestock and to work with farming representatives and local auctioneers to design a compensation/conservation payments scheme.	Two meetings have been held on 25/04/17 (1 attendee) and 24/05/17 (7 attendees)	Recording s and meeting notes
Forestry-related stakeholders	Forestry and ecology focus group	Fully explain the project aims, and focus on ecological benefits/risks, opportunity for detailed discussions with those with local knowledge and an opportunity for them to input on the project plan.	Local stakeholders identified and some contact made, meeting to be organised	
Other stakeholders	Provide talk at Border Natural History Society	Fully explain the project aims, and focus on ecological benefits/risks, opportunity for detailed discussions with local natural historians	07/12/16	Questionnaires
Representatives from all local stakeholder groups	Establish local advisory group	To work with the Trust on a range of project protocols, including livestock mortality compensation scheme, monitoring and evaluation, measures of success, exit strategy.	Conversation with interested individuals have started.	

## Secondary Zone engagement plan:

Stakeholder	Engagement plan	Purpose	Status	Data
Local residents and Community Councils in Scotland	Local public consultation meeting: Newcastleton	Fully explain the project aims Explain consultation process Offer a clear line of communication	30/12/16	Meeting notes and questionnaire
	Local public consultation meeting: Langholm	As above	12/01/2016	Meeting notes and questionnaires
	Local public consultation meeting: Ettrick	Fully explain the project aims Explain consultation process Offer a clear line of communication	Postponed	
Local residents	Local and regional press and newsletter coverage	General information about the project Updates of progress and activity	Throughout consultation: Examples Hexam Courant: <a href="http://www.hexham-courant.co.uk/features/Debate-continues-over-plan-to-release-lynx-at-Kielder-26f9ef29-431e-4906-94b6-1d7a15a0de7e-ds">http://www.hexham-courant.co.uk/features/Debate-continues-over-plan-to-release-lynx-at-Kielder-26f9ef29-431e-4906-94b6-1d7a15a0de7e-ds</a> <a href="http://www.hexham-courant.co.uk/news/Residents-question-lynx-proposal-73aaa858-9dab-4b32-ac83-f431da27be05-ds">http://www.hexham-courant.co.uk/news/Residents-question-lynx-proposal-73aaa858-9dab-4b32-ac83-f431da27be05-ds</a> <a href="http://www.hexham-courant.co.uk/features/Will-lynx-restore-the-natural-order-256c0c79-4bea-44a3-bb71-1196d56e2704-ds">http://www.hexham-courant.co.uk/features/Will-lynx-restore-the-natural-order-256c0c79-4bea-44a3-bb71-1196d56e2704-ds</a>  Eskdale and Liddesdale Advertiser: <a href="http://www.eladvertiser.co.uk/news/Lynx-release-proposals-to-be-unveiled-9c33c7d5-adb3-4de8-825a-88e28f1000f3-ds">http://www.eladvertiser.co.uk/news/Lynx-release-proposals-to-be-unveiled-9c33c7d5-adb3-4de8-825a-88e28f1000f3-ds</a> <a href="http://www.eladvertiser.co.uk/news/Public-asked-for-views-on-reintroducing-lynx-3667a232-b951-461d-ac49-2438bc82d95b-ds">http://www.eladvertiser.co.uk/news/Public-asked-for-views-on-reintroducing-lynx-3667a232-b951-461d-ac49-2438bc82d95b-ds</a>	
Local residents, businesses and visitors	Trifold leaflet left in prominent local locations – visitor centres, cafes, etc	Fully explain the project aims Explain consultation process Offer a clear line of communication	Postponed	
Farming	Farmers within	As above	Postponed	

community	the identified area will receive the trifold leaflet and covering letter			
	smaller local discussion groups, on request	Small scale discussion group meetings in response to requests from farmers	No requests; some farmers from wider area were included in the farmer focus group meetings in the primary zone (see above).	
Business Community	Trifold leaflet to businesses within identified area	Personal visits with leaflets to be left for distribution to patrons	Some leaflets distributed	
Broader local stakeholder meetings	Kielder Water and Forest Park Development Trust board meeting	Fully explain the project aims Explain consultation process Offer a clear line of communication	Attended board meeting 07/12/16	
	Northumberland Wildlife Trust	As above	Meeting 18/10/16	
	Northumberland National Park Authority	As above	In communication with park staff to arrange a meeting	
	Forestry Commission	As above	Meeting 17/10/16	
	Local forestry companies	As above	Dec/Jan 2016	
	Identify other interest groups such as cyclists, fishing, walkers	As above	Postponed	
Supportive individuals and local groups	A walk in the forest to inform about the ecology of lynx, followed by meeting in pub to discuss the wider project and future involvement	To provide a voice and route of involvement for those very supportive of the plans	Completed 08.04.17	Notes

## Appendix II: Example of slide show presentation

**AECOM** University of Cumbria 

### Reintroducing the Eurasian lynx (*Lynx lynx*) UK: Farming Panel

DEBORAH BRADY, MIC MAYHEW

#### What will this involve?

A time limited trial reintroduction of lynx in order to observe, measure and analyse the effects of lynx on various aspects of the UK's natural, social & economic environments.

This will enable SNH, NE and respective Governments to make an evidence-based decision regarding the longer-term desirability of lynx in the UK

#### Involvement

Are there areas that you'd like to get involved with that interest you/ benefit you?

I'd like to sign up at the start as a lynx friendly business

We'd be interested in putting some monitors on the sheep

I've got a holiday cottage on the farm that we rent out

Can you measure what the sheep do if the lynx come near?

The Lynx UK Trust is seeking the necessary licence(s) to conduct a highly regulated 6 year scientific trial studying the effects of Eurasian lynx on selected sites in Scotland and/or England



#### Provisional Timeline

March 2016 - April 2016 national public survey

May 2016 - June 2016 selection of five potential sites for the trial reintroduction

July 2016 - October 2016 Initial CBA analysis of a reintroduction at each of the five sites to identify the possible impacts on rural economies

2017 - detailed assessment of impacts on the local area and economy: habitat quality, ecosystems, food availability, forestry operations, sheep farming, visitors

#### Compensation: Multiple Approaches

<b>Ex Post Compensation</b> Reimbursement to the farmer to offset the losses incurred by lynx preying on livestock.	<b>Conservation Performance Payments</b> Monetary payments made to farmers that are contingent on conservation outcomes and not livestock losses.	<b>Management Schemes</b> Payments to land managers who undertake work to prevent lynx from preying on livestock. E.g. Sheep Management Scheme on Mait.
--	--	--

The Lynx UK Trust is seeking the necessary licence(s) to conduct a highly regulated 6 year scientific trial studying the effects of Eurasian lynx on selected sites in Scotland and/or England

The Trust has asked for support from:

- AECOM - team of economists & ecologists develop research for the 'evidence base'
- Clifford Chance LLP - legal guidance and project management expertise.
- University of Cumbria - expertise on stakeholder consultation & forestry/conservation issues.



#### Predation on livestock? Harz

- Compensation at market price - €100-150/animal. Total annual compensation for loss of livestock (including both sheep and other livestock) recorded as:
  - 2011 €1,016 (£819)
  - 2012 €938 (£756)
  - 2013 €796 (£642)
  - 2014 €670 (£540)
- Total compensation from 2000 - 2014 amounted to €15,452 (£12,454) or a yearly average of €1,104 (£890).

#### Verification/Valuation of Livestock Losses

- 1. Verification**  
Telemetry, field signs, DNA analysis.
- 2. Valuation**  
Independent auctioneer or AHOB market valuation  
Lethal and non-lethal impacts → market value plus a percentage
- 3. Compensation**  
Rapid turnaround time

### Value of Sheep in Study Area

- Questionnaire sent to 150 farms in study area
- A total of 66,000 sheep recorded (80% breeding ewes, fat lambs, and store lambs; 17% glossens and replacements, 3% rams and specialist ewes)
- Range of values from pedigree rams (£2400) to store lambs (£25)

Category	Number of sheep	Percentage	Average value (£)	Average value of flock (£)
Rams	10	0.015	2400	24000
Specialist ewes	10	0.015	2400	24000
Breeding ewes	53,000	80.15	100	5,300,000
Store lambs	12,000	17.84	25	300,000
Glossens	1,000	1.51	100	100,000
Replacements	1,000	1.51	100	100,000
Total	66,000	100	100	5,740,000

### What will this involve?

A time limited trial reintroduction of lynx in order to observe, measure and analyse the effects of lynx on various aspects of the UK's natural, social & economic environments.

This will enable SNH, NE and respective Governments to make an evidence-based decision regarding the longer-term desirability of lynx in the UK



### Lynx Management

*"The Lynx itself would find itself a target from the agricultural sector because of its unacceptable impact on livestock and their insufficient resources to protect it and insufficient funds to compensate for damage/losses"*

*As a sheep breeder I have huge concerns about the project. I am concerned because my farm & fields are surrounded by forestry. Sheep often lie up among or by the trees at night. Lynx will take lambs. This inflicts a financial burden on hard pressed farmers and unnecessary suffering on the lamb. European farmers lose lambs to Lynx so will British farmers. You also run the risk that occasionally humans, dogs & cats will come into contact with the Lynx and be injured.*

*Whilst the proposal shows the anticipated costs of lynx eradication, it does not factor in the costs that farmers will have to take to protect their livestock, e.g. fences, dogs, herders, etc., all of which can be extremely expensive.*

### Provisional Timeline

**March 2016 - April 2016** national public survey

**May 2016 - June 2016** selection of five potential sites for the trial reintroduction

**July 2016 - October 2016** initial CBA analysis of a reintroduction at each of the five sites to identify the possible impacts on rural economies

**2017** - detailed assessment of impacts on the local area and economy: habitat quality, ecosystems, food availability, forestry operations, sheep farming, visitors



### Lynx Management

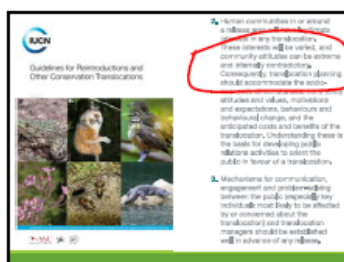
Range of options available to prevent 'lynx problems' and/or manage problems these include:

fencing, guard animals, shared location data, adverse conditioning (making lynx scared of humans/human areas)

In practice we will use a targeted approaches to fit context/location

Likely impact of lynx on livestock based on biology & experiences elsewhere, e.g. Norway, Hartz, Jura


Exit strategy, thresholds/absolute [DO WE WANT TO SPECIFY NUMBERS OF SHEEP? ABSOLUTE 'RED LINES' ATTACK ON HUMANS?]





Category	Redesdale	Redesdale	Redesdale	Redesdale	Redesdale
Area (km <sup>2</sup> )	1,000	1,000	1,000	1,000	1,000
Population	1,000	1,000	1,000	1,000	1,000
Area (km <sup>2</sup> )	1,000	1,000	1,000	1,000	1,000
Population	1,000	1,000	1,000	1,000	1,000
Area (km <sup>2</sup> )	1,000	1,000	1,000	1,000	1,000
Population	1,000	1,000	1,000	1,000	1,000

## Local Consultation Process



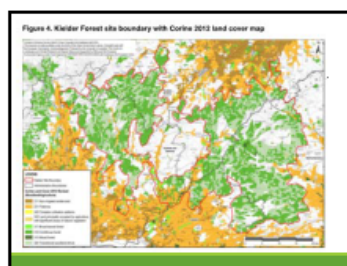
### Primary zone:

- Initial Parish Council/community meeting
- Drop in sessions in local centres (e.g. pubs, cafes, libraries)
- Door to door communication and initial questionnaire
- Farming community engagement
- Business community engagement
- Q methods exercise
- Validation/feedback community event
- Establishment of a local advisory group, to include appropriate channels for ongoing consultation with community



Category	Redesdale	Redesdale
Area (km <sup>2</sup> )	1,000	1,000
Population	1,000	1,000
Area (km <sup>2</sup> )	1,000	1,000
Population	1,000	1,000
Area (km <sup>2</sup> )	1,000	1,000
Population	1,000	1,000

Re wider forest network: Kielder Forest part of a 5,800 km<sup>2</sup> Southern Uplands habitat network which is estimated to be able to support between 50 – 100<sup>+</sup> lynx


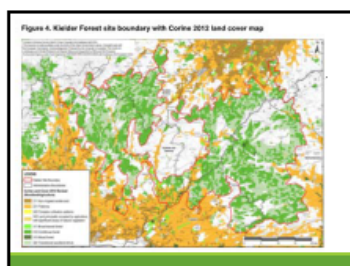


### Secondary zone:

Covers an area of approximately 775km<sup>2</sup> and may include (overlapping) territories of released lynx.

Area incorporates the Redesdale Valley and communities of Bymess, Cottonhopeburnfoot, Stonehaugh as well as adjacent larger settlements such as Newcastle and Bellingham.

If a population self-identifies as being a relevant stakeholder then engagement can be increased to meet such need.





### Primary zone:

Those areas likely to be most affected, either directly or indirectly, by the presence of lynx. There is currently one primary zone identified, which covers an area of approximately 300km<sup>2</sup> and this will include the release sites for all project lynx. In terms of human settlement:

Kielder village, surrounding farmsteads & isolated houses up to Scottish border.

Falstone village, surrounding hamlets (e.g. Stannersburn & the roads down to Greystead & Donkeywood Lanehead area).



### Secondary zone:

- Initial Parish Council/community meeting
- Provision of project information (leaflets, reports, etc.)
- Follow up individual and community meetings where relevant requested
- Opportunity to remain involved with the project via advisory group, project website, twitter feeds, etc.



## Appendix III: Summary notes from Q&A session

### Kielder Consultation Meeting – 11<sup>th</sup> August 2016

Chair: Steven Webb (SW) – Kielder Parish Councillor

Panel: Paul O'Donoghue (PO), Darrell Smith (DS)

LR: Local resident

Notes extracted from recording, not verbatim (full recording available on request)

1	SW	<b>Neutral role of the parish council, more information available on the LUT website <a href="http://lynxuk.org">lynxuk.org</a></b>
2	PO	Emphasised he would be providing factual information – no threat to human beings, low sheep predation rates, lynx behaviour and physiology, previous national consultation activities
3	LR	Why are you doing this?
	PO	Rural regeneration, CBA completed by AECOM, Herz example
	LR	We don't want any more tourists
	PO	It's about carefully managed, sensitive tourism. Kielder has more capacity for tourism – there are currently vacancies in the middle of summer.
	Many	Disagreement with PO that Newcastleton is considered part of Kielder. Forestry in Scotland is devolved to Edinburgh.
	PO	It's the same forest.
4	LR	This is a stupid idea from start to finish. Raises example of Flaviu.
	PO	Are you a sheep farmer?
	LR	Yes
	PO	Not everyone is a sheep farmer here. Explains different behaviour of lynx reared in captivity vs. naturally reared
5	LR	If lynx were released here they would be shot.
	PO	Reiterates sheep predation rates across Europe.
	Many	Negative response
6	LR	Do lynx climb trees?
	PO	Rarely, but they can.
	LR	Would ospreys be killed by lynx?
	PO	They aren't in Europe.
7	LR	Europe predation rates – we've spoken to people in Sweden and Norway who have problem with lynx coming into farm buildings, and predation rates are much higher.
	PO	Predation rates in Norway are higher due to different farming practices. Average across Europe.

	<b>LR</b>	We're not concerned with averages, we're talking about individual farmers.
	<b>PO</b>	Understands that. The average in Norway is 10 sheep per lynx per year.
	<b>Many</b>	Why didn't you say that from the beginning?
<b>8</b>	<b>NSA member</b>	Being disingenuous with your facts. You said that there was a stakeholder meeting in the Lake District and that the NSA was involved in choosing Kielder as the release site, that is not the result of the stakeholders in that meeting and the NSA was not involved.
	<b>PO</b>	What I said was the NSA and NFU were there and then I went on to say, based on the discussions of that day, with about 30 stakeholders, and based on the high level scoping analysis, we selected Kielder.
	<b>Many</b>	Disagreements over PO's claims about what was said. You said NSA and NFU agreed to this and that's rubbish, telling lies. Call to retract his statement.
	<b>PO</b>	You're not being very polite.
	<b>LR</b>	You're not being very honest.
	<b>NFU member</b>	I know that the NFU left the meeting early – claims are not honest
<b>9</b>	<b>LR</b>	Questioned claims made by PO at the start of the meeting relating to the national consultation report, that a percentage of NFU members responded positively to the consultation.
	<b>DS</b>	We have the information and can give it to you. It's all on the website, nothing is hidden.
	<b>LR</b>	You have given no indication that the information you're providing is reliable and PO's behaviour at the meeting has not helped that. People have a right to be sceptical.
	<b>DS</b>	I understand that but the website has the information that is correct.
	<b>Many</b>	Reiterated that PO deliberately miscommunicated, implying that the NSA and NFU were involved in the decision to choose Kielder as the release site.
	<b>PO</b>	Rebuffs, it may have been badly worded. We didn't say the NSA and NFU voted for Kielder.
	<b>SW</b>	You should agree to disagree about the facts.
	<b>DS</b>	The NFU did walk out of the meeting in Ambleside. The next steps – a wider national stakeholder group being formed and the NSA have agreed to take a seat on this group.
	<b>NSA member</b>	No we haven't! That's absolutely wrong. We refused.
	<b>LR</b>	Everyone has to realise that this gentleman is the Chief Executive of the NSA and he knows what he's talking about, he knows the facts.
	<b>PO</b>	We've got an email from him, to confirm the NSA will be sitting on the board.
	<b>CE NSA</b>	Rebuffed – you've got no confirmation that we're going to be involved with any stakeholder group
	<b>Audience</b>	Applauds
	<b>DS</b>	That's not the information we received. The problem is it's very emotive.
	<b>LR</b>	It's a free for all here. Elements of the audience against, elements are for and elements in the middle. Respect all views, but this meeting needs a chairmain.
	<b>DS</b>	Purpose of the meeting – a hello.
	<b>Many</b>	Laughter
	<b>DS</b>	Legally bound by licensing laws for this kind of project, we have to conduct a local consultation. This meeting is the first hello, but will be doing further consultation. We want to collect all your opinions across support, we will include all the opinions in the licence application that is sent to the government.
	<b>SW</b>	So we want questions.
	<b>LR</b>	Not opinions.
	<b>SW</b>	No questions from people of what they want clarified.
<b>10</b>	<b>LR</b>	Why? And Why here?



	<b>DS</b>	Legal aspects – government is legally bound to look at reintroductions of species that were once native in the UK.
	<b>Many</b>	Unintelligible reaction from audience
<b>11</b>	<b>LR</b>	A need to rush through the application because of Brexit
	<b>PO</b>	This was put forward long before the referendum was announced
<b>12</b>	<b>LR</b>	You said there is no history of a lynx attacking a human – google results include lynx attacks in Sweden
	<b>PO</b>	Captive lynx – behaviour different to wild lynx
<b>13</b>	<b>LR</b>	Have you got insurance, funding for purchasing lynx?
	<b>PO</b>	We won't be buying any lynx, elaborates on process for bringing lynx in, licence in place which will lay out responsibilities and liabilities. Strict legal framework.
	<b>LR</b>	Unintelligible questioning of PO's comments
<b>14</b>	<b>LR</b>	Where will you get the lynx from?
	<b>PO</b>	We're looking at Romania primarily. Up to 10 animals, wild caught. Already been to and spoken to contacts in Romania. 5 pairs.
	<b>DS</b>	They're solitary animals.
<b>15</b>	<b>LR</b>	Is this just a box ticking exercise – talking to local people?
	<b>PO</b>	Absolutely not.
	<b>LR</b>	I would like to see your results on tonight's consultation before they are fed back to anyone of any importance because it's very clear to me that you weren't expecting very many people here tonight and you've gone about this whole consultation in totally the wrong way. You didn't speak to local people, people who really matter, first. You've tried to persuade the press and everyone else that this is going to happen, when it comes to local people you think you can just rush over us, well you can't.
	<b>Many</b>	Applause, cheers
	<b>PO</b>	We haven't courted the press before we came here
	<b>Many</b>	Jeers/boos
	<b>PO</b>	We are contacted by press and TV daily, regularly decline requests from press, it's a beautiful animal, generates a lot of interest. Process was – 5 sites selected, couldn't start local consultation in 5 different sites, so went through high-level national consultation, then stakeholders, and the local consultation. And now we're here we want to hear everything you have to say.
<b>16</b>	<b>LR</b>	There are a variety of opinions, not just negative (unintelligible)
	<b>PO</b>	(NSA CE) has come down from southern England, he's not local. He knows his chairwoman from Scotland emailed me to see if they could come and we made it very clear that the NSA have already had their say at this stage and we're talking to people at local level. (NSA CE) has decided to come up here and sit in the front and make a fuss.
	<b>Many</b>	Jeers
	<b>DS</b>	I would like to answer your question about local consultation. This is just the beginning of the process, it will be fed into the process but there will be many opportunities over the next months to give your opinions and all the information will be put together and presented to the government. It will not be misrepresented, if we do then it puts the whole licence application process in jeopardy.
<b>17</b>	<b>LR</b>	Question over where the LUT get their funding from.
	<b>PO</b>	Run by a team of volunteers, our accounts will be made available, no tax payer money.
	<b>LR</b>	Claims that this is a funding exercise
<b>18</b>	<b>LR</b>	Question over protection of lynx – would be unfair to bring them over here to be killed.
	<b>PO</b>	We would want the lynx to have protected status and would work with statutory agencies to

		ensure that.
19	LR	Concerns raised over how the event was advertised – word of mouth
	PO	Explains how LUT contact parish council, local event for people who live in and around the village. Two new crews from Newcastle wanted to cover it, two local newspapers and a film crew from Australia who wanted to come but we refused. We didn't want the media here.
20	LR	Preferred diet of lynx is fawns. Decimate wildlife. Questions about eating habits of lynx and Flaviu (unintelligible)
	PO	Feeds on roe deer.
21	LR	Question over how to control lynx if they become vermin (such as fox)
	PO	It will breed, population will grow. Five-year trial – one breeding cycle. After 5 years we will collect all the data we've collected. They will be collared at all times, so if they become problem lynx we'll know, we'll know where they are at all times.
	LR	Question whether they'll need to change collars
	PO	We'll probably need to catch them once during that time.
22	LR	Question about lynx behaviour
	PO	Chances are tourists won't see a lynx, however that won't stop them from coming.
	Many	Laughter
	PO	It's not about seeing a lynx, it's about being where they are. Herz example.
23	LR	Question about predation rates and stocking densities
	PO	I don't know stocking densities in each country, taken averages, we can look at that data.
	LR	GPS so you will know where they are.
	PO	We do want to educate people about lynx behave so we do want to share data, but not real time as we want the animals to behave naturally. If lynx starts to frequent a farm/problem lynx then we will use that data to work with farm.
24	LR	Compensation for sheep predations
	PO	We want to discuss this with NSA and NFU, about how to put a fair compensation package together
25	Sheep farmer	NSA CE's wages paid by our memberships, I invited him. PO has been disingenuous with the truth and need to find a way of communicating in a more honest way. Question – ten lynx is not a sustainable population, genetically.
	PO	After trial, assessment will be made on whether the lynx should be fully reintroduced and how many lynx will be provided. Not LUT's decision.
	NSA CE	Guidance given from genetic research – should be 250 lynx in a sustainable population. So your end game is a population of 250?
	PO	UK can support a population of about 400 lynx.
	NSA CE	Answer the question of how lynx will be dealt with if they become vermin.
	PO	After the trial period the population will be handles by the government.
26	LR	Question about cattle farming.
	PO	Lynx unlikely to take a calf, risk low, and will compensate any livestock loss.
27	LR	Romania – what is sheep density there?
	PO	What is my knowledge of Romania's sheep density?
28	LR	Ambush predator – working on farms around Kielder – hefted sheep, following same path up to hills.
	PO	Lynx don't go on open moor, forest specialists.
29	LR	Are you part of a European organisation that wants to rewild lynx, European funding?
	PO	No

	LR	Are you looking at wolves as well?
	PO	Don't think that wolves are a fit for UK. Not involved in any European rewilding schemes.
30	LR	Question over funding for compensation post trial
	PO	Can't speak for the government. For the trial, we intend for farmers to be fully compensated and want to work with farmers to create a fair and reasonable compensation scheme.
31	LR	You're still quite sure we're going to have this trial so you're not listening to what we are saying.
	PO	We want the trial, we want it to work, if it doesn't work we don't want to do it. If they trial is not a success I promise, and LUT promises, we will not push for a full reintroduction. If you are sceptical, let's have this trial reintroduction, collect the data, because this debate has been going on for 30 years. Do a scientific trial with all stakeholders inputting and if the data doesn't fit then we won't want the lynx back.
32	LR	Tourism – Herz mountains – have you got figures for income in Herz mountains?
	PO	CBA done by expert in this area, looked at a range of ecotourism ventures across UK, came up with values. Not based on Herz mountains.
	LR	Conjecture on methods used.
	DS	Next piece of work as part of local consultation, look at CBA from local perspective. Standard methodology used all over the UK. Starting point as said.
	LR	Sea eagles, otters etc – people almost guaranteed to see them.
	DS	They go for the experience as well.
	PO	Africa – leopards at the top of the list because they are hard to see. Wildcats also an example. If you don't see a lynx you see pine martens etc
33	LR	Activities for disables and young children in Kielder, chance for vulnerable people to explore countryside. Large(ish) cat in area – no one wants it in the first people.
	PO	Don't agree with that last point.
	LR	Are you aware of the impacts? Why are doing this in a place that doesn't seem to want it?
	PO	Genuinely believe that it will benefit the area economically and ecologically. This is what has happened all across Europe – Herz example went ahead and was so successful a second is being planned, we want to put a panel of local people together, including business people, to go with us to Herz. Difficult, emotional, but a long process and we've just started.
34	LR	Lynx won't stay in the forest. Sheep right up to the forest edge. Badger a protected species and they've become a menace. Impact on other wildlife?
	DS	As sheep farmer you want us to accept the innate behaviour of sheep, but when it comes to lynx you won't accept the innate behaviour. We need to come together and understand each other. Lynx will behave in a certain way – lynx a specialist, unlike fox and wolves which are generalist.
35	LR	Farm right up to edge of forest. You will be encroaching on my private ground. Don't want LUT, lynx or tourists on my private ground.
	PO	In this area there are not a massive amount of jobs for young people. If trial goes ahead, we'll be employing people. We have 20-30 CVs from local people, emails from people asking about diversification opportunities. Tourists won't be allowed on your land unless you want them to. If lynx come onto your land we'll know it's there.
36	LR	Process – consultation. Will there be a vote at the end? What is the watershed moment?
	PO	Our job to collect feedback, thoughts and opinions, from everyone not only one or two sectors. A range of events, more formal than this, questionnaires, leaflets and information, online tools, knocking on every door we can, visiting every farm that borders Kielder. Collect data and submit it to statutory agencies. Not our decision.
	LR	Whose decision?
	PO	Statutory agencies – Natural England and/or SNH – asking them who we will need to submit to. It will be their decision.
37	LR	PO has previously claimed that Kielder is dying on its feet.
	PO	I said the countryside is dying. NSA chairwoman says she makes no money from sheep.

Ecological regeneration has stopped, people leaving area, houses on market not being sold, kids going to university and not coming back. Girl in the village told me that there will be no jobs in the area for her.

<b>38</b>	<b>LR</b>	Was the Forestry Commission invited tonight?
	<b>PO</b>	They are welcome to come. Anyone from FC staff can come.
	<b>FC employee</b>	Here, not because I was invited but because I was interested to come along to the meeting. FC position is that we've not been presented with any proposal and until we have a proposal we wouldn't have a position on it. But what we are interested in is the opinions of local people.
	<b>Many</b>	Applause.
<b>39</b>	<b>LR</b>	If they breed – what are you going to do about tagging the youngsters.
	<b>PO</b>	We'll know where lynx are as they'll be with their mother, will trap them and collar them as will be NB to know how new lynx will use the environment.
<b>40</b>	<b>LR</b>	Working forest – visitors use forest tracks. Won't be able to find a quiet area in the forest.
	<b>PO</b>	I've been around here quite a lot, places in this forest where few people car, I didn't see a single dog walker today, peak summer.
	<b>Many</b>	Negative response
	<b>PO</b>	What it suggests is that there are suitable places in forest.
	<b>LR</b>	Your data can bring out any information you want it to.
	<b>PO</b>	The firm we used is independent. Google them.
<b>41</b>	<b>LR</b>	I take objection to what you said about Kielder. It's one of the most visited places in England, thanks to eg dark skies, it's not dying. You can't get into the observatory.
	<b>PO</b>	I didn't say Kielder is dying. I've been quoted saying British countryside is dying.
	<b>LR</b>	It's not!
	<b>Many</b>	Jeers
	<b>PO</b>	Have you been to London? It's not one of the most visited areas...
<b>42</b>	<b>LR</b>	We know this area, lived in it for a long time, we know what this area is. I'd like to know about these people you have consulted so far in the rural area – which rural area?
	<b>PO</b>	Online survey, asked whether they were from urban or rural area.
	<b>DS</b>	Also an impartial survey where a survey company consulted, equal representation across areas.
	<b>LR</b>	What do you define as local area?
<b>43</b>	<b>Many</b>	Call for vote
	<b>PO</b>	A vote at this meeting isn't appropriate, local consultation, lots of people in this room who aren't local.
	<b>DS</b>	Not the right place. Allow people who don't want to talk in this charged environment.
<b>44</b>	<b>SW</b>	A lot of false questions, disbelief. Was supposed to be a local meeting. Two posters went out and one Facebook post. Started the ball rolling as there are people here talking, thinking and wondering about it. There will be further meetings and discussions but I'm going to close here. Kielder Parish Council are a link, nothing more nothing less.
	<b>DS</b>	Offer open invitation to engage on a one-to-one basis, write them down for us. It's very hard to collect people's opinions in this environment.
	<b>LR</b>	Another call for a vote.
	<b>SW</b>	Can say that the people at this meeting have had a vote – not the whole community but those who attended.
	<b>PO</b>	Need all the information in order to vote. We've just started the process. Out of people here how many of farmers. Probably not entirely representative of Kielder community.
	<b>Many</b>	Jeers, laughter

<b>SW</b>	Not going to do a vote – take away your thoughts and follow it and assist.
<b>LR</b>	Another call for a vote
<b>SW</b>	Not a true cross section

## Newcastleton Consultation Meeting – 30<sup>th</sup> November 2016

Chair: Michael Mayhew (MM)

Panel: Ian Convery (IC), Deborah Brady (DB), Paul O'Donoghue (PO)

LR: Local resident

Note taker: Steven Lipscombe

Notes taken during Question and Answer session following presentations.

- 1 Farmer 1:** **There are not as many deer as is being made out**  
**The forest is plantation so there is no natural regeneration for the deer to damage**

<b>Forester</b>	There is a problem with over-population of deer. Big impact on forestry UK wide Many Studies and evidence to support this. Sitka Spruce currently not natural regeneration but movement towards Continuous Cover Forestry which relies upon natural regeneration
-----------------	--

- 2 Local resident** Given initial introduction population and the number of deer will there be any impact on deer numbers?  
Will the low likelihood of actually seeing a Lynx lead to a rapid decline in visitor numbers after initial surge?

<b>PO</b>	Comparison to Herz: increase in potential and actual tourist numbers drove infrastructure development which increased the wider appeal of the region
-----------	--

<b>LR</b>	Scottish Wildcat – no real impact on tourism
-----------	--

<b>PO</b>	Not true comparison: Wildcat not a reintroduction, diffuse range under management and no eco-tourism focus built in
-----------	---

<b>DB</b>	Osprey rarely seen...still a huge drawing point for Kielder
-----------	---

<b>PO</b>	Actual numbers of deer predated is likely to be of less importance than the impact on deer behaviour (Yellowstone Analogy)
-----------	--

- 3 Local resident** Eco-tourist  
Lynx – Tiger of the North

India Tiger safari – unlikely to see but did!

How often are they seen in Harz?

	<b>PO</b>	Harz: has visitors centre with Lynx unable to be released to the wild Visitors centre and region acts provides a larger resource to ecological education for visitors
<b>4</b>	<b>Farmer?</b>	Questions the survey's independent credentials as member of Lynx Trust signed letter
	<b>IC</b>	Restated the set-up of the survey and its limitations
<b>5</b>	<b>Farmer</b>	NFU is not in favour Sea Eagles mean farmers unable to breed enough ewes Mentions Norway
	<b>PO</b>	Scientific knowledge from across Europe suggests large scale predation is unlikely to be an issue Norway is a unique case due to reporting methods and grazing practices
<b>6</b>	<b>Alpaca Farmer</b>	Alpacas and roe deer in field – will this draw Lynx to alpacas, will they stop at wood edge Population growth expectations What are success parameters Impact on other conservationally important species
	<b>PO</b>	Have exit strategy for all/individuals if problematic
	<b>Farmer</b>	What is the exit strategy and does the Dartmoor Lynx affect thinking on reintroduction
	<b>PO</b>	Dartmoor Lynx – bad habitat (no trees) captive animal with no hunting skills
	<b>IC</b>	Compensation to be worked out in consultation with NFU NSFA
	<b>Local res.</b>	It is not all about money!
<b>7</b>	<b>Farmer</b>	Expect fear behaviour in deer, will it be observed in sheep
	<b>PO</b>	Lynx do not chase to hunt; open ground is not attractive Harz; lynx spread from release site but only to other similar habitats
<b>8</b>	<b>Cattle Farmer</b>	Isn't Scotland a better option all round? Queries value of town people's opinions on rural matters
	<b>IC</b>	Kielder site preferred for several factors set out in documents
	<b>DB</b>	Consultation set up designed to gather as wide a field of inputs and opinions as possible
<b>9</b>	<b>Local res.</b>	What about impact on other conservation species esp. R Squirrel
	<b>DB</b>	Some limited evidence of squirrel predation Does not believe it to be big risk (would not be involved otherwise) Deer, fox, voles – ground dwelling, squirrels in trees Pine Martens possibly more of a concern and grey squirrels more time on ground
<b>10</b>	<b>Local res.</b>	What about when greys are gone!

**PO** Europe Pine Martens, red Squirrels and Lynx all co-exist

<b>11</b>	<b>Local res.</b>	What further consultation meeting are planned in the area
	<b>DB</b>	Langham, Etrick
<b>12</b>	<b>Local res.</b>	Have the stalking fraternity been consulted
	<b>PO</b>	Yes, no strong resistance. Harz – stalking community positive as enhances experience
	<b>Local res.</b>	St Boswolds? Deer trust against
<b>13</b>	<b>Local res.</b>	How well advertised Where do we find out more
	<b>PO</b>	Kielder was small Newcastleton deliberately a bigger effort
	<b>DB</b>	What can we do better
	<b>Local res.</b>	Mail shot Use Big Budget?!
<b>14</b>	<b>Local res.</b>	Population explosion of Lynx, then what
	<b>PO</b>	Apex predators do not have population explosions Restrictive factors on survivability
<b>15</b>	<b>Local res.</b>	Is it for Tourism or Deer control
	<b>IC</b>	3 reasons: Biodiversity Tourism Biological control of deer
	<b>Local res.</b>	We already have enough predators
	<b>PO</b>	Evidence suggests lynx lower number of problematic predators, badgers foxes etc
<b>16</b>	<b>Local res.</b>	Poor turn out, suggests a coffee morning
<b>18</b>	<b>Local res.</b>	Licence app to NE or SNH
	<b>PO</b>	Both involved in current discussions, final licence app to be dependent on side of border release occurs
	<b>Local res.</b>	Will these Lynx be juvenile or adult – will they be conditioned roe deer hunters (Roe Deer School)
	<b>PO</b>	Adult only, chosen to give best chance of success
	<b>Local res.</b>	Mentions failure at Polish site for this reason
<b>19</b>	<b>Local res.</b>	How will the off-spring be tracked
	<b>PO</b>	Ecological knowledge – 10 months with mother, then collar
<b>20</b>	<b>Farmer</b>	Will the Lynx be a protected species?
	<b>PO</b>	Yes – prerequisite for licence app

## Langholm Consultation Meeting – 12<sup>th</sup> January 2017

Chair: Michael Mayhew (MM)

Panel: IC Convery (IC), Deborah Brady (DB), Darrell Smith (DS), Erwin van Maanen (EvM), Sally Hawkins (SH)

LR: Local resident

Note taker: Steven Lipscombe

Notes taken during Question and Answer session following presentations.

1	Local Resident	Who is Paying?
	IC	Will be privately funded through grants, donations etc. Licence application will include proof of funding for duration of trial. No money currently funding project, all volunteers, pro bono etc. Not public money
	LR	Scottish Wildcat would be a better focus of funds
	IC	LUT links to Wildcat Haven Elsewhere in Europe both species as part of mixed carnivore habitats. Impacts will be addressed and appraised as part of application and actual trial
	EvM	Harz has healthy populations of both (WC & Lynx)
	DB	Conservation funding does not work as either/or. Lynx project could turn Kielder into hub for multiple conservation efforts, working synergistically.
2	LR	What are the chances of seeing a Lynx?
	EvM	Difficult to see. At Harz occasionally see tracks which is exciting
	IC	Evidence from Harz that low chance of seeing Lynx does not impact negatively on visitors Captive animal
3	LR	Deer numbers are high, Lynx will not bring these down, Forestry is poorly managed, professional job to control Deer. Useless Timber. Sees positives of Lynx reintroduction but not as a deer control factor
	IC	Trial data would show impacts on Deer and help inform future control measures
	EvM	Harz – forestry needed deer control measures. Lynx was chosen considering evidence for deer behaviour impact
	DS	Viewed as a holistic approach to solving a problem
	LR	Last 20 years Red Deer killed to protect CaledonIC Forest, not doing any good. Rangers not effective Plant less trees!
	MM	Are there any Deer Stalkers here?
4	Former deer stalker	What are the opinion of stalkers and FC?
	IC	Talks ongoing with FC, deer number estimates as part of discussions
	DS	Other forestry businesses also consulted



	<b>IC</b>	Private forestry companies are keen on idea. Anecdotal evidence suggests stalkers find the experience improved by more complex deer behaviours in predator presence
	<b>EvM</b>	Harz is a similar habitat, hunting practices do differ. Many deer removed by hunters every year. Hunting experience improved by presence of multiple predators
	<b>IC</b>	No Wolves or Bears in Kielder
<b>5</b>	<b>LR</b>	When will licence application be made and who to
	<b>IC</b>	Spring, NE, SNH
	<b>LR</b>	Will there be more consultation then
	<b>IC</b>	If specific request from NE/SNH as unhappy that consultation has met guideline requirements as set out by themselves and IUCN reintroduction literature
<b>6</b>	<b>LR</b>	Has Issue with predation figures Information on Dartmoor Zoo Escapee Huge sheep population in the UK Roe Deer will not be only prey...no way Sheep far easier prey Benefits to Arable?
	<b>IC</b>	Flaviu was a captive Lynx with no wild hunting experience, natural behaviours taught from mother. Released Lynx will be from wild
<b>7</b>	<b>LR</b>	How will they be kept in core area
	<b>DS</b>	Ambush predator, no chase instinct, will not leave woodland
	<b>EvM</b>	Reluctant to spread initially as required to cross open land. Romania and Georgia high sheep numbers, Lynx not viewed as a problem
	<b>IC</b>	Sheep will possibly be predated, evidence from Europe suggests problems would centre on specific animal or area. Measures implemented to address if this occurs
	<b>DB</b>	Exit strategy will be actioned, animals are tracked
<b>8</b>	<b>LR</b>	How do we prove sheep are taken by Lynx
	<b>DB</b>	Tracking data will prove presence of Lynx/Sheep in area. DNA can also be used Active conversation with Farmers and livestock holders to establish mechanism and level for compensation
<b>9</b>	<b>LR</b>	How do you justify it as balancing an ecosystem when it is only 1 apex predator introduction?
	<b>DB</b>	Control of populations due to prey availability and territory. Addition of Lynx replaces a node...evidence shows apex predators disproportionately strengthen networks
<b>10</b>	<b>LR</b>	Apparent wide public support? -not from farmers Unfair to ask opinion from people hundreds of miles away. Our area, our livelihoods... it's like asking us to vote on placing a Nuclear Suppository (sic) in Carlisle
	<b>IC</b>	Trial may not be a failure and cause farmers distress. Larger number of local stakeholders than just farmers
	<b>EvM</b>	Perceived risk noted. Farmers were fairly neutral to the idea. Although lower numbers and livestock pressures.
	<b>DS</b>	A dynaMM process
	<b>DB</b>	Lives local to release – children already talking about leaving the area. Good to

revive area and expand industry (tourism, education) to keep younger generation local. More jobs = larger cultural impact

<b>11</b>	<b>LR</b>	Questions £68m over 25 years – a tiny amount of money
	<b>DS</b>	CBA was a desktop analysis, not exhaustive. Actual figures are being reassessed on a local level numbers could be higher or lower.
	<b>IC</b>	It is generated by a model – AECOM are experts in ecological consultancy modelling, but still only as good as data, which is being reassessed
<b>12</b>	<b>LR</b>	Forestry Ops? Will the Lynx being mobile cause issues for FC?
	<b>EvM</b>	Harz is a farmed forest...no issues observed
	<b>LR</b>	Will operations be restricted during sensitive times (Pregnancy?)
	<b>IC</b>	A protocol will be discussed with FC and in place prior to any release
<b>13</b>	<b>Farmer</b>	What will happen to a farmer who shoots one?
	<b>IC</b>	Protected status – Prison
<b>14</b>	<b>LR</b>	Will tourist income be ring-fenced for local benefit? More tourists with dogs – increase conflict Increased pressure on infrastructure
	<b>DS</b>	Larger education of visitors on how to live in harmony with nature countryside community Timescale can be reassessed Time is right for reassessment of how humans live with nature
	<b>DB</b>	Town kids need to experience nature – excellent introduction and educational resource
	<b>IC</b>	Keep locals in area
	<b>LR</b>	Maximum age and dispersal rates? What is success/failure criteria
	<b>EvM</b>	14 years in the wild Population dynaMMs vary, part of trial observations
<b>15</b>	<b>IC</b>	Consultation will establish criteria When removed during or after will be trapped and relocated
	<b>LR</b>	Is there a defined boundary
	<b>DS</b>	Not practically restricted
	<b>IC</b>	Unlikely to move too far due to suitability of habitat and presence of prey
<b>16</b>	<b>DS</b>	Consultation process is essential to establishing operating parameters and protocols

## Tarset Consultation Meeting – 1<sup>st</sup> February 2017

Chair: Michael Mayhew (MM)

Panel: IC Convery (IC), Deborah Brady (DB), Paul O'Donoghue (PO), Darrell Smith (DS)

LR: Local resident

Note taker: Steven Lipscombe

Notes taken during Question and Answer session following presentations.

<b>1</b>	<b>Farmer</b>	<b>Yellowstone National Park; how many sheep and cattle farmers there</b>
	<b>DB</b>	Yellowstone is an example of trophic cascade to illustrate the concept.
	<b>Ian</b>	Compensation strategy with farming community at Yellowstone is a good example of where issues were encountered but scheme designed well and operated successfully
	<b>PO</b>	Wolves would be a big livestock threat – not looking at reintroducing
<b>2</b>	<b>Forester</b>	Mentions scale of Yellowstone and link to scale of effect observed
	<b>IC</b>	Yellowstone would not be the best example of exactly what may be observed at Kielder. Reiterates it is used as an example of trophic cascade concept
	<b>PO</b>	Research into reintroduction suitability has shown wider uplands and border region could support 400 Lynx
<b>3</b>	<b>LR</b>	Harz – How many sheep farmers Aren't the Lynx in cage to see one?
	<b>PO</b>	Very similar landscape but more constrained by human infrastructure (motorways, farmers and Industry)
	<b>IC</b>	Visitors centre & large enclosure. Possibly same could happen at Kielder. People will still visit even if chance of seeing one is low. Tracking is attractive and simply the idea of their presence will draw people
	<b>PO</b>	10-14k visit caged Lynx – 100k go to wider area. Some bad treatment of Lynx across Europe – could be a sanctuary
<b>4</b>	<b>Farmer</b>	Project dependent on opinion? If 80% do not want the project to go ahead what impact would that have on the application
	<b>IC</b>	Application and consultation has to show local/regional/national feeling toward project. Following inform/discuss/gauge/report. Then to NE/SNH to decide
<b>5</b>	<b>Farmer</b>	Local News: MP conducted door to door survey which completely contradicts Lynx Trust data
	<b>DB</b>	Conversation with G.O. Survey was not door to door. Posted 400 letters to Kielder area. Lynx question as part of a wider set of questions on local issues followed by invitation to rate MP 90% said no – very similar to LT 91% figure both open questions and of limited methodological merit
	<b>LR</b>	So, 91% result irrelevant?
	<b>DB</b>	Have asked GO for responses and will be submitted along with Licence application. Initial survey is not the end, more robust opinion sought door to door etc
	<b>IC</b>	I teach methodology, GO letter would fail
<b>6</b>	<b>LR</b>	Using same method with 91% result so just as unreliable. Was quoted as Local survey in local press?
	<b>DB</b>	Was for businesses only
	<b>PO</b>	Mistake made, attempted to correct before print, can show email if requested. Information miscommunicated (mis-quoted?)
	<b>DB</b>	Local response still neutral – positive
<b>7</b>	<b>LR</b>	Are the positive businesses agricultural businesses?
	<b>DB</b>	Residents Businesses

		Farmers Actual respondent's backgrounds will be part of final analysis
8	LR	Doing GO an injustice lots of respondents have been to consultations. No door to door at my house. What will prey on Lynx? Previous reintroductions have been disastrous
	PO	Lynx is an apex predator so no natural predator. Populations dependant on prey availability and habitat. Low prey = low breeding rate and success – condition and fitness decreases
	Many	So they will target sheep!
	PO	Animals will be tracked if there are issues
	LR	We don't want them here
	DB	We are the first people to attempt. There is a big body of evidence to support the area as suitable for reintroduction. Nothing observed elsewhere to suggest population explosion would occur. Animals will increase in numbers and spread, but only to available and suitable habitat
9	Local Councillor	Been to several presentations – seems to be a change of tack, initially said if there was local opposition the project would not be pursued. GO sent a simple question to electoral roll
	MM	The process was democratic but the results and data were not meaningful
	LC	I think you are stretching the truth (LT Survey results)
	DB	Farms are businesses? Any business residents are included and will be counted
	IC	Consultation is incomplete all data will be published and methodology validated
10	Farmer	Disingenuous to suggest presentation is unbiased, this is just a publicity drive. Questionnaire in my house filled in for me Persuasion tactics
	DB	Different ways of filling in questionnaires all are stored and available if you want to check. Some have been filled in at the time, others later. Apologises if the interview made her feel less than comfortable
	IC	Set up to investigate and promote the idea of reintroduction. Bias naturally towards positive.
10	LR	Bully-boy tactics treating locals like fools and poor behaviour in press and meetings
	PO	There have been no press releases for a long time. Do not feel we are employing bully-boy tactics Replied to questions asked and you should credit journalists with having ability to see if we were being less than genuine
11	Many	What about threat to go ahead regardless?
	PO	You should try to become involved in process to affect outcome. In Germany initial reaction was negative now all positive. Compensation pay-outs minimal, there is no ongoing conflict with farmers. If at Kielder it does not go well in 5 year trial will go no further.
	IC	Apologises for poor phrasing
	DB	Report from State of Nature; UK is bottom of the pile in terms of biodiversity loss. Planet has lost 2/3 in 40 years We are ecologists

		It is a painful legacy for the generations that are to follow. Reintroduction is a response to these figures
12	Farmer	Articles from Sweden and Norway: 'Do not do it! Compensation is not paid as is difficult to prove Special breeds are not represented in compensation figures, how will these be compensated Where will the money come from?
	PO	Licence is dependent on finances being proven. Lynx will be collared and the location known at all times Swedish report also lists bear and wolf losses
	LR	Disputes, says only Lynx
	IC	Yellowstone again: Good compensation scheme set up in consultation with all stakeholders until all parties happy
	DB	Why so important for farmers to work with the project
13	LR	I am scientist/statistician. Validity of questionnaires? Lynx project people asking questions, is like a pressure group
	IC	Questionnaires are only one part. Designed to be objective. Overview and interests. N.E. will assess methods and data. Science always has a level of subjectivity. Need for triangulation of efforts and transparency
	LR	Lynx people asking questions has affect on answers given
	DB	Second survey independent
	IC	Third party with no pre-existing connections to trust. Diversification of sources
14	LR	Debating the statistics does not achieve anything. Chance to be part of something. Do you know the demographic of the people surveyed? Age?
	DB	I have a background in education so am keen for younger people to be on forum. Young people much more enthusiastic to make a difference. Personal reason is for education and opportunity. Current situation is really bad for local opportunities. Wider feeling is one of negativity, the project is inspirational and exciting
	PO	Jobs and excitement, young people will be inspired
	LR	Clarify the types of jobs
	PO	Eco-tourism, infrastructure, tourism, services. People are leaving the area. Scotland is a good example, will help tie people to the area and build community
16	DS	Lots of money donated to tigers, Rhinos, leopards etc...maybe time to focus closer?
17	Police Wildlife Officer	Aware of government ideas on matter – has problem with prey: squirrel drays, heathland birds, otters. Reintroduction will conflict with existing conservation
	PO	95% Roe deer diet across Europe Lynx attacking a dray is unlikely
	DB	First thing I looked at would not be involved if I suspected any conflict with R.Squirrel. Lynx attacking a dray is unlikely. Scat analysis shows diet variation but is always vast majority Deer, followed by Fox. If fox taken, good for Game Bird numbers. Lynx is forest dwelling
	LR	Works with organisations and asks the question: Harz – No large sheep population. They will take other prey. Hen Harriers is the only breeding population in North east. How will the Lynx be protected during and after trial?
	DB	In mainland Europe they co-exist with squirrels and many other predators/prey. Is about rebuilding the ecosystem by replacement of essential nodes
	PO	Evidence that Lynx have positive impact on Capercaillie numbers. Pine Marten and Fox control
	LR	Farmers can shoot other vermin but not Lynx

	<b>PO</b>	Huge interest in bird conservation and truly believe there will not be a conflict
<b>18</b>	<b>Resident</b>	Data gathering and survey is all abroad, has there been any ground survey of Kielder on ecology and suitability FC consulted?
	<b>IC</b>	AECOM ongoing work at Kielder feasibility study complete. Still talking to FC
<b>19</b>	<b>LR</b>	Kielder Forest vs private farmland, what are the legal aspects of releasing animals onto my land? Badgers, curlew fox control. My farm not visited.
	<b>PO</b>	Consultation is still on-going and we do want to talk to you and everyone
	<b>LR</b>	Little or no respect for farmers. Lynx Trust should do it on their own land
	<b>PO</b>	Lynx on farmland is not good for either side, could be ways to mitigate this
	<b>DB</b>	Your name is on list. 100 hours already spent door to door, still more to do.
	<b>LR</b>	Stewardship has encouraged perfect Lynx habitat on my farm
	<b>IC</b>	Compensation
	<b>LR</b>	Do it on private contained land
	<b>PO</b>	Would not be a representative trial
	<b>LR</b>	Intelligent panel but no common sense
<b>20</b>	<b>LR</b>	Highly selective information provided. Feasibility study not ground based so not meticulous enough, not FC standard. Live experiment in uncontrolled environment. Monitoring techniques problematic. Genetic issues with Lynx Hetherington says borders = 50 max cairngorms 250 max. without corridors genetic pool too shallow - unsustainable
	<b>IC</b>	Feasibility study AECOM professional. Modelling work. Worked with FC AECOM
	<b>PO</b>	FC respectful of AECOM techniques
	<b>LR</b>	Are they on the ground?
	<b>PO</b>	Ground truthing GIS satellite imagery
	<b>IC</b>	AECOM are on the ground
	<b>LR</b>	Why is full assessment data not in front of us – it should be
	<b>IC</b>	Consultation and wider work is ongoing
	<b>PO</b>	Genetics – Black Rhino has less than 50
	<b>LR</b>	The literature contradicts you
	<b>PO</b>	Translocation of Lynx to add genetic variation, from a pop of 250 use meta-population management techniques. Will be managed as part of a wider European population
<b>21</b>	<b>LR</b>	Do you have any similar comparison, Yellowstone does not match. Sweden recommends no reintroduction
	<b>PO</b>	Yellowstone example of trophic cascade. Yellowstone is an ecological model. Data from multiple sites with Lynx
<b>22</b>	<b>LR</b>	How much money involved in surveys, placing Lynx etc
	<b>PO</b>	Costs a fraction of benefits. Amount of funds dependent of conditions of licence. Ongoing costs ecologists etc
	<b>IC</b>	Privately funded
<b>23</b>	<b>Many</b>	Call to vote – not counted

## Appendix IV: Community questionnaire

### Community Questionnaire

Date completed:     /     /

<p>Have you heard about the Lynx UK Trust's proposal for a trial reintroduction of lynx?</p> <p style="text-align: right;">Please circle: YES / NO</p>													
<p>Please list below what you believe to be the key risks and benefits of a trial reintroduction of lynx.</p> <table style="width: 100%; border-collapse: collapse;"> <thead> <tr> <th style="text-align: left; width: 50%; border-bottom: 1px solid black;"><u>Benefit</u></th> <th style="text-align: left; width: 50%; border-bottom: 1px solid black;"><u>Risk</u></th> </tr> </thead> <tbody> <tr> <td style="border-right: 1px solid black; padding: 5px;">1.</td> <td style="padding: 5px;">1.</td> </tr> <tr> <td style="border-right: 1px solid black; padding: 5px;">2.</td> <td style="padding: 5px;">2.</td> </tr> <tr> <td style="border-right: 1px solid black; padding: 5px;">3.</td> <td style="padding: 5px;">3.</td> </tr> <tr> <td style="border-right: 1px solid black; padding: 5px;">4.</td> <td style="padding: 5px;">4.</td> </tr> <tr> <td style="border-right: 1px solid black; padding: 5px;">5.</td> <td style="padding: 5px;">5.</td> </tr> </tbody> </table>		<u>Benefit</u>	<u>Risk</u>	1.	1.	2.	2.	3.	3.	4.	4.	5.	5.
<u>Benefit</u>	<u>Risk</u>												
1.	1.												
2.	2.												
3.	3.												
4.	4.												
5.	5.												
<p>To help ensure that the information we collect is representative of your community please complete the following:</p> <p>Gender (please circle):                      Age group (please circle):</p> <p style="margin-left: 40px;"> Male          Female                      Under 16:    16-24;    25-34;    35-44;    45-54;    55-64;    65+ </p> <p>Post Code:                                      Occupation:</p> <p>We are currently at the early stages of collecting the thoughts and opinions of your community and would appreciate it if we could contact you again as the project develops, this could be in the form of interviews, questionnaires, emails or phone calls. Would you be willing for us to contact you?</p> <p style="text-align: right;">Please circle: YES / NO</p> <p>If yes, please provide your contact details. Please note that your contact information will only be used by the Lynx UK Trust and their partners for the purposes of contacting you in regards to the proposed trial lynx reintroduction in your area. We will not share this information with any third parties.</p> <p>Name &amp; Address:</p> <p>Email:    Preferred phone no.:</p>													

If you have any further comments please use the space below:



## Appendix V: Informational leaflet



### WHO ARE THE LYNX UK TRUST?

The Lynx UK Trust is a public interest organisation which receives no government funding and where all members work on a volunteer basis.

The Trust was formed by a group of experienced conservationists, scientists, and professionals with specialisations in wild felines, genetics, field research, reintroductions, education, law, project management, and communications.

In order to provide support the Trust has commissioned:

- AECOM to provide a team to lead the research needed to develop the evidence base.
- Clifford Chance LLP to provide legal guidance and project management expertise.
- The University of Cumbria to provide expertise on stakeholder consultation and forestry issues.

### WHAT ARE WE PLANNING TO DO?

**Research** – we are surveying locations, developing the evidence base, and talking to stakeholders across the UK to identify potential release sites for a trial reintroduction of lynx to the UK.

**Educate** – we are working closely with local communities, stakeholders, and the general public to improve understanding of lynx and their place in the UK's ecosystems.

**Release** – we are applying for a licence to release a small number of closely monitored lynx as part of a scientifically led trial reintroduction.

### WHY DO WE WANT TO HOLD A TRIAL LYNX REINTRODUCTION?

**Restoring ecosystems** – reintroducing an apex predator would help to restore balance to the UK's ecosystems by:

- Controlling numbers of deer which would allow woodlands to regrow.
- Controlling fox populations which would allow songbirds to thrive.
- Causing other species to behave and interact in a more natural manner.

**Controlling deer** – lynx would help to control the UK's growing deer populations which could have a range of economic benefits including:

- Reduced costs to forestry operations.
- Lower risk of deer related traffic accidents.
- Less damage to arable crops near woodland areas.

**Inspiring the UK** – a survey of the UK public found that 91% of people would support a trial reintroduction of lynx to the UK. This level of public engagement could provide a huge boost to interest in the UK's conservation industry.

**Regenerating rural communities** – a cost-benefit analysis of the project estimated that reintroducing lynx at two sites in the UK could provide net benefits to the UK economy of £68 million over a 25 year period and provide a source of rural jobs due to the benefits from ecotourism and reductions in deer populations.

**Developing the evidence base** – as a team of scientists, the Trust wants to make sure that any decision over lynx reintroduction is based on the best available evidence and the Trust believes that a trial reintroduction is the best way to enable the government and local communities to decide whether a reintroduction should go ahead in the UK.



## WHAT IS THE PROCESS INVOLVED IN A TRIAL?

### March 2015 – April 2015

National survey to see if the public are in favour of a trial lynx reintroduction.

### May 2015 – June 2016

Selection of five potential sites for the trial reintroduction.

### July 2015 – October 2015

Initial cost-benefit analysis of reintroduction at each of the sites to identify the possible impacts on rural economies.

### November 2015 – ongoing

Development of an outline proposal for the trial reintroduction and consultation with national stakeholders to get feedback, identify potential issues, and refine the details.

### July 2016

Provisional site selection exercise to establish the most suitable site for a trial based on results of the consultation exercise and a review of the evidence.

### August 2016 – ongoing

Local consultation in the Kielder area to assess the extent of support within the local community for the trial. If there is insufficient support for the scheme another site will be looked at for the potential trial.

### August 2016 – ongoing

Detailed data collection of habitats in the area, food availability, forestry operations, impacts on sheep farming, and potential visitor numbers to provide a more detailed assessment of the impacts on the local area and economy.

### Spring 2017

Preparation and submission of an application for a licence to hold a five year trial to Natural England and Scottish Natural Heritage.

## HOW CAN I FIND OUT MORE INFORMATION?

There are a number of documents available on our website – [www.lynxuk.org](http://www.lynxuk.org) - these include:

- The results of a public survey of attitudes towards the trial.
- The initial consultation documents containing the proposal for a trial reintroduction which provide details on:
  - Who is making the proposal.
  - Why we want a trial.
  - The process for submitting a licence application.
  - Ecological and economic impacts.
  - How we would go about conducting a trial.
  - The possible release sites.
  - Potential exit strategies for ending the trial.
- A high level cost-benefit analysis of the impacts of reintroducing lynx at five potential sites in the UK.
- An overview of the national consultation process and written responses.
- An assessment of the potential sites and the reasons for selecting Kielder.

If you have any further questions you can contact the Trust at: [consultation@lynxuk.org](mailto:consultation@lynxuk.org).

You might notice that there is no final project plan or proposal at this stage – this is because we are still in the process of speaking to national stakeholder organisations and the local community in the Kielder and Scottish Borders area. We want your feedback to feed into the way the project progresses, so we can't produce a final plan and proposal until we have spoken to as many of you as possible.

## Appendix VI: Farmer group meeting notes

### Inaugural Farmers Meeting

#### Date

25<sup>th</sup> April 2017

#### Location

The Cheviot Pub, Bellingham

#### Attendees

Farmer – 1 (F1)

#### Lynx Project

Mic Mayhew (MM)

Deborah Brady (DB)

Steven Lipscombe (SL)

#### Chair

Lois Mansfield (LM)

PT = Project Team

The meeting was recorded.

### Proceedings

<b>F1</b>	<b>What is your veterinary background [Mic]</b>
<b>MM</b>	Black Isle – cattle and sheep Worked through Foot and Mouth Then Small animal
<b>Presentation</b>	Loss of species, root causes and main drivers Holistic approach required to redress
<b>F1</b>	PR: Badger control, RSPB Raptors Lynx will adapt to available prey Sheep in or near woodland Harz comparison is limited due to landscape and farm type difference
<b>Summary of Concerns</b>	Distance travelled? Literature is anecdotal Norway 10/11 sheep/lynx/year Sea Eagles in Scotland taking ewes faster than breeding Replacement is impractical in hefted flock
<b>PT</b>	Targeted mitigations Exit strategy
<b>F1</b>	Considering appetite adaptation to available prey (sheep)
<b>Discussion</b>	Foxes Killed? 99 on land and neighbouring (F1) Foxes Kill avg. 8 lambs per farm (farm questionnaire) Lynx reintroduction shown to reduce fox numbers

<b>F1</b>	1 lamb is too much flocks are not passionless stock, emotional connection with shepherd
<b>PT</b>	As population (Harz) increases some males cross open land to reach new territory
<b>F1</b>	Less of a concern as GPS tracked Concern with lack of full time shepherds 1943: 43 2017: 1 (possibly) non-local shepherds problematic Pre-warning essential
<b>PT</b>	Loss of sheep must = adequate compensation And dealing with any problem Lynx
<b>F1</b>	My opinions not widely held. I am aware of the requirements of the licence in terms of control and monitoring Most farmers will not give project the benefit of the doubt Cannot afford the risk Sheep farming in decline, will go like cattle
<b>Compensation</b>	Options discussed
<b>F1</b>	Combination: initial sweetener + compensation on loss Wind turbine model? Market figures discussed Valuation not a science: Previous pedigree of animal and farmer, market forces....superstition?! Adjudication essential (Auctioneer)
<b>PT</b>	Monitoring of livestock alongside lynx monitoring (GPS)
<b>F1</b>	Measurement of stress interesting (previous role involved assessment of stress effects of transport)
<b>Discussion</b>	Field verification of Lynx kills
<b>F1</b>	Not of huge concern as understands is combination of field signs and knowledge of lynx locations. Is BSE potentially a problem...cats been shown to vector
<b>PT</b>	Not a huge concern
<b>Final Opinion (F1)</b>	Remains opposed to trial Would not be willing to contribute to research if lynx in proximity to farm Trial/Project is misconceived

## Second Farmers Meeting

### Date

24<sup>th</sup> May 2017

### Location

Kielder First School

### Attendees

#### Farmers & Representatives

Farmers 6 (F1-6)

Auctioneer 1 (A1)

#### Lynx Project

Deborah Brady

Mic Mayhew

Darrell Smith

Steven Lipscombe

Gill Chilvers

PT = Project Team

The meeting was recorded.

## Proceedings

#### **Introductions**

**Some first-time lynx project meeting attendees**

**Introduction to intentions of farmer's meetings**

**Recap of previous meetings**

**Recording consent forms**

**PT**

Probability is that Lynx will take livestock

#### **Presentation**

Area of trial, tacking tech and methods, 5 year trial, behavioural analysis

History of Lynx reintroduction will inform predictions at Kielder

**F3**

How many after 5 years

**PT**

10-14 including original 6

Explanation of ecology

**F3**

When do young start to breed? Numbers are wrong

**PT**

Numbers are evidenced

**F2**

Animals separate prior to release?

**PT**

Yes

**F3**

From Abroad

**PT**

Talking to Swedish experts: no rabies good populations



<b>F3</b>	Hunted in Sweden
<b>PT</b>	Yes it is part of culture
<b>F4</b>	It is a historic and unbroken population (in Sweden)?
<b>PT</b>	Yes
<b>F5</b>	If there are lots of them why reintroduce
<b>F1</b>	Fertile at what age
<b>PT</b>	2+
<b>Presentation</b>	Species loss globally 58%
<b>F5</b>	Questions numbers
<b>F2</b>	Links to previous reintroductions and threat to
<b>A1</b>	Why Apex predators?
<b>F6</b>	What of population increases
<b>PT</b>	Due a reassessment of how we live and relate to nature
<b>F2</b>	Deer – Man hunts them
<b>PT</b>	Costs Impacts
<b>F3</b>	How many deer?
<b>PT</b>	FC and private forestry numbers indicate big problem Tillhill £6-8 per acre per year
<b>F2</b>	Mostly FC only in England
<b>PT</b>	Spadeadam = 19 deer per sq km Kielder = 6 deer per sq km
<b>F2</b>	How many culled in Spadeadam
<b>PT</b>	200-300 a year Behavioural changes more relevant to project
<b>F2</b>	How tall are trees needed to be for Lynx to utilise
<b>PT</b>	Scrub is suitable
<b>F2</b>	Livestock hefted in heather and bracken seems likely to be at higher risk (Emblehope given as example)
<b>F3</b>	Give farmers app with location of Lynx
<b>PT</b>	Relationships need to start now and be developed long before release Warning farmers caused panic in Harz
<b>F6</b>	Sea Eagles
<b>F3</b>	Give Farmers app
<b>Summary of Concerns</b>	Lynx taking lambs and other animals No Benefit to farmers Financial and emotional suffering How far travel How many sheep taken Compensation system
<b>F1</b>	Major concern as highest density sheep farming in world Lynx are opportunistic – sheep will be targetted
<b>A1</b>	Sheep/lamb more attractive than deer
<b>PT</b>	Not in evidence from Europe Certain individual animals/locations cause issue Local landscape is unique Voges = 2-3 sheep/lynx/year Norway = 10 sheep/lynx/year UK figure is unknown
<b>Valuation</b>	
<b>A1</b>	Not a science Variable – hefted/non, breeding Is there a ceiling? Arbitration Lynx kill verification
<b>Verification</b>	
<b>PT</b>	Harz – bespoke valuations by independent auctioneer Notification to payment = 1 week

	Verification by filed signs + telemetry
<b>F2</b>	Initial trial completely different to mature wild population
<b>PT</b>	20 years in Harz no major issues
<b>F2</b>	Long term is unknown so concerned
<b>PT</b>	Sea Eagle compensation scheme reactionary and did not adequately address issues + no exit strategy
<b>Valuation</b>	
<b>PT</b>	Harz = valuation + 40%
	Stress is difficult to quantify, (breeding, parasite, weight gain)
<b>A1</b>	Valuation only 1 part of process, questioned valuations cause contention
	Previous compensation schemes dropping in value
	Arbitration required
<b>F6</b>	Sea Eagles
<b>F4</b>	Rare breed sales are separate
<b>A1</b>	Valuations documented and agreed prior to market
	Protocols need to be established
<b>PT</b>	Licence binds in law
<b>A1</b>	Valuer's fees?
<b>F5</b>	Will they kill rams?
<b>PT</b>	Yes
	Is animals potential quantifiable
<b>A1</b>	Any evidence of variability of Lynx hunting behaviour
<b>PT</b>	Stock/woodland distance is driving factor
<b>Compensation Schemes</b>	
<b>PT</b>	Conservation Payment + Compensation Offset
<b>F1</b>	Both with no offset
<b>PT</b>	DEFRA 25 year plan intimates farm payments linked to biodiversity/nature benefits
<b>F2</b>	Is that not what we have been doing
<b>PT</b>	Foxes an issue
	Lynx shown to reduce fox numbers
<b>F1</b>	Secondary predator impacts a distraction
	Money & Compensation
<b>Summing Up</b>	
<b>F1</b>	Sheep will be lost. Not convinced of Merit
<b>A1</b>	Worried in 100 years people will ask 'why did they ever do that!?'
<b>F6</b>	GPS is essential. Sheep numbers dropping. No problem
<b>F5</b>	Skeptical of claims made in literature. Fox numbers unsubstantiated. Merits questionable
<b>F2</b>	Where is money from
<b>PT</b>	All costed prior to application
	Corporate sponsors upon grant of licence
	Fund raising
	Research grants (universities etc)
<b>A1</b>	What if money runs out?
<b>PT</b>	Risk accounted for
<b>F3</b>	30 years +, number of animals greater than number of new farmers, another problem making it unattractive.
<b>F1</b>	Ammunition for further licence application
	Will spend any trial collecting evidence to counter
<b>PT</b>	All data will be public
<b>F4</b>	Future generations should be focus
	Time to reassess relationship with nature
	Likes idea
<b>Discussions</b>	
	Hope, despair, the future

## Appendix VII: Business meeting notes

Bellingham Business Forum

### Date

7 November 2016

### Location

The Cheviot Pub, Bellingham

### Attendees

Driving Guides to Northumberland (DG)

Employment Solutions (ES)

Tyne Rede Accountancy (TR)

Heritage Centre (HC)

Wild Northumbrian Tipis & Yurts (WN)

Bellingham Camping and Caravan Site (BCC)

Members from local farming community (F)

Reiver Golf (RG)

Eastwood Burn Boarding Kennels (EB)

Sell the Moon ecommerce (SM)

### Lynx UK Trust

Deborah Brady

Michael Mayhew

Sally Hawkins

Steven Lipscombe

Questions and comments from each participant are noted below, all questions were answered by a member of the project team.

<b>DG</b>	<b>Queried breeding and exit strategy.</b>
<b>DG</b>	Kennel Club at Emblehope should be consulted.
<b>ES</b>	Concerns on GPS tracking. Breeding, population capacity. Question over where funding came from.
<b>WN</b>	Asked if a physical contact place for information was available.
<b>HC</b>	Threat to wild goats?
<b>BCC</b>	Large population increase could lead to pressure on available pretty and increase potential for



	sheep predation.
<b>F</b>	Queried perception of previously consulted people. Strong concerns on the level of compensation discussed – would be happy to be involved in further discussions.
<b>F</b>	Asked about lynx-badger predation as a TB control. Queried tracking of the lynx. Sees a well tracked/monitored reintroduction as a benefit to local population in a similar way to that of NT salmon. Owns cows – wondered about reaction of suckling cows to potential predator.
<b>F</b>	Commented that she was concerned it would go ahead regardless. Question about whether there has been a lynx release in Scotland. Value of compensation discussed does not cover Tupp breeding. GPS concerns as not tested in Kielder, doubted the ability to track in dense forest. Son's farm surrounded by Kielder Forest – what are the dangers to his young family?
<b>RG</b>	Questions why farmers feel the need to be so prominent in consultation. Strong opinions on letter from Guy Opperman MP. Asked about collar design and whether they would stay on. Deer reproduction rates sufficient to maintain prey levels. Understands GPS are capable of working in woodland. Stated there are sheep in the forest, for example at Deadwater Farm.
<b>RG</b>	Should feel honoured to be the location for such a project.
<b>SM</b>	Brilliant idea!

## Topic

**Inaugural Tourism Providers Meeting**

## Date

**7<sup>th</sup> April 2017**

## Location

**The Cheviot Pub, Bellingham**

## Attendees

### Local Business

**Wild Northumbrian Tipis & Yurts (WN)**

**Northern Wilds (NW)**

**Ravenshill Forest Park (RFP)**

**Brown Rigg Lodges (BRL)**

### Lynx UK Trust

**Sally Hawkins (SH)**

**Adam Eagle (AE)**

**Chris White (CW)**

**Elizabeth Hyatt (EH)**

**Chris Eves (CE)**

**Deborah Brady (DB)**

**Steven Lipscombe (SL)**

## Apologies

**The Bike Place**

**Wild About Adventure**

**Kielder Observatory**

## Proceedings

<b>CW</b>	<b>Overview of work to date by AECOM and summary of economic impact of Lynx on Harz Mountains</b>
<b>BRL</b>	Risk to children and small animals?
<b>AE</b>	Outline of why risk to humans is not a factor. Pets: AECOM study identifies v. low risk Harz: 1 possible hunting dog fatality No conflict expected at scale of trial
<b>CW, EH</b>	Summary of Harz Mountain visit Branding Walks + Art Wider regional buy-in Survey of reason for visit Rarity and elusiveness adds to appeal
<b>WN</b>	Infrastructure & Branding Is there plans to achieve this in Kielder

<b>Discussion</b>	Trust:- Business collaboration. Endorsement. Website space Funding: Micro Loans? Education: Research/outreach
<b>WN</b>	Where are the specifics of the plan? Projected outcomes Framework for their achievement
<b>NW</b>	Enclosure concerns: Context and reason need to be explained better
<b>Structured Q&amp;A</b>	
<b>NW</b>	[Lynx] add complexity to ecology and sense of wilderness cf. stargazing Concerns with communication to date Local ownership important with local character
<b>BRL</b>	Accreditation scheme, endorsement potential Happy to be visited for more information
<b>RFP</b>	Education of service providers so useful to visitors Badge mark to show association with project
<b>Discussion</b>	Generational disparity in perception of project
<b>AE</b>	Project expertise made available to businesses
<b>DB</b>	Preferential treatment is pWNlematic
<b>NW</b>	Location data important to setting up attractive tours
<b>WN</b>	5 years of research – will this work towards self-sustaining project Extended plan?
<b>Discussion</b>	Establishment of local forum to drive project Public and local ownership is essential Is the project trusted? Stakeholders beyond locals
<b>Questions</b>	Dissemination of some data on behaviour and territory for businesses based on outdoor tours would be useful
<b>RFP</b>	Publication/pamflets/contact points community website Training for locals?
<b>Concerns</b>	
<b>WN</b>	Information Hub Communications Transport Forestry Commission: such a huge stakeholder with control over access and land management
<b>Project Team</b>	FC will abide by licence decision Private Forestry very positive
<b>WN</b>	Trophic Cascade does not suit FC business plan
<b>NW</b>	Sharing of information
<b>WN</b>	Tarset community could be split along opposition and favour
<b>Discussion</b>	Alternative community network? Skilled public communicators Improved information streams
<b>Next Steps</b>	More similar meetings Wider stakeholder representation Mixed Stakeholder forum

## Appendix VIII: Q set

No.	Statement
1	The presence of lynx is crucial for the health of forest's ecosystems
2	The British countryside is no longer a suitable place for a sustainable lynx population
3	I feel the resources spent on the trial could be better directed to those species already present in the UK
4	Lynx should be introduced as a natural control of deer
5	Lynx should be introduced to the UK and any uncertainties can and must be dealt with
6	I am concerned that the lynx will pose a threat to our native wildlife during the trial
7	It is critical to use biological data and sound science in this trial of introducing lynx
8	I am concerned that lynx will be a threat to livestock during the trial
9	I am concerned that the lynx will cause economic suffering to farmers and/or countryside managers
10	I trust the conservationists and scientists behind this trial proposal
11	It is important that the trial has a well-defined exit program in place, which guarantees reversibility
12	It is important that adequate compensation agreements are in place, should the lynx cause any destruction
13	Lynx could beneficially add to the rural economy through eco-tourism
14	Having lynx in the countryside would make it more interesting
15	I am happy and excited for the trial to go ahead
16	Lynx are not compatible with our society today
17	A well-designed and regulated trial could help inform decisions on whether lynx should be introduced or not in the future
18	There is too much uncertainty about control measurements during the trial
19	All aspects of the trial must be transparent and open for all
20	The trial's plan of introducing 6 lynx for 5 years is too low to be scientifically sustainable
21	Public education and outreach programs for the public should have high priority
22	I am concerned that the lynx will be a threat to people during the trial
23	The trial must engage, consult and involve local communities and stakeholders
24	We have an obligation to try and restore our natural ecosystem as much as possible. The trial is one step towards that
25	The welfare and safety of the lynx is of highest importance, both during the trial and at the end of the trial
26	There is not enough funding within the trial to implement what needs to be done
27	A clear vision on what the long-term management plans beyond the trial are vital
28	I do not think this area is suitable for the lynx
29	The trial would have negative impacts on my personal situation
30	I believe the trial will have a positive impact on the local community
31	Having lynx in this area would help put Kielder on the map
32	I believe having lynx here, although rarely seen, would create an exciting sense of wilderness

- 33 I am concerned that the lynx will be a threat to pets during the trial
  - 34 I believe the local community could come to enjoy having lynx here. But it would take a long time
  - 35 I am concerned that the lynx will disperse from the trial release area
  - 36 I believe the lynx will offer more opportunities for employment to the younger generation in particular
  - 37 Lynx would have a negative impact on the venison and/or deer stalking industry
  - 38 I do not know how to voice my opinion to the Lynx UK Trust
  - 39 I have read the trial proposal document
  - 40 I am happy with the way the consultation has been carried out
-

## Annex IX. Mapping consultation activity against the 10 IUCN Social Feasibility Guidelines

IUCN Social Feasibility Guideline (IUCN/SSC, 2013)	Lynx Consultation	Implications and further initiatives to be undertaken
<p>5.2.1. Any conservation translocation proposal should be developed within national and regional conservation infrastructure, recognizing the mandate of existing agencies, legal and policy frameworks, national biodiversity action plans or existing species recovery plans</p>	<p>Stakeholder consultation has been managed in accordance with national conservation infrastructure. Dialogues were open with Defra, the Scottish government, Scottish Natural Heritage and Natural England as well as other relevant governmental bodies and there was discussion regarding the approach taken during the consultation.</p>	<p>The approach taken with governmental stakeholders should continue. The full consultation plan, with a focus on national to regional consultation, was logical in conception but with hindsight this approach alienated key regional non-governmental stakeholders. Ongoing plans should seek to involve regional stakeholders in community conversations.</p>
<p>5.2.2. Human communities in or around a release area will have legitimate interests in any translocation. These interests will be varied, and community attitudes can be extreme and internally contradictory. Consequently, translocation planning should accommodate the socio-economic circumstances, community attitudes and values, motivations and expectations, behaviours and behavioural change, and the anticipated costs and benefits of the translocation. Understanding these is the basis for developing public relations activities to orient the public in favour of a translocation.</p>	<p>Data collected reflect the extreme polarity in a series of crucial aspects of lynx reintroduction, which has been often voiced in a polemical fashion.</p>	<p>Complexity in several attitudes and values, especially diverging views on nature, needs to be further investigated. Data collection should continue, using more focused discussion, in order to ensure data represents a wide range of views. The planning and implementation of any project after completion of further data collection must directly address community attitudes and values and this must translate into the execution of any reintroduction rather than being a desk-based or ‘on paper’ exercise.</p>
<p>5.2.3. Mechanisms for communication, engagement and problem-solving between the public (especially key individuals most likely to be affected by or concerned about the translocation) and translocation managers should be established well in advance of any release.</p>	<p>This is particularly key for the farming community, who are most likely to be adversely affected by the proposal. Methods used initially to attempt to engage the farming community were not widely received, however more recent focus groups have tentatively opened lines of communication.</p>	<p>It is essential that the farming community are fully involved in the development in key areas of project management such as compensation for livestock predation, mitigation measures to prevent livestock predation, monitoring protocols, measures of success and exit strategy. This work has started, and there were some signs of trust and engagement developing. Perceived lack of information among the wider community also indicates the need for improved</p>

5.2.4. No organisms should be removed or released without adequate/conditional measures that address the concerns of relevant interested parties (including local/indigenous communities); this includes any removal as part of an exit strategy.

Data collection during initial consultation activities have highlighted a number of stakeholder concerns in the Kielder area.

5.2.5. If extinction in the proposed destination area occurred long ago, or if conservation introductions are being considered, local communities may have no connection to species unknown to them, and hence oppose their release. In such cases, special effort to counter such attitudes should be made well in advance of any release.

This is a relevant issue with the trial as lynx have been absent from this landscape for over 1300 years. Thus far, the case for reintroduction has largely been based on examples from Europe, the potential economic benefits through tourism and the potential for trophic cascades to control deer numbers and encourage ecosystem restoration (with added benefits to biodiversity).

5.2.6. Successful translocations may yield economic opportunities, such as through ecotourism, but negative economic impacts may also occur; the design and implementation stages should acknowledge the potential for negative impacts on affected parties or for community opposition; where possible, sustainable economic opportunities should be established for local communities, and especially where communities/regions are challenged economically.

A strong case has been made for the potential net economic benefits of the trial, based on a desk-top Cost Benefit Analysis modelling approach conducted by AECOM.

5.2.7. Some species are subject to multiple conservation translocations: In these situations, inter-project, inter-regional or international communication

Good lines of communication were established with other European countries where lynx are present (e.g. the Harz mountains project and Sweden, the proposed

forms of communication. Lack of continuity of personnel would tend to undermine this process so a familiar team should be established for the long term to combat this.

Further data collection and engagement activities should be undertaken to ensure that all concerns have been uncovered, to understand how concerns can be adequately met, or whether there are opportunities for negotiation, and that stakeholders have been fully involved in the development of key project areas. Primary areas identified to date include compensation and mitigation, welfare issues, exit measures and measures of success.

Based on the data collected, this is a key issue which needs to be addressed in ongoing consultation activities. The project needs to make a much stronger case to the local community, based on extensive ecological feasibility work, for how lynx will fit into the wider Kielder socio-ecological landscape. The theory of the 'landscape of coexistence' should be investigated as a possible mechanism for allaying concerns regarding human-lynx conflict.

This work requires further refinement specifically in relation to the Kielder socio-economic landscape. Linked to 5.2.3., this should include a greater focus on those most likely to be adversely affected. After this, such work must translate into genuine attempts to include targeted aspects in the project plan addressing this point.

Communication and sharing of experiences should continue, with the network widening to include further knowledge and skills.

and collaboration are encouraged in the interests of making best use of resources and experiences for attaining translocation goals and effective conservation.

5.2.8. Organizational aspects can also be critical for translocation success: Where multiple bodies, such as government agencies, non-government organizations, informal interest groups (some of which may oppose a translocation) all have statutory or legitimate interests in a translocation, it is essential that mechanisms exist for all parties to play suitable and constructive roles. This may require establishment of special teams working outside formal, bureaucratic hierarchies that can guide, oversee and respond swiftly and effectively as management issues arise.

5.2.9. The multiple parties involved in most translocations have their own mandates, priorities and agendas; unless these are aligned through effective facilitation and leadership, unproductive conflict may fatally undermine translocation implementation or success

5.2.10. A successful translocation can contribute to a general ethical obligation to conserve species and ecosystems; but the conservation gain from the translocation should be balanced against the obligation to avoid collateral harm to other species, ecosystems or human interests; this is especially important in the case of a conservation introduction.

location for the source population), other UK conservation projects (e.g. the pine marten reinforcement project run by Vincent Wildlife Trust), and several academic institutions.

A national forum, targeting national stakeholder organisations, created a mechanism for sharing information and expertise. The intention was to create a similar local stakeholder forum open to any type of body or individual. Given the legal implications of the project there was a separate dialogue with the government as per 5.2.1.

Agreements were never formalized between project partner organizations, and it was disagreement over project governance that concluded in the cessation of consultation activities by the authors.

Data from the consultation highlights that ecological feasibility and impact on native wildlife and human interests are key concerns among the community. Detailed ecological and feasibility work was planned but remains incomplete to our knowledge.

The national stakeholder forum should continue, with concerted efforts to expand membership, as well as continued communication with governmental agencies. It is also important to ensure that those involved are objective and reasonable when dealing with a broad spectrum of interests and agendas.

Structure and governance of the project and/or the participating organisations should be transparent.

Detailed ecological feasibility and cost-benefit analyses specific to the proposed area should be completed and published and should inform project plans and any license application.