

Stevenson-Holt, Claire D. ORCID: <https://orcid.org/0000-0003-3635-5404> ,
Moseley, Darren, Ramsey, Andrew D. ORCID: <https://orcid.org/0000-0002-5550-9977> and Nevin, Owen ORCID: <https://orcid.org/0000-0003-3513-8053> (2008)
Modelling red squirrel population viability under a range of landscape scenarios
in a fragmented woodland ecosystem on the Solway Plain, Cumbria, UK. In:
Society for Conservation Biology Annual Meeting, 13-17 July 2008, The
University of Tennessee, Chattanooga, Tennessee, USA.

Downloaded from: <http://insight.cumbria.ac.uk/id/eprint/135/>

Usage of any items from the University of Cumbria's institutional repository 'Insight' must conform to the following fair usage guidelines.

Any item and its associated metadata held in the University of Cumbria's institutional repository Insight (unless stated otherwise on the metadata record) may be copied, displayed or performed, and stored in line with the JISC fair dealing guidelines (available [here](#)) for educational and not-for-profit activities

provided that

- the authors, title and full bibliographic details of the item are cited clearly when any part of the work is referred to verbally or in the written form
- a hyperlink/URL to the original Insight record of that item is included in any citations of the work
- the content is not changed in any way
- all files required for usage of the item are kept together with the main item file.

You may not

- sell any part of an item
- refer to any part of an item without citation
- amend any item or contextualise it in a way that will impugn the creator's reputation
- remove or alter the copyright statement on an item.

The full policy can be found [here](#).

Alternatively contact the University of Cumbria Repository Editor by emailing insight@cumbria.ac.uk.

Modelling red squirrel population viability under a range of landscape scenarios in a fragmented woodland ecosystem on the Solway Plain, Cumbria, UK.

C. D. Stevenson¹, D. Moseley², A. D. Ramsey¹ & O. T. Nevin¹

1. Centre for Wildlife Conservation, University of Cumbria, Newton Rigg Campus, Penrith, Cumbria, UK., CA11 0AH
2. Ecology Division, Forest Research, Northern Research Station, Roslin, Midlothian, UK., EH25 9SY

Introduction

The red squirrel *Sciurus vulgaris* (Figure 1) was once widely distributed throughout the UK. However, competition with the North American grey squirrel *S. carolinensis*, disease, habitat loss and habitat fragmentation are all thought to have led to the extinction of red squirrel populations in southern and central England and the decline in many other populations throughout the UK (Skelcher 1997).

The fragmented woodland ecosystem of the Solway Plain, in Northern Cumbria, still hold a small population of red squirrels. We assess the viability of this population and examine a range of landscape management scenarios.

Figure 1. Red squirrel



Methodology

Woodland usage and red squirrel population density was identified using Gurnell et al's (2001) distance sampling and hair tube methods.

A population viability analysis was undertaken using Vortex version 9.75 (Lacy et al. 2007) to assess the effects of dispersal upon the population.

Biological and Environmental Evaluation Tools for Landscape Ecology 'BEETLE' was used to evaluate the functional connectivity of the woodland fragments creating habitat networks.

The viability of each network was assessed using Vortex. The possibility of connecting habitat networks by adding additional woodland to the landscape matrix was modelled using BEETLE.

BEETLE modelling was used to assess potential grey squirrel movements and Outbreak (Pollak et al. 2002) disease modelling was used to assess the effects of the squirrel poxvirus (SQPV) upon viable populations.

Results

- Red squirrel usage was recorded in 5 of the woodland fragments (10, 13, 16, 21 and 23 in Figure 2).
- The population density was estimated to be 0.65 squirrels ha⁻¹.
- Dispersal between all woodland fragments was predicted to cause 100% probability of extinction using Vortex, based upon a maximum single dispersal distance of 4km (Table 1).

Figure 2 shows functional connectivity of woodland for the red squirrel using BEETLE, modelled at a dispersal distance of 4km. Dark green areas represent red squirrel habitat, light green areas represent potential dispersal areas. Functional networks are considered to be where the light green areas connect the habitat fragments. The dashed lines highlight the largest networks within the survey area.

Figure 2. BEETLE modelling of functional networks for red squirrel

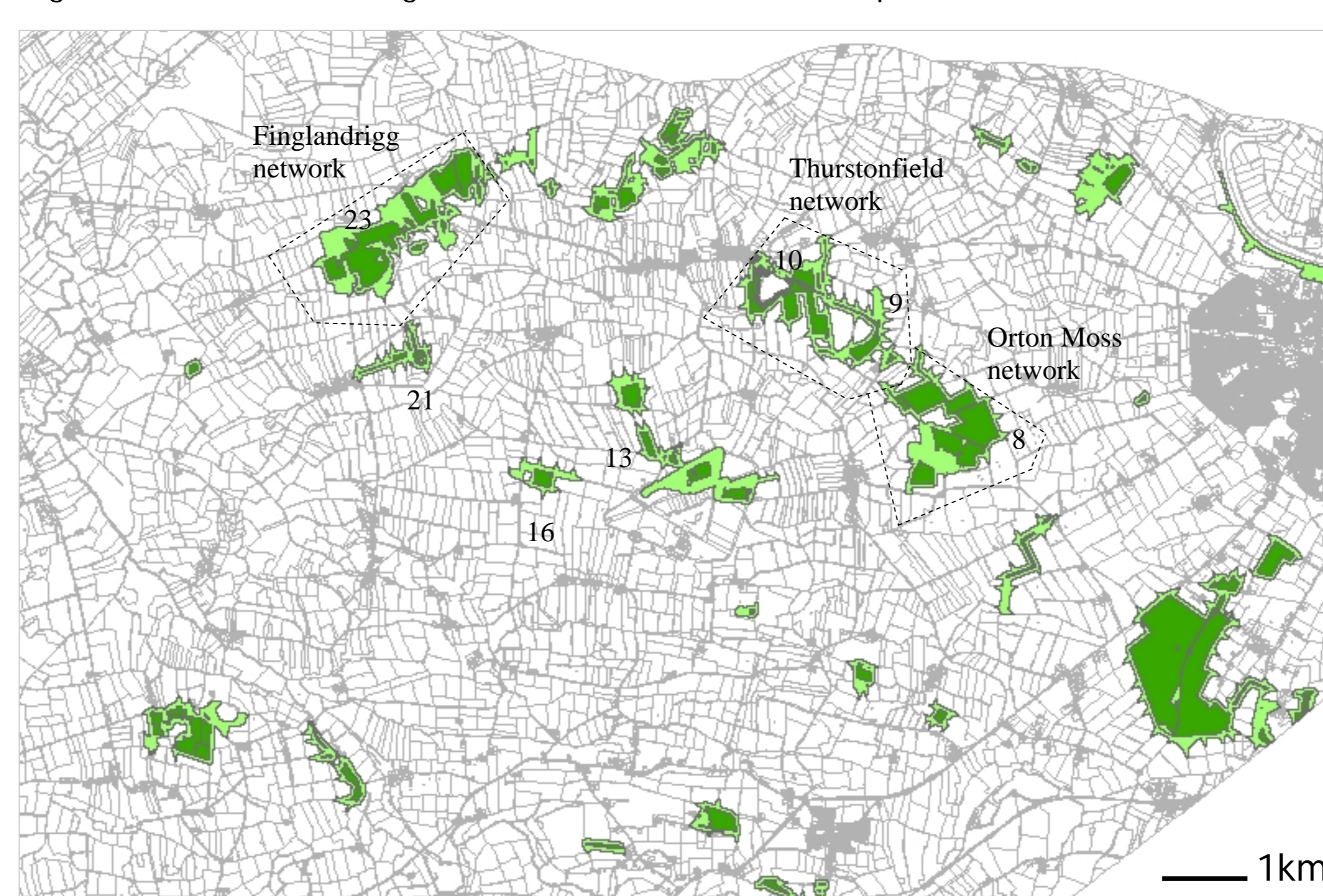


Table 1. Vortex PVA of networks

Scenario	Probability of extinction (under parameters used)
Using only fragments 23 of the Finglandrigg network	80 %
Using all 66ha of Finglandrigg network	13 %
Adding an additional 25ha to the Finglandrigg network (Minimum dynamic area for the Solway Plain is therefore calculated to be 91ha)	1 %
Using all of the Thurstonfield network	100 %
Connecting Thurstonfield to Orton Moss creating a network of 93.98ha	0 %

Figure 3 below shows potential functional connection of networks by including existing woodland which will be mature in 50 years and additional woodland fragments which, if planted now, will potentially aid in future red squirrel dispersal between networks (newly matured and new woodland shown in blue).

Figure 3. Proposed future habitat network for red squirrel.

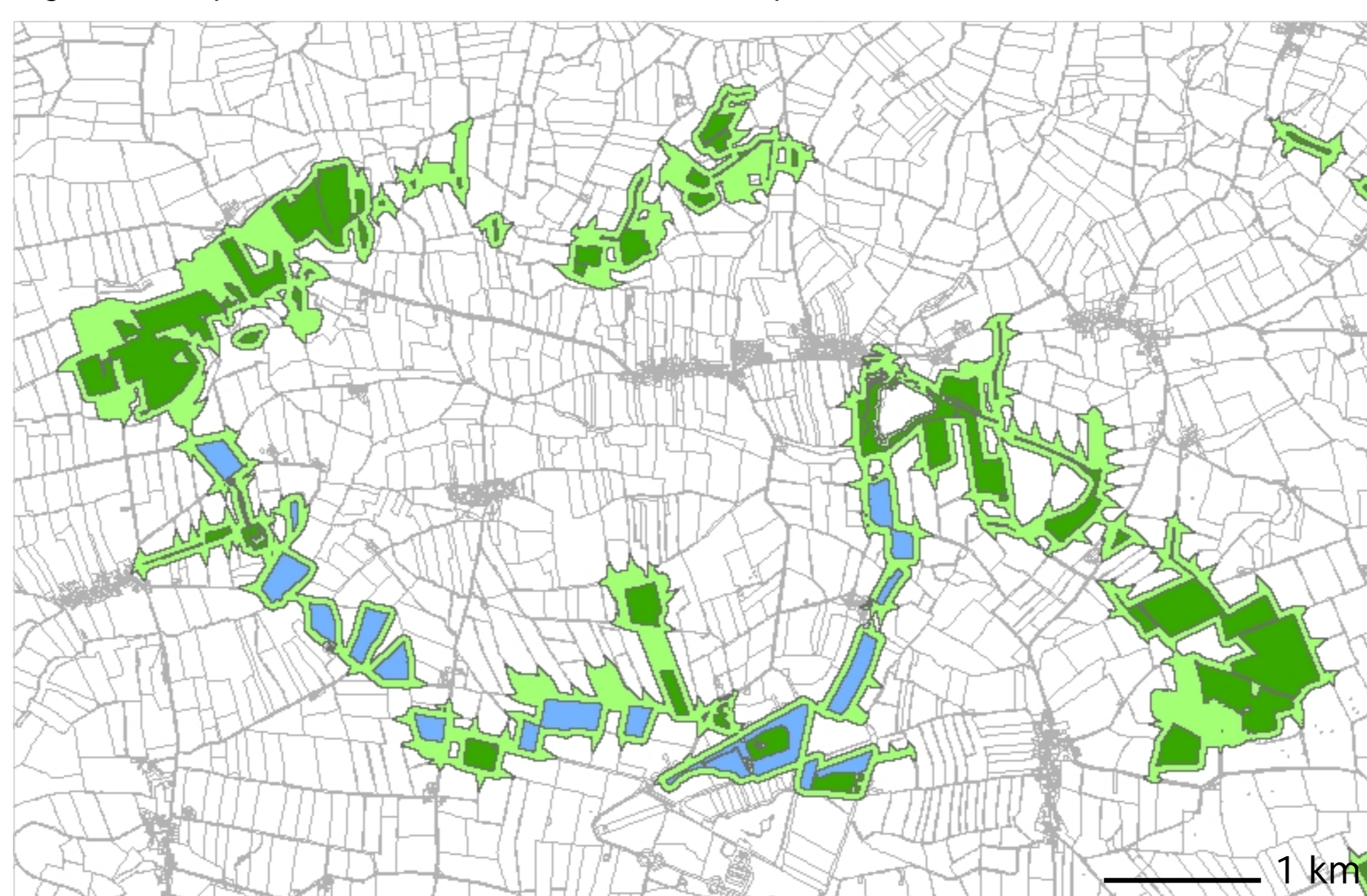
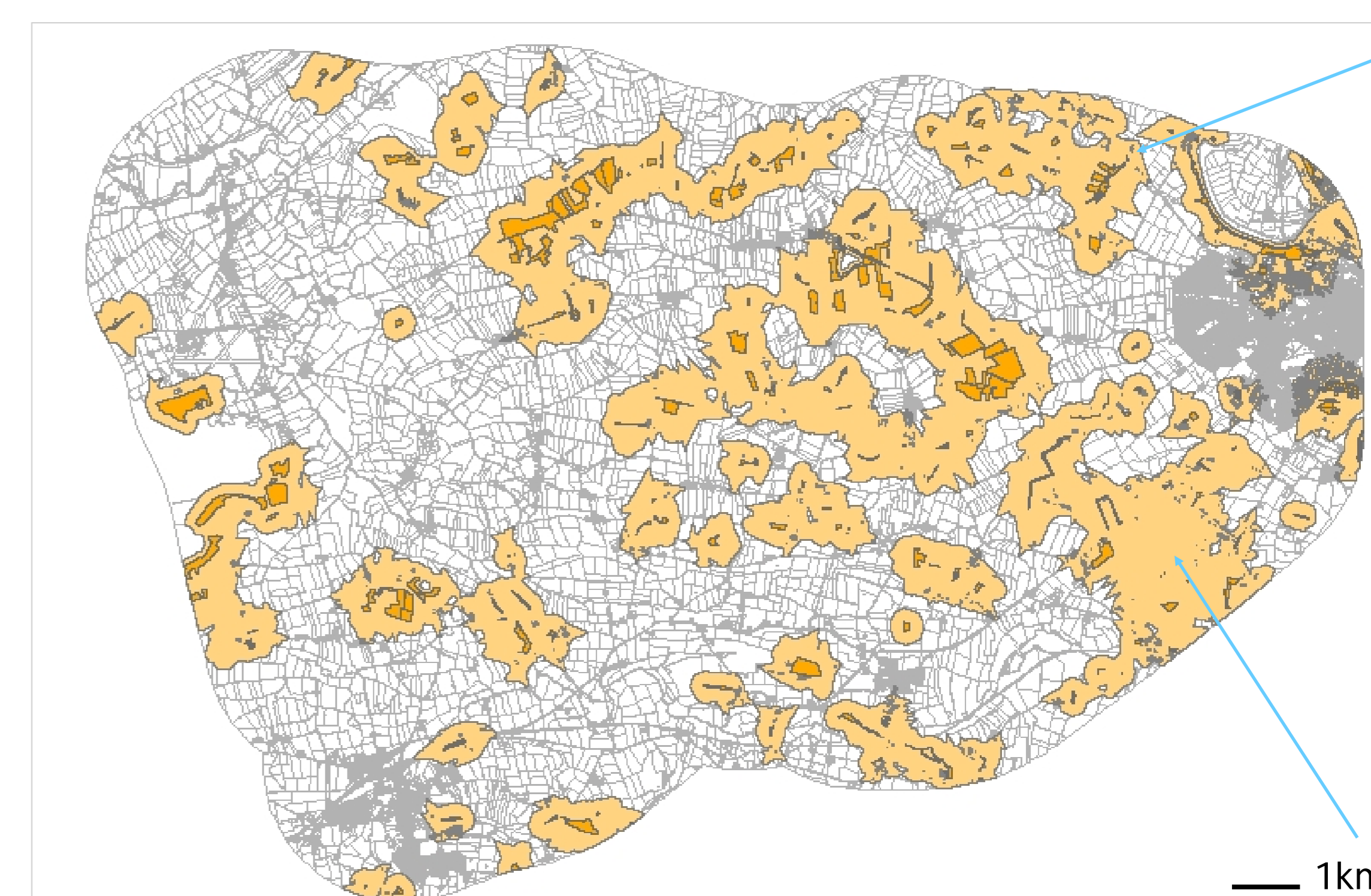


Figure 4 shows grey squirrel habitat networks created using BEETLE at a dispersal distance of 12km. Dark orange areas represent grey squirrel habitat. Functional networks are considered to be where the light orange areas connect the habitat fragments. The blue arrows represent the possible directions of grey squirrel colonization following the closed linked networks. These areas should be targeted for grey squirrel control.

Figure 4. Grey squirrel habitat network on the Solway Plain



- If the viable populations are exposed to the lethal SQPV the Outbreak modelling has shown both the Finglandrigg network and the connected Thurstonfield and Orton Moss networks would face extinction within one year.

Conclusions

- Modelling the functional connectivity of the woodland fragments on the Solway Plain revealed how highly isolated the woodlands are to the squirrel within this landscape matrix.
- The BEETLE modelling has indicated that squirrels are likely to commute less than 300m between woodland fragments; it is essential, therefore, that each woodland fragment within the networks are connected by land cover that does not hinder potential movement.
- As the MDA was calculated to be 91ha both the Finglandrigg and the joined Thurstonfield and Orton Moss networks will depend upon the red squirrels using the entire available habitat of the networks and small amounts of additional woodland to be viable.
- Planting additional woodland has the potential to functionally connect some networks to create one large network of >200ha however in doing so this would also aid in grey squirrel colonisation of the area increasing the risk of SQPV exposure.
- The two potentially viable networks need to be managed separately to increase red squirrel numbers and movements, whilst protecting these population from the incursion of the grey squirrel.

References

- Gurnell, J., P. W. W. Lurz and H. Pepper. 2001. Practical techniques for surveying and monitoring squirrels. Forestry Commission Practice Note 11. Forestry Commission, Edinburgh.
- Lacy, R.C., M. Borbat, and J.P. Pollak. 2007. VORTEX: A Stochastic Simulation of the Extinction Process. Version 9.50. Brookfield, IL: Chicago Zoological Society
- Pollak, J. P., P. Miller, B. Lacy, L. Hungerford and P. Bright. 2002. Outbreak. Version 0.99BETA. Conservation Breeding Specialist Group (SSC/IUCN).
- Skelcher, G. 1997. The ecological replacement of red by grey squirrels. Pages 67-78 in J. Gurnell and P. Lurz, editors. The conservation of red squirrels *Sciurus vulgaris* L. People's Trust for Endangered Species, London.

Acknowledgements

This research was funded by the Peoples Trust for Endangered Species (Formally known as Mammals Trust UK). Use of the BEETLE software supported by Forest Research. Landscape permeability scores from Alice Broome and the Scottish Red Squirrel Group. Red and Grey squirrel sighting records from Steven Hewitt at Tullie House Museum and Art Gallery.



people's trust for endangered species | mammals