

Essa, Hani ORCID: <https://orcid.org/0000-0001-9445-2582> , Walker, Lauren, Mohee, Kevin ORCID: <https://orcid.org/0000-0002-7409-7197> , Oguguo, Chukwuemeka, Douglas, Homeyra, Kahn, Matthew, Rao, Archana, Bellieu, Julie, Hadcroft, Justine, Hartshorne-Evans, Nick, Bliss, Janet, Akpan, Asangaedem ORCID: <https://orcid.org/0000-0002-1764-8669> , Wong, Christopher, Cuthbertson, Daniel J. ORCID: <https://orcid.org/0000-0002-6128-0822> and Sankaranarayanan, Rajiv ORCID: <https://orcid.org/0000-0003-2355-2011> (2022) Multispecialty multidisciplinary input into comorbidities along with treatment optimisation in heart failure reduces hospitalisation and clinic attendance. *Open Heart*, 9 (2). e001979.

Downloaded from: <https://insight.cumbria.ac.uk/id/eprint/6521/>

Usage of any items from the University of Cumbria's institutional repository 'Insight' must conform to the following fair usage guidelines.

Any item and its associated metadata held in the University of Cumbria's institutional repository Insight (unless stated otherwise on the metadata record) may be copied, displayed or performed, and stored in line with the JISC fair dealing guidelines (available [here](#)) for educational and not-for-profit activities

provided that

- the authors, title and full bibliographic details of the item are cited clearly when any part of the work is referred to verbally or in the written form
 - a hyperlink/URL to the original Insight record of that item is included in any citations of the work
- the content is not changed in any way
- all files required for usage of the item are kept together with the main item file.





You may not

- sell any part of an item
- refer to any part of an item without citation
- amend any item or contextualise it in a way that will impugn the creator's reputation
- remove or alter the copyright statement on an item.

The full policy can be found [here](#).

Alternatively contact the University of Cumbria Repository Editor by emailing insight@cumbria.ac.uk.

openheart Multispecialty multidisciplinary input into comorbidities along with treatment optimisation in heart failure reduces hospitalisation and clinic attendance

Hani Essa ^{1,2}, Lauren Walker,^{3,4} Kevin Mohee ¹, Chukwuemeka Oguguo,¹ Homeyra Douglas,¹ Matthew Kahn,^{2,5} Archana Rao,^{2,5} Julie Bellieu,⁶ Justine Hadcroft,⁷ Nick Hartshorne-Evans,⁸ Janet Bliss,^{9,10} Asangaedem Akpan,^{2,11,12,13} Christopher Wong,^{2,14,15} Daniel J Cuthbertson ^{2,13,16}, Rajiv Sankaranarayanan ^{1,2,17}

► Additional supplemental material is published online only. To view, please visit the journal online (<http://dx.doi.org/10.1136/openhrt-2022-001979>).

To cite: Essa H, Walker L, Mohee K, *et al*. Multispecialty multidisciplinary input into comorbidities along with treatment optimisation in heart failure reduces hospitalisation and clinic attendance. *Open Heart* 2022;**9**:e001979. doi:10.1136/openhrt-2022-001979

Received 1 February 2022
Accepted 20 June 2022



© Author(s) (or their employer(s)) 2022. Re-use permitted under CC BY-NC. No commercial re-use. See rights and permissions. Published by BMJ.

For numbered affiliations see end of article.

Correspondence to

Dr Rajiv Sankaranarayanan;
Rajiv.Sankaranarayanan@liverpoolft.nhs.uk

ABSTRACT

Aims Heart failure (HF) is associated with comorbidities which independently influence treatment response and outcomes. This retrospective observational study (January 2020–June 2021) analysed the impact of monthly HF multispecialty multidisciplinary team (MDT) meetings to address management of HF comorbidities and thereby on provision, cost of care and HF outcomes.

Methods Patients acted as their own controls, with outcomes compared for equal periods (for each patient) pre (HF MDT) versus post-MDT (multispecialty) meeting. The multispecialty MDT comprised HF cardiologists (primary, secondary, tertiary care), HF nurses, nephrologist, endocrinologist, palliative care, chest physician, pharmacist, clinical pharmacologist and geriatrician. Outcome measures were (1) all-cause hospitalisations, (2) outpatient clinic attendances and (3) cost.

Results 334 patients (mean age 72.5±11 years) were discussed virtually through MDT meetings and follow-up duration was 13.9±4 months. Mean age-adjusted Charlson Comorbidity Index was 7.6±2.1 and Rockwood Frailty Score 5.5±1.6. Multispecialty interventions included optimising diabetes therapy (haemoglobin A1c-HbA1c pre-MDT 68±11 mmol/mol vs post-MDT 61±9 mmol/mol; $p<0.001$), deprescribing to reduce anticholinergic burden (pre-MDT 1.85±0.4 vs 1.5±0.3 post-MDT; $p<0.001$), initiation of renin-angiotensin aldosterone system inhibitors in HF with reduced ejection fraction (HFrEF) with advanced chronic kidney disease (9% pre vs 71% post-MDT; $p<0.001$). Other interventions included potassium binders, treatment of anaemia, falls assessment, management of chest conditions, day-case ascitic, pleural drains and palliative support. Total cost of funding monthly multispecialty meetings was £32 400 and resultant 64 clinic appointments cost £9600. The post-MDT study period was associated with reduction in 481 clinic appointments (cost saving £72150) and reduced all-cause hospitalisations (pre-MDT 1.1±0.4 vs 0.6±0.1 post-MDT; $p<0.001$), reduction of 1586 hospital bed-days and cost savings of £634 400. Total cost saving to the healthcare system was £664 550.

Conclusion HF multispecialty virtual MDT model provides integrated, holistic care across all healthcare tiers for

WHAT IS ALREADY KNOWN ON THIS TOPIC

Heart failure is associated with several comorbid health conditions (multimorbidity) which independently influence outcomes as well as response to treatment.

WHAT THIS STUDY ADDS

This study assesses the impact of multispecialty multimorbidity input into the management of comorbidities and thereby the effect on all-cause outcomes.

HOW THIS STUDY MIGHT AFFECT RESEARCH, PRACTICE OR POLICY

Results of this study illustrate that multispecialty management of comorbidities associated with heart failure, may not only improve all-cause outcomes but could also prove to be cost beneficial.

management of HF and associated comorbidities. This approach is associated with reduced clinic attendances and all-cause hospitalisations, leading to significant cost savings.

INTRODUCTION

Heart failure (HF) is a complex clinical syndrome, representing the final common pathway of many different pathological processes and associated with high mortality and frequent hospital admissions.¹ There are an estimated 64.3 million cases of HF worldwide.² This global burden is expected to increase due to an ageing population, with 80% of hospitalisations occurring in those aged >65 years.³ Significantly, hospitalisation in people with HF confers a poor prognosis with a 1-year mortality of 31%, 5-year mortality of 63% and 10-year mortality of 82% and these outcomes are worse in comparison to those who do not require hospitalisation.⁴

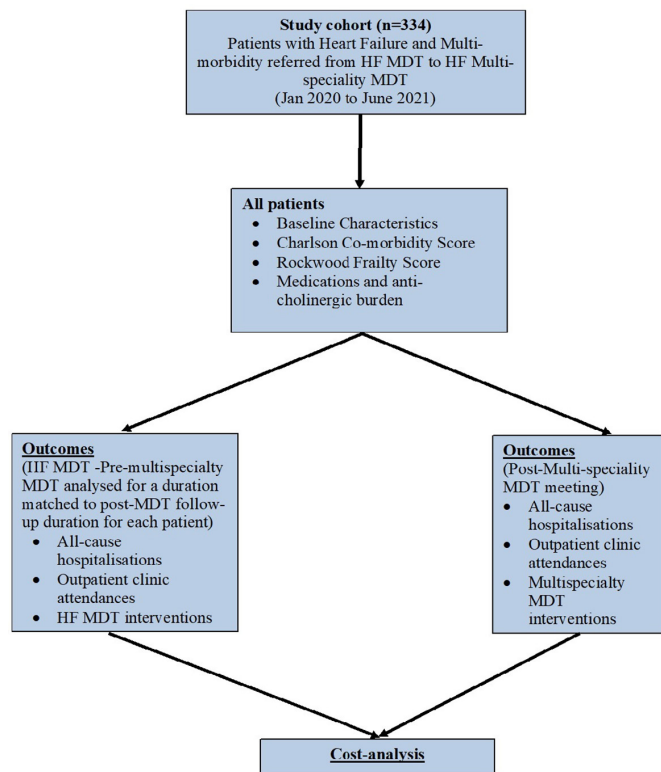


Figure 1 Study flow chart. HF, heart failure; MDT, heart failure.

HF is frequently characterised by multimorbidity (coexistence of two or more long-term conditions) and these comorbid conditions (long-term conditions) that can influence the management of HF and adversely affect outcomes. These other conditions include other cardiovascular diseases such as ischaemic heart disease (IHD), atrial fibrillation (AF) and hypertension and non-cardiovascular comorbidities such as chronic kidney disease (CKD) (41%), anaemia (37%), diabetes mellitus (type 1 or type 2) (DM-21%), chronic obstructive pulmonary disease (COPD) (24%), a burden of polypharmacy and frailty.^{5 6} Most people with HF have at least one comorbidity^{6 7} and up to 40% of patients with HF have ≥ 5 comorbidities (this group contributed to $>80\%$ of the overall in-hospital stay in one study).⁸ The number of comorbidities is higher among patients with HF with preserved ejection fraction (HFpEF) than in patients with HF with reduced ejection fraction (HFrEF) and with a more profound impact on outcomes.^{9–13} In addition, non-cardiac comorbidities independently affect response to treatment, influence disease severity and HF outcomes such as hospitalisation, quality of life and mortality.^{7 12–19} The burden of comorbidities is also progressively increasing with time.^{13 20} This level of multimorbidity and complexity can be most effectively managed by a multidisciplinary team (MDT), an approach endorsed by both the European Society of Cardiology (class 1A recommendation)²¹ and the American Heart Association (class 1B recommendation).²¹ However, there is little detail in the guidelines about the

composition or remit of such an MDT. There is also a dearth of evidence currently regarding whether management of comorbidities by relevant specialists in consultation with HF specialists can improve HF outcomes.

The aim of this study is to assess the impact of multi-speciality input on the optimisation of comorbidities, all-cause hospitalisations, outpatient clinic attendances and mortality in patients with HF.

METHODS

Study setting and time period

It was conducted as an observational retrospective cohort study in a British University teaching hospital, looking at the impact of a multi-speciality HF MDT meeting on care models and outcomes in a HF population. We studied outcomes of patients with HF and multimorbidity referred from the HF MDT to our monthly virtual multi-speciality meetings from January 2020 to June 2021 and followed up for equal amounts of time pre and post recruitment. [Figure 1](#) illustrates the study flow chart diagram. We followed the guidelines (The Strengthening the Reporting of Observational Studies in Epidemiology) for reporting observational studies.²²

Multi-speciality MDT meeting format

Prior to prior to January 2020, our HF MDT consisted of HF cardiologists and HF specialist nurses. Since January 2020, the new model of Liverpool Multi-speciality regional HF MDT meetings has been funded by Liverpool Single Services Cardio-respiratory Group (from Liverpool Clinical Commissioning Group) and Liverpool University Hospitals NHS Foundation Trust. The multi-speciality meeting is conducted monthly via videoconferencing. Sources of referral to the multi-speciality MDT include community HF teams, hospital HF teams (secondary and tertiary care) and other specialty teams, using a dedicated referral form (online supplemental file 2). The multi-speciality MDT consist of HF cardiologists from the community, secondary care and tertiary care, HF specialist nurses from the community and hospital, nephrologist, endocrinologist, palliative care specialist, chest physician, geriatrician, pharmacist and pharmacologist. Individualised discussions at the multi-speciality MDT meeting include optimisation of HF therapies, assessment of frailty, comorbidities, cardiorenal metabolic status, specialist input into any complex chronic respiratory pathologies, need for falls risk assessment, cognitive dysfunction, rationalisation of polypharmacy burden (particularly anticholinergic burden, ACB), medication compliance and need for advanced care planning discussions or community palliative care where appropriate. Recommendations are made as consensus from the multi-speciality meeting where each patient's case is discussed once. These are then conveyed electronically or through post to the referrers, the electronic record of each discussed

patient is also updated with these recommendations and the MDT consensus discussed with each patient.

Demographic and clinical details

We collected demographic data, comorbidities such as DM, hypertension, IHD, COPD or a pre-existing malignant condition and medication history as well as ACB (ACB which is the cumulative impact of using multiple medications with anticholinergic properties concomitantly). The ACB is calculated by identifying medications with anticholinergic properties and assigning a score between 1 and 3 according to the anticholinergic activity of the medication.²³ Furthermore, we computed the Charlson Comorbidity Index (CCI)²⁴ and the Rockwood clinical frailty score.²⁵ Patients were followed up for equal (matched) periods of time pre and post multi-specialty MDT meeting, so 'each patient acted as their own control' and the analysis compared outcomes during the HF MDT period vs those in the HF Multispecialty MDT period.

Outcome measures

Outcome measures assessed were all-cause hospitalisations and outpatient clinic attendances for an equal period pre and post multispecialty MDT meeting. We also assessed other measures such as advanced HF management (device therapy, transplant referrals), referrals to integrated palliative care services, burden of polypharmacy and cost analysis. Statistical comparisons were made for MDT interventions as well as outcomes, comparing the pre-multispecialty MDT ('HF MDT') with those of the multispecialty HF MDT time period, for matched durations.

Statistical analysis

For the descriptive statistics of our patient population, we represented continuous variables as means with SD or medians with interquartile ranges in the case of non-parametric data. Categorical variables were represented with percentages and analysed using χ^2 test. Statistical comparisons were made for parametric data using paired samples Student's t-test and for non-parametric data using Mann-Whitney test. Statistical analysis was carried out using the Statistical Package for the Social Sciences (SPSS V.23.0, IBM).

RESULTS

Demographic details

A total of 334 patients were discussed through virtual MDT meetings from January 2020 to June 2021. We collated baseline patient characteristics as illustrated in [table 1](#). This service model continued uninterrupted during the COVID-19 pandemic. The mean age of patients discussed was 72.5±11 years and follow-up duration was 13.9±4 months. Forty-three per cent of the patients discussed were female and 45% of patients had a diagnosis of HFpEF.

The mean age-adjusted Charlson Comorbidity Index was 7.6±2.1 and Rockwood Frailty Score was 5.5±1.6, indicating a mild to moderate degree of frailty. There was significant polypharmacy burden as indicated by the mean number of medications of 12.1±3.9 among the whole cohort.

As illustrated in [table 1](#), we also compared baseline characteristic and comorbidities based on EF, between

Table 1 Patient characteristics and comparison of 2 cohorts of patients—HFReEF/HFmrEF versus those with HFpEF

Patient characteristics	Total cohort (n=334)	HFReEF/ HFmrEF (n=184)	HFpEF (n=150)	P value (HFReEF vs HFpEF)
Age	72.5±11 years	71±9 years	74.5±11	0.001
Male:female	57%:43%	60%:40%	47%:53%	0.02
Ischaemic heart disease	124/334 (37%)	94/184 (51%)	30/150 (20%)	<0.001
Hypertension	164/334 (49%)	78/184 (42%)	86/150 (57%)	0.007
Diabetes mellitus	137/334 (41%)	72/184 (39%)	65/150 (43%)	0.43
Atrial fibrillation	127/334 (38%)	67/184 (36%)	60/150 (40%)	0.50
Valvular heart disease	60/334 (18%)	29/184	31/150	0.24
COPD/asthma/interstitial lung disease	103/334 (31%)	53/184 (29%)	50/150 (33%)	0.37
CKD	177/334 (53%)	81/184 (44%)	96/150 (64%)	<0.001
Cerebrovascular disease (CVA or previous TIA)	43/334 (13%)	22/184 (12%)	21/150 (13%)	0.6
Cancer	23/334 (7%)	15/184 (8%)	8/150 (5%)	0.3
Dementia	27/334 (8%)	16/184 (8%)	11/150 (7%)	0.5
Charlson Comorbidity Index	7.6±2.1	7.4±2	7.9±2.2	0.03
Rockwood Frailty Score	5.5±1.6	5.4 1.5	5.7±1.7	0.06

CKD, chronic kidney disease; COPD, chronic obstructive pulmonary disease; CVA, cerebrovascular accident; HFmrEF, heart failure with mildly reduced ejection fraction; HFpEF, heart failure with preserved ejection fraction; HFReEF, heart failure with reduced ejection fraction; TIA, transient ischaemic attack.

two groups (HF_rEF and heart failure with mildly reduced ejection fraction (HF_mrEF) vs HF_pEF). The HF_pEF group was older, consisted of more women, had a lower prevalence of IHD and higher prevalence of hypertension and CKD. The HF_pEF group also had a significantly higher Charlson Comorbidity Index and showed a trend towards greater frailty (although this was not statistically significant).

Clinical recommendations

Medicines optimisation

Consensus recommendation was made from the MDT regarding optimisation of prognostic medications. [Table 2](#) details the medicines optimisation recommendations from the multi-specialty MDT meetings. This included initiation or continuation of prognostic HF_rEF therapy such as ACE-inhibitor/angiotensin receptor blocker-ARB in 32 patients with HF_rEF and CKD4 up to eGFR 20 mL/min/1.73 m². A higher number of patients were prescribed potassium binders to treat hyperkalaemia due to renin-angiotensin-aldosterone system inhibitor (RAASi) therapy (2 patients pre-MDT vs 13 patients post-MDT). These interventions contributed to a significant improvement in prescription of quadruple HF_rEF therapy (ACE inhibitor/ARB/angiotensin receptor neprilysin inhibitor, beta-blocker, mineralocorticoid receptor antagonist-MRA and sodium-glucose co-transporter2 inhibitor -SGLT2i) which increased from 46% pre-multispecialty MDT to 71% post-multispecialty MDT; $p < 0.001$.

SGLT2i addition was recommended for improved cardiorenal metabolic status in 91 patients with type 2 diabetes and HF. There was also a significant improvement in the HbA1c levels noted during the post-MDT period. As also detailed in [table 2](#), appropriate deprescribing of polypharmacy was also recommended in order to significantly reduce the ACB (ACB 1.85±0.4 pre-MDT vs ACB 1.5±0.3 post-MDT). It is likely that this intervention contributed to the significant reduction of hospitalisations due to adverse drug reactions (12% pre-MDT to 5% post MDT; $p = 0.003$).

Advanced HF therapies

(53/334–16%) patients underwent internal cardioverter-defibrillator (ICD-26/53 patients) or cardiac resynchronisation therapy (CRT-14 patients) pacemaker implant (13 patients underwent CRTD) as a result of consensus recommendations from the multispecialty MDT and 11/334 (3%) patients were referred for transplant assessment. (16/334). The proportion of patients who underwent device therapy or advanced HF therapy referrals, was similar in numbers in the two study periods.

Other recommendations

Treatment of anaemia improved (24% pre-Multispecialty MDT vs 5% post-MDT; $p < 0.001$) though prescription of intravenous iron instead of oral iron, erythropoietin, folic acid and vitamin B₁₂ supplements where indicated.

Five per cent of patients were referred to dialysis assessment clinics and 10 patients were instituted on dialysis. Nine per cent of patients were referred to the falls assessment clinic (7 patients referred pre-multispecialty MDT and 23 patients post-multispecialty MDT. As also demonstrated in [table 2](#), the post-multispecialty MDT period was associated with a higher proportion of patients who underwent investigations and treatment optimisation for chronic obstructive airway disease, drain of pleural effusion and new diagnosis of sleep apnoea. Of 334, 37 (11%) patients required community palliative care, 9 of these patients required admission to a hospice and 11 patients required deactivation of their ICD as a part of advanced care planning palliative care. Overall mortality of this cohort during follow-up was 21% (70/334).

Hospitalisations

As shown in [figure 2](#), the number of all-cause hospitalisations was reduced significantly from 371 hospitalisations (4126 bed-days) pre-MDT to 205 post-MDT (2540 bed-days) (pre-MDT 1.1±0.4 vs .6±0.2 post MDT; $p < 0.001$), leading to a saving of 1586 bed-days and estimated cost saving £634 400 (average cost per bed day £400.²⁶ As also shown [table 1](#), these significant reductions in hospitalisation were seen irrespective of ejection fraction.

We performed further analysis of the cause of these hospitalisations (with regards to the aetiology of hospitalisation) as well as the effect of the multispecialty MDT based on the aetiology. In the pre-MDT period, 211 out of 371 hospitalisations (57% and 1900 bed-days) were due to HF and the remaining 160 hospitalisations (43% and 2226 bed-days) due to other causes ('non-HF').

In the post-MDT period, there were 135 hospitalisations due to HF (36% reduction; $p = 0.03$ and contributed to 1273 bed-days). In this same period, there were 70 hospitalisations due to non-HF causes (55% reduction; $p = 0.04$ and contributed to 1267 bed-days). [Figure 3](#) illustrates the various non-HF causes of hospitalisation in people with HF and shows a significant reduction in hospitalisation post-MDT in these conditions. The non-HF causes of hospitalisations included cardiac (IHD, AF, valve disease), renal (acute kidney injury or electrolyte imbalances), chest (exacerbation of lung disease such as COPD/asthma, pleural effusion), diabetes (hypoglycaemia/hyperglycaemia, infected ulcer), adverse drug reactions, social reasons/need for palliative support and other reasons (eg, surgical conditions).

Outpatient attendances

The number of outpatient clinic attendances reduced in the post-MDT meeting was 534. There were 946 outpatient appointments pre-MDT meeting and 465 appointments post-MDT. There was a 51% reduction in HF appointments (481 pre vs 242) post and 55% reduction in non-HF appointments (465 vs 223). Further analysis of the non-HF appointments (shown in [table 3](#)) revealed that there were reductions in the majority of causes of outpatients clinic appointments (cardiac, renal, diabetes,

Table 2 Treatment optimisation and other interventions at multispecialty MDT meeting

Condition	Medicines optimisation	Premultispecialty MDT	Postmultispecialty MDT	P value
Heart failure	1. Quadruple therapy in HFrEF	65/141 patients (46%)	101/141 patients (71%)	<0.001
	2. ICD	12 patients	14 patients	NS
	3. CRT+-D	13 patients	14 patients	NS
	4. Advanced HF referral	5 patients	6 patients	NS
CKD	1. Initiation of ACEi/ARB in patients with HFrEF and CKD4 (up to eGFR 20 mL/min/1.73 m ²)	4/45 (9%)	32/45 (71%)	<0.001
	2. Potassium binder therapy for hyperkalaemia due to RAASI therapy	2 patients	13 patients	
Type 2 diabetes	1. Stopping or reducing dose of sulphonylureas and starting SGLT2i (42 patients)	<u>HbA1c control</u>		
		68±11 (mmol/mol)	61±9 (mmol/mol)	<0.001
	2. Switching from DPP4 inhibitor to SGLT2i (33 patients)			
	3. Adding SGLT2i to Insulin (19 patients)			
Adverse drug reactions				
1. Falls	1. Reduction in anticholinergic burden by deprescribing medications such as anti-histamines (17 patients), Nitrate substituted for Ivabradine or ranolazine (6 patients)	<u>ACB</u> 1.85±0.4	1.5±0.3	<0.001
		<u>Hospital admissions</u> 41/334 (12%)	18/334 (5%)	0.003
2. Bleeding	2. Switching from dual-antiplatelet to single-anti-platelet therapy or stopping anti-platelet when used in combination with anticoagulant (17 patients)			
3. Delirium/acute confusional state	Reduction in or stopping antimuscarinic drugs such as Oxybutynin (9 patients), anti-histamine (17 patients), opioid analgesia (21 patients), sedative drugs (9 patients) and antispasmodics			
4. Reduction in risk of C.difficile infection	Stopping H2 antagonist of proton pump inhibitor in absence of clear indication (proven peptic ulcer, gastrointestinal bleeding or dyspepsia (41 patients)			
Optimising management of chest conditions	1. Referral for spirometry and optimising inhalers	9/103 (9%)	38/103 (37%)	<0.001
	2. Pleural effusion drain	2 patients	9 patients	NA
	3. New diagnosis of sleep apnoea	6 patients	17 patients	NA
Referral to community falls assessment clinic		7 patients	23 patients	NA
Advanced care planning and palliation	Non-essential medications stopped	12 patients	37 patients	NA
Anaemia	Stopping oral iron, administration of intravenous iron, erythropoietin, folic acid or vitamin B ₁₂	<u>Persisting anaemia</u> 81/334 (24%)	18/334 (5%)	<0.001

ACB, anticholinergic burden; ARB, angiotensin receptor blocker; CRT, cardiac resynchronisation therapy; CRT, cardiac resynchronisation therapy; HFrEF, heart failure with reduced ejection fraction; ICD, internal cardioverter-defibrillator; MDT, multidisciplinary team; RAASI, renin-angiotensin-aldosterone system inhibitor; SGLT2i, sodium-glucose co-transporter2 inhibitor.

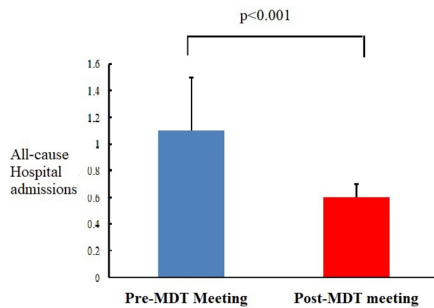


Figure 2 Comparison of all-cause hospitalisations premultispecialty and postmultispecialty MDT meeting. MDT, multidisciplinary team.

chest, geriatric, cerebrovascular and other causes but an increase in clinical appointments for falls clinic and palliative clinic. This reduced inconvenience to patients and also potentially saved patients money. This includes avoidance of need for travel as well as waiting time in clinic (average 51.3 minutes),²⁷ transport and parking costs (average saving of £5.52 per patient per appointment by car and £4.60 by bus).²⁸ There was also the added positive environmental impact through carbon footprint reduction (in this study 554 kgCO₂).

Economic analysis

We also performed an economic analysis of the impact of the virtual multispecialty MDT. This is also illustrated in table 4. The total cost of funding the multispecialty MDT meeting was 0.5 programmed activity NHS rates²⁹ per specialty (£1800 per meeting and £32 400 for the duration of the study (January 2020–June 2021). The 64 clinic appointments that generated as a result of recommendations from the multispecialty MDT meetings cost an estimated £9600 (£150 per outpatient clinic.²⁶ However, the MDT meetings were also associated with a reduction in 534 clinic appointments (cost saving £80 100). As detailed above, a reduction in all-cause hospitalisations in the post-MDT period was associated with a saving of 1586 bed-days and estimated cost saving £634 400. As shown in table 4, the total saving to the healthcare system was £664 550.

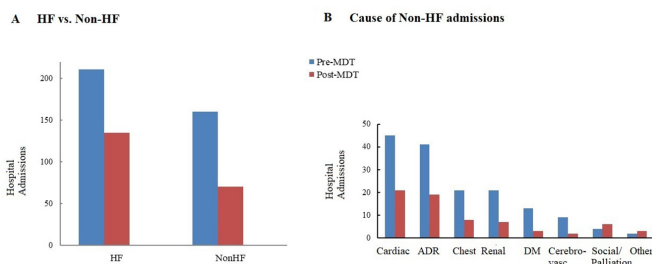


Figure 3 Comparison of hospitalisation premultispecialty and postmultispecialty MDT based on causes. DM, diabetes mellitus; HF, heart failure; MDT, multidisciplinary team; ADR, Adverse Drug Reaction

Table 3 Comparison of OPD appointments premultispecialty and postmultispecialty MDT meeting

OPD appointments	Pre-MDT (465)	Post-MDT (223)	% Change
Cardiac -	122	51	-62
Renal	93	41	-56
Diabetes	57	31	-46
Chest	49	12	-75
Geriatric	48	11	-73
Neuro/stroke	21	9	-57
Falls	32	35	+9
Palliative	23	31	+39
Other	20	2	-90

MDT, multidisciplinary team; OPD, outpatients department.

DISCUSSION

Several previous studies have shown the coexistence and adverse impact of multimorbidity in patients with HF. However, this is the first study to demonstrate that multispecialty, multidisciplinary management of comorbidities with integration of community, secondary and tertiary care HF specialists, is associated with reduced all-cause hospitalisations and outpatient clinic attendances (HF and non-HF) in people with HF irrespective of the ejection fraction. The multispecialty MDT also optimised the care of multiple comorbidities and facilitated timely involvement of relevant specialties.

It is important to focus on the management of multimorbidity along with the management of HF itself. Other studies have demonstrated that HF contributes to a smaller proportion of the burden of hospitalisation (less than 20%), non-cardiovascular causes contribute to more than 60% of the burden of hospitalisations.^{5 30} Small studies (randomised and observational) have shown that treatment of individual comorbidities such as sleep apnoea,³¹ anaemia,³² AF³³ and obesity,³⁴ can reduce hospitalisation and mortality in HF patients. Our study has also shown that multispecialty input into comorbidities and treatment optimisation can lead to a significant reduction in hospitalisations due to non-HF causes. A focus on management of comorbidities is relevant for all types of HF, but particularly for HFpEF in which there is a higher burden of comorbidities as shown by the significantly higher Charlson Comorbidity Index in this cohort of patients. In patients with HFpEF, only SGLT2 inhibitors have recently been demonstrated to lead to a reduction in the composite outcome of cardiovascular death or hospitalisation.³⁵ Additionally, while quadruple therapy and devices can significantly improve outcomes in people with HFpEF, coexistence of multimorbidity such as CKD may deter clinicians from prescribing prognostic RAASi therapy and a multispecialty MDT can help improve prescription of this class of medications which

Table 4 Economic analysis—healthcare savings

	Expenditure	Saving
Funding of specialties for MDT input (0.5 programmed activity NHS rates ²⁸ per specialty =£1800 per meeting)	£32 400	
Reduction in hospitalisations post-MDT (average cost per bed day £400 ²⁵)		Pre-MDT 1.1 vs post-MDT 0.6 (3490–1904=saving of 1586 bed-days =£634 400)
Outpatient clinic visits post-MDT (£150 per outpatient clinic ²⁵)	64 generated = £9600	Pre-MDT 946 appointments (£141 900) vs post-MDT 465 clinic appointments (£69 750)—cost saving £72 150)
	Total expenditure £42 000	Total saving £706 550
Total saving to the healthcare system = £664 550		

MDT, multidisciplinary team; NHS, national health service.

are evidence based for improved cardiorenal outcomes. Previous data from our centre have also demonstrated that a joint cardiorenal MDT meeting can reduce the need for further cardiology or renal outpatient follow-up in nearly 50% of patients.³⁶ However, there is significant variation and disparity in the management of HF and associated comorbidities depending on the geographical location of the patient and healthcare professional.³⁷ Specialists frequently focus on a single disease entity, potentially with a deleterious effect on other organ/systems (one such example is the occurrence of worsening renal function in patients with HF_{rEF} during decompensated HF, prompting cessation of RAASi therapy and in turn leading to worsening HF outcomes).

Disease management programmes incorporating MDT input from dietician, social worker, physical therapist and pharmacist have shown a significant reduction in 30-day readmissions rates,³⁸ however, we note the variable definition of the constitution of a HF MDT and the variable effects of MDT input into HF outcomes.³⁹ Members of the MDT have included HF specialist nurses, HF consultants, pharmacists, dieticians, social care workers, physiotherapists, palliative care specialists and psychologists. The largest study of MDT intervention (Co-ordinating study evaluating Outcomes of Advising and Counselling

in Heart failure (COACH) study) showed neutral outcomes in terms of HF hospitalisations or mortality.⁴⁰ It is possible that the lack of specialist input into intensive management of comorbidities may have diluted the wide-ranging beneficial effects of MDT input. The strategy of incorporation of other specialists (nephrologist, diabetologist, geriatrician, chest physician, pharmacist, palliative care) to address comorbidities simultaneously along with HF specialists, is novel and timely, particularly considering the cardiac, renal and metabolic impact of HF therapies such as the SGLT2 inhibitors. Our study has also shown that incorporation of a pharmacist as well as clinical pharmacist in the MDT, can help with reduction in ACB due to polypharmacy and the associated deleterious effects. This intervention was associated with a significant reduction in hospitalisations due to adverse drug reactions.

Our service model (figure 4) exemplifies individualised, patient-centric, holistic care using a consensus multispecialty approach targeted to the management of HF and comorbidities jointly. The need to address and manage comorbidities frequently prompts referral to other specialty outpatient clinics. Repeated outpatient clinic attendances are inconvenient to otherwise frail and often less mobile patients. Frailty in people with HF is an important determinant of outcomes⁴¹ and our study has shown that people with HF can have associated mild to moderate degree of frailty. We have demonstrated that a virtual multispecialty MDT is associated with savings of time, travel and cost and a significant reduction in inter-specialty referrals/outpatient clinic attendances, thereby of particular benefit for people with frailty and HF.

Virtual MDT clinics have been particularly relevant during the COVID-19 pandemic when this particularly vulnerable cohort prefer to avoid travel and minimise the risk of hospital-acquired infection (findings supported by our national HF patient survey regarding the impact of the COVID-19 pandemic on HF services).⁴² Our virtual multispecialty MDT model importantly ensured that

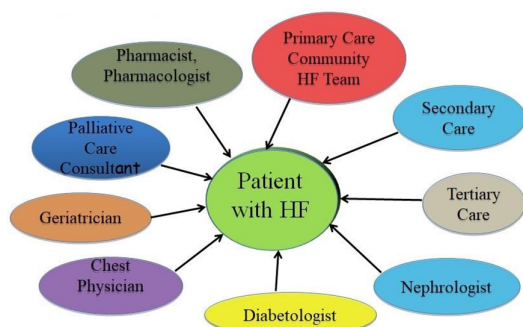


Figure 4 Integrated multispecialty MDT model illustrating the team members involved in the MDT meetings. HF, heart failure; MDT, multidisciplinary team.

the management of patients with HF continued uninterrupted throughout the COVID-19 pandemic, while minimising the need for patients to attend face-to-face outpatient clinic appointments.

We acknowledge limitations of this study including the observational nature; the efficacy of this service model maybe be best evaluated through a randomised controlled trial. Limitations of the virtual MDT approach also include the potential for miscommunication in view of lack of patient presence during the meeting. This was minimised by spoken and written discussions with the patient prior to and subsequent to the meeting. The model requires robust service planning to ensure attendance of multiple specialists and members of the MDT.

In conclusion, we demonstrate that an integrated and virtual multidisciplinary input is associated with improved HF outcomes through a reduction in all-cause hospitalisations and clinic attendances and is not only patient-centred but also cost-effective. Application of this model could be considered the gold-standard approach in addressing multimorbidity in patients with HF, however, this will need to be validated through assessment in a randomised study comparing outcomes from a HF MDT versus multispecialty MDT in addition to HF MDT.

Author affiliations

- ¹Cardiology, Liverpool University Hospitals NHS Foundation Trust, Liverpool, UK
- ²Liverpool Centre for Cardiovascular Science, University of Liverpool, Liverpool, UK
- ³Pharmacology, Liverpool University Hospitals NHS Foundation Trust, Liverpool, UK
- ⁴Clinical Pharmacology and Therapeutics, University of Liverpool, Liverpool, UK
- ⁵Cardiology, Liverpool Heart and Chest Hospital, Liverpool, UK
- ⁶Palliative Medicine, Liverpool University Hospitals NHS Foundation Trust, Liverpool, UK
- ⁷Respiratory Medicine, Liverpool University Hospitals NHS Foundation Trust, Liverpool, UK
- ⁸CEO and Founder, The Pumping Marvellous Foundation (Patient-Led Heart Failure Charity), Preston, UK
- ⁹Chair, NHS Liverpool Clinical Commissioning Group, Liverpool, UK
- ¹⁰GP Senior Partner, Grey Road Surgery, Liverpool, UK
- ¹¹Institute of Health, University of Cumbria, Cumbria, UK
- ¹²Geriatrics, Liverpool University Hospitals NHS Foundation Trust, Liverpool, UK
- ¹³Faculty of Health and Life Science, University of Liverpool, Liverpool, UK
- ¹⁴Nephrology, Liverpool University Hospitals NHS Foundation Trust, Liverpool, UK
- ¹⁵School of Health and Sport Sciences, Liverpool Hope University, Liverpool, UK
- ¹⁶Diabetes and Endocrinology, Liverpool University Hospitals NHS Foundation Trust, Liverpool, UK
- ¹⁷NIHR Research Scholar, NIHR CRN North West Coast, National Institute for Health and Care Research (NIHR), Liverpool, UK

Twitter Matthew Kahn @cardiologyMCR and Rajiv Sankaranarayanan @DrRajivsankar

Acknowledgements Heart Failure Specialist Nurses (Aintree University Hospital, Community Heart Failure Team and LHCH)

Contributors HE: data collection, data analysis and interpretation, drafting the article, critical revision of the article, final approval of the version to be published. LW; critical revision of the article, final approval of the version to be published. KM: data collection, data analysis and interpretation, critical revision of the article, final approval of the version to be published. EO: critical revision of the article, final approval of the version to be published. HD: critical revision of the article, final approval of the version to be published. MK: critical revision of the article, final approval of the version to be published. AR: critical revision of the article, final approval of the version to be published. JB: critical revision of the article, final approval of the version to be published. JH: critical revision of the article, final approval of the version to be published.

approval of the version to be published. NH-E: critical revision of the article, final approval of the version to be published. JB: critical revision of the article, final approval of the version to be published. AA: critical revision of the article, final approval of the version to be published. CW: critical revision of the article, final approval of the version to be published. DC: critical revision of the article, final approval of the version to be published. RS: conception or design of the work, data collection, data analysis and interpretation, drafting the article, critical revision of the article, final approval of the version to be published, and responsible for the overall content as guarantor.

Funding The MDT meetings are funded by the Liverpool Single Services Cardio-Respiratory Operation Group, Liverpool Clinical Commissioning Group and Liverpool University Hospitals NHS Foundation Trust.

Competing interests None declared.

Patient consent for publication Not applicable.

Provenance and peer review Not commissioned; externally peer reviewed.

Data availability statement Data are available on reasonable request.

Supplemental material This content has been supplied by the author(s). It has not been vetted by BMJ Publishing Group Limited (BMJ) and may not have been peer-reviewed. Any opinions or recommendations discussed are solely those of the author(s) and are not endorsed by BMJ. BMJ disclaims all liability and responsibility arising from any reliance placed on the content. Where the content includes any translated material, BMJ does not warrant the accuracy and reliability of the translations (including but not limited to local regulations, clinical guidelines, terminology, drug names and drug dosages), and is not responsible for any error and/or omissions arising from translation and adaptation or otherwise.

Open access This is an open access article distributed in accordance with the Creative Commons Attribution Non Commercial (CC BY-NC 4.0) license, which permits others to distribute, remix, adapt, build upon this work non-commercially, and license their derivative works on different terms, provided the original work is properly cited, appropriate credit is given, any changes made indicated, and the use is non-commercial. See: <http://creativecommons.org/licenses/by-nc/4.0/>.

ORCID iDs

Hani Essa <http://orcid.org/0000-0001-9445-2582>
 Kevin Mohee <http://orcid.org/0000-0002-7409-7197>
 Daniel J Cuthbertson <http://orcid.org/0000-0002-6128-0822>
 Rajiv Sankaranarayanan <http://orcid.org/0000-0003-2355-2011>

REFERENCES

- 1 Rathi S, Deedwania PC. The epidemiology and pathophysiology of heart failure. *Med Clin North Am* 2012;96:881–90.
- 2 GBD 2017 Disease and Injury Incidence and Prevalence Collaborators. Global, regional, and national incidence, prevalence, and years lived with disability for 354 diseases and injuries for 195 countries and territories, 1990–2017: a systematic analysis for the global burden of disease study 2017. *Lancet* 2018;392:1789–858.
- 3 Laribi S, Aouba A, Nikolaou M, *et al.* Trends in death attributed to heart failure over the past two decades in Europe. *Eur J Heart Fail* 2012;14:234–9.
- 4 Taylor CJ, Ordóñez-Mena JM, Roalfe AK, *et al.* Trends in survival after a diagnosis of heart failure in the United Kingdom 2000–2017: population based cohort study. *BMJ* 2019;364:l223.
- 5 Dunlay SM, Redfield MM, Weston SA, *et al.* Hospitalizations after heart failure diagnosis a community perspective. *J Am Coll Cardiol* 2009;54:1695–702.
- 6 van Deursen VM, Urso R, Laroche C, *et al.* Co-Morbidities in patients with heart failure: an analysis of the European heart failure pilot survey. *Eur J Heart Fail* 2014;16:103–11.
- 7 Gimeno-Miguel A, Gracia Gutiérrez A, Poblador-Plou B, *et al.* Multimorbidity patterns in patients with heart failure: an observational Spanish study based on electronic health records. *BMJ Open* 2019;9:e033174.
- 8 Braunstein JB, Anderson GF, Gerstenblith G, *et al.* Noncardiac comorbidity increases preventable hospitalizations and mortality among Medicare beneficiaries with chronic heart failure. *J Am Coll Cardiol* 2003;42:1226–33.
- 9 Chamberlain AM, St Sauver JL, Gerber Y, *et al.* Multimorbidity in heart failure: a community perspective. *Am J Med* 2015;128:38–45.
- 10 Mentz RJ, Kelly JP, von Lueder TG, *et al.* Noncardiac comorbidities in heart failure with reduced versus preserved ejection fraction. *J Am Coll Cardiol* 2014;64:2281–93.

- 11 Dunlay SM, Roger VL, Redfield MM. Epidemiology of heart failure with preserved ejection fraction. *Nat Rev Cardiol* 2017;14:591–602.
- 12 Bhatt AS, Ambrosy AP, Dunning A, et al. The burden of non-cardiac comorbidities and association with clinical outcomes in an acute heart failure trial - insights from ASCEND-HF. *Eur J Heart Fail* 2020;22:1022–31.
- 13 Pandey A, Vaduganathan M, Arora S, et al. Temporal trends in prevalence and prognostic implications of comorbidities among patients with acute decompensated heart failure: the ARIC study community surveillance. *Circulation* 2020;142:230–43.
- 14 Cubbon RM, Gale CP, Kearney LC, et al. Changing characteristics and mode of death associated with chronic heart failure caused by left ventricular systolic dysfunction: a study across therapeutic eras. *Circ Heart Fail* 2011;4:396–403.
- 15 Horiuchi Y, Tanimoto S, Latif AHMM, et al. Identifying novel phenotypes of acute heart failure using cluster analysis of clinical variables. *Int J Cardiol* 2018;262:57–63.
- 16 Manemann SM, Chamberlain AM, Roger VL, et al. Multimorbidity and functional limitation in individuals with heart failure: a prospective community study. *J Am Geriatr Soc* 2018;66:1101–7.
- 17 Joyce E, Chung C, Badloe S, et al. Variable contribution of heart failure to quality of life in ambulatory heart failure with reduced, better, or preserved ejection fraction. *JACC Heart Fail* 2016;4:184–93.
- 18 Lawson CA, Solis-Trapala I, Dahlstrom U, et al. Comorbidity health pathways in heart failure patients: a sequences-of-regressions analysis using cross-sectional data from 10,575 patients in the Swedish heart failure registry. *PLoS Med* 2018;15:e1002540.
- 19 Manemann SM, Chamberlain AM, Boyd CM, et al. Multimorbidity in heart failure: effect on outcomes. *J Am Geriatr Soc* 2016;64:1469–74.
- 20 Conrad N, Judge A, Tran J, et al. Temporal trends and patterns in heart failure incidence: a population-based study of 4 million individuals. *Lancet* 2018;391:572–80.
- 21 Ponikowski P, Voors AA, Anker SD, et al. 2016 ESC guidelines for the diagnosis and treatment of acute and chronic heart failure: the task force for the diagnosis and treatment of acute and chronic heart failure of the European Society of cardiology (ESC). developed with the special contribution of the heart failure association (HFA) of the ESC. *Eur J Heart Fail* 2016;18:891–975.
- 22 von Elm E, Altman DG, Egger M, et al. Strengthening the reporting of observational studies in epidemiology (STROBE) statement: guidelines for reporting observational studies. *BMJ* 2007;335:806–8.
- 23 Boustani M, Campbell N, Munger S, et al. Impact of anticholinergics on the aging brain: a review and practical application. *Aging health* 2008;4:311–20.
- 24 Charlson ME, Pompei P, Ales KL, et al. A new method of classifying prognostic comorbidity in longitudinal studies: development and validation. *J Chronic Dis* 1987;40:373–83.
- 25 Rockwood K, Song X, MacKnight C, et al. A global clinical measure of fitness and frailty in elderly people. *CMAJ* 2005;173:489–95.
- 26 England NHS. National cost collection for the NHS, 2019. Available: <https://www.england.nhs.uk/costing-in-the-nhs/national-cost-collection/>
- 27 Care Quality Commission. *National summary of the outpatients department 2011 survey*. Care Quality Commission, 2022. <https://www.cqc.org.uk/publications/surveys/outpatient-survey-2011>
- 28 de Lacy J. *The potential economic impact of virtual outpatient appointments in the West Midlands: a scoping study*. NHS, 2018.
- 29 British Medical Association, Employers NHS. *A guide to consultant job planning*. BMA, 2011.
- 30 Madelaire C, Gustafsson F, Kristensen SL, et al. Burden and Causes of Hospital Admissions in Heart Failure During the Last Year of Life. *JACC Heart Fail* 2019;7:561–70.
- 31 O'Connor CM, Whellan DJ, Fiuzat M, et al. Cardiovascular Outcomes With Minute Ventilation-Targeted Adaptive Servo-Ventilation Therapy in Heart Failure: The CAT-HF Trial. *J Am Coll Cardiol* 2017;69:1577–87.
- 32 Lewis GD, Malhotra R, Hernandez AF, et al. Effect of oral iron repletion on exercise capacity in patients with heart failure with reduced ejection fraction and iron deficiency: the IRONOUT HF randomized clinical trial. *JAMA* 2017;317:1958–66.
- 33 Turagam MK, Garg J, Whang W, et al. Catheter ablation of atrial fibrillation in patients with heart failure: a meta-analysis of randomized controlled trials. *Ann Intern Med* 2019;170:41–50.
- 34 Sundström J, Bruze G, Ottosson J, et al. Weight loss and heart failure: a nationwide study of gastric bypass surgery versus intensive lifestyle treatment. *Circulation* 2017;135:1577–85.
- 35 Anker SD, Butler J, Filippatos G, et al. Empagliflozin in heart failure with a preserved ejection fraction. *N Engl J Med* 2021;385:1451–61.
- 36 Sankaranarayanan R, Douglas H, Wong C. Cardio-nephrology MDT meetings play an important role in the management of cardiorenal syndrome. *Br J Cardiol* 2020;27:80–82.
- 37 González-Juanatey JR, Alegría Ezquerro E, Bertoméu Martínez V, et al. [Heart failure in outpatients: comorbidities and management by different specialists. The EPISERVE Study]. *Rev Esp Cardiol* 2008;61:611–9.
- 38 Charais C, Bowers M, Do OO, et al. Implementation of a disease management program in adult patients with heart failure. *Prof Case Manag* 2020;25:312–23.
- 39 Morton G, Masters J, Cowburn PJ. Multidisciplinary team approach to heart failure management. *Heart* 2018;104:1376–82.
- 40 Jaarsma T, van der Wal MHL, Lesman-Leegte I, et al. Effect of moderate or intensive disease management program on outcome in patients with heart failure: coordinating study evaluating outcomes of advising and counseling in heart failure (coach). *Arch Intern Med* 2008;168:316–24.
- 41 Salmon T, Essa H, Tajik B, et al. The impact of frailty and comorbidities on heart failure outcomes. *Card Fail Rev* 2022;8:e07.
- 42 Sankaranarayanan R, Hartshorne-Evans N, Redmond-Lyon S, et al. The impact of COVID-19 on the management of heart failure: a United Kingdom patient questionnaire study. *ESC Heart Fail* 2021;8:1324–32.

- 1 **Supplementary data: Analysis of Hospitalisations pre and post multispecialty MDT**
- 2 **based on ejection fraction**

Outcomes	Total Cohort (n=334)	HFrEF/HFmrEF (n=184)	HFpEF (n=150)	p (HFrEF vs. HFpEF)
All-cause hospitalisations (Pre-Multispecialty MDT meeting)	371	172/184 pre 0.93±0.4	199/150 pre 1.3±0.5	<0.001
All cause hospitalisations (post Multispecialty MDT meeting)	205 (Pre-MDT vs.post-MDT p<0.001)	38% reduction (106/172) (Pre-MDT vs.post MDT p<0.001)	99/199 (50% reduction) (Pre MDT vs. post MDT p<0.001)	0.11

3

4

