

Darwell, John ORCID: <https://orcid.org/0000-0002-8746-5315> (2015) The dark river: Kearsley - Clifton. The dark river, 2 . Café Royal Books, Southport, UK.

Downloaded from: <http://insight.cumbria.ac.uk/id/eprint/2832/>

*Usage of any items from the University of Cumbria's institutional repository 'Insight' must conform to the following fair usage guidelines.*

Any item and its associated metadata held in the University of Cumbria's institutional repository Insight (unless stated otherwise on the metadata record) may be copied, displayed or performed, and stored in line with the JISC fair dealing guidelines (available [here](#)) for educational and not-for-profit activities

**provided that**

- the authors, title and full bibliographic details of the item are cited clearly when any part of the work is referred to verbally or in the written form
  - a hyperlink/URL to the original Insight record of that item is included in any citations of the work
- the content is not changed in any way
- all files required for usage of the item are kept together with the main item file.

**You may not**

- sell any part of an item
- refer to any part of an item without citation
- amend any item or contextualise it in a way that will impugn the creator's reputation
- remove or alter the copyright statement on an item.

The full policy can be found [here](#).

Alternatively contact the University of Cumbria Repository Editor by emailing [insight@cumbria.ac.uk](mailto:insight@cumbria.ac.uk).

Café Royal Books  
caferoyalbooks.com  
Edited by Craig Atkinson  
Edition of 150

© 2015 John Darwell  
& Café Royal Books  
All rights reserved  
1015

# The Dark River

Kearsley – Clifton

**CRB**

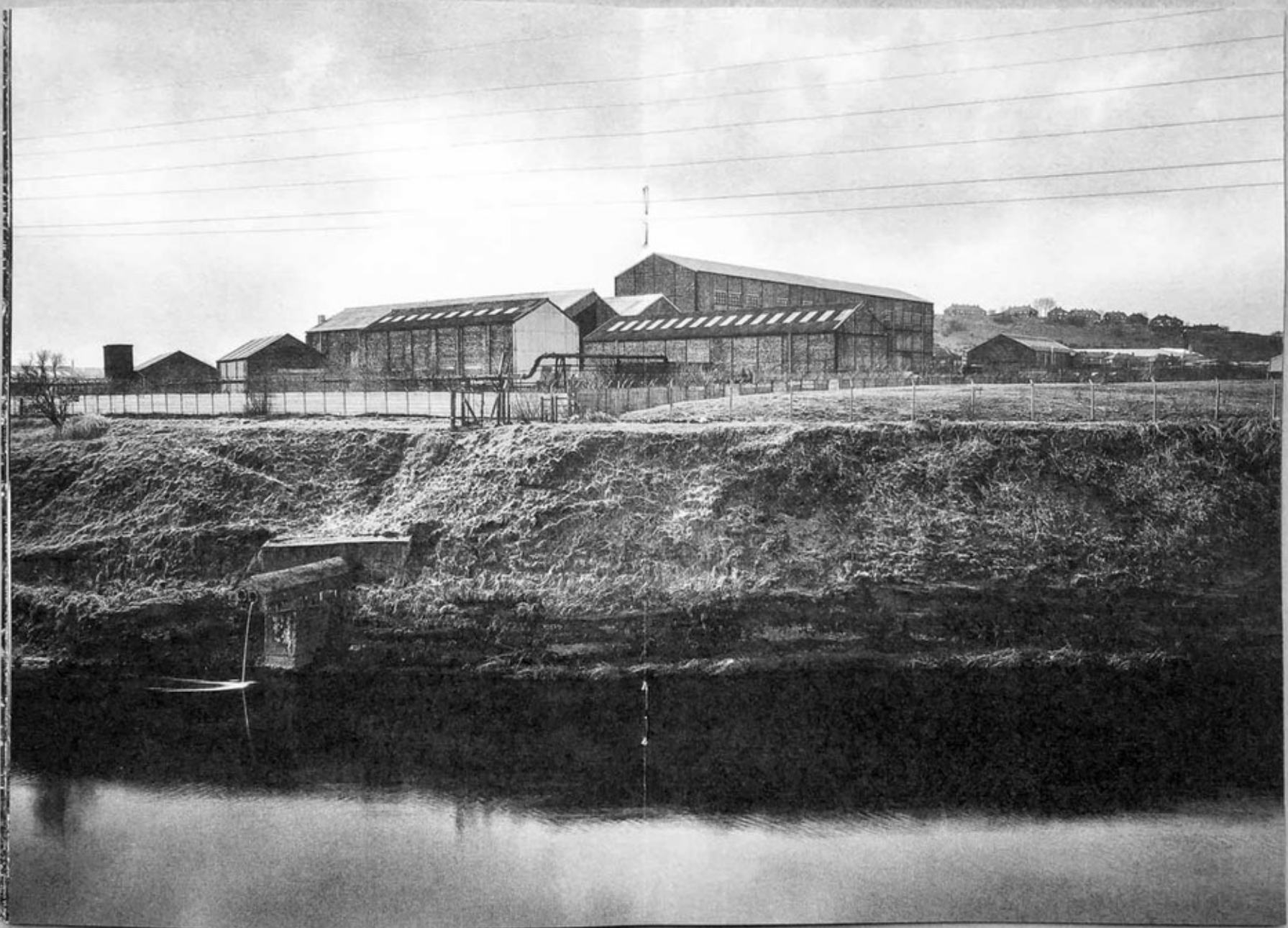
John Darwell







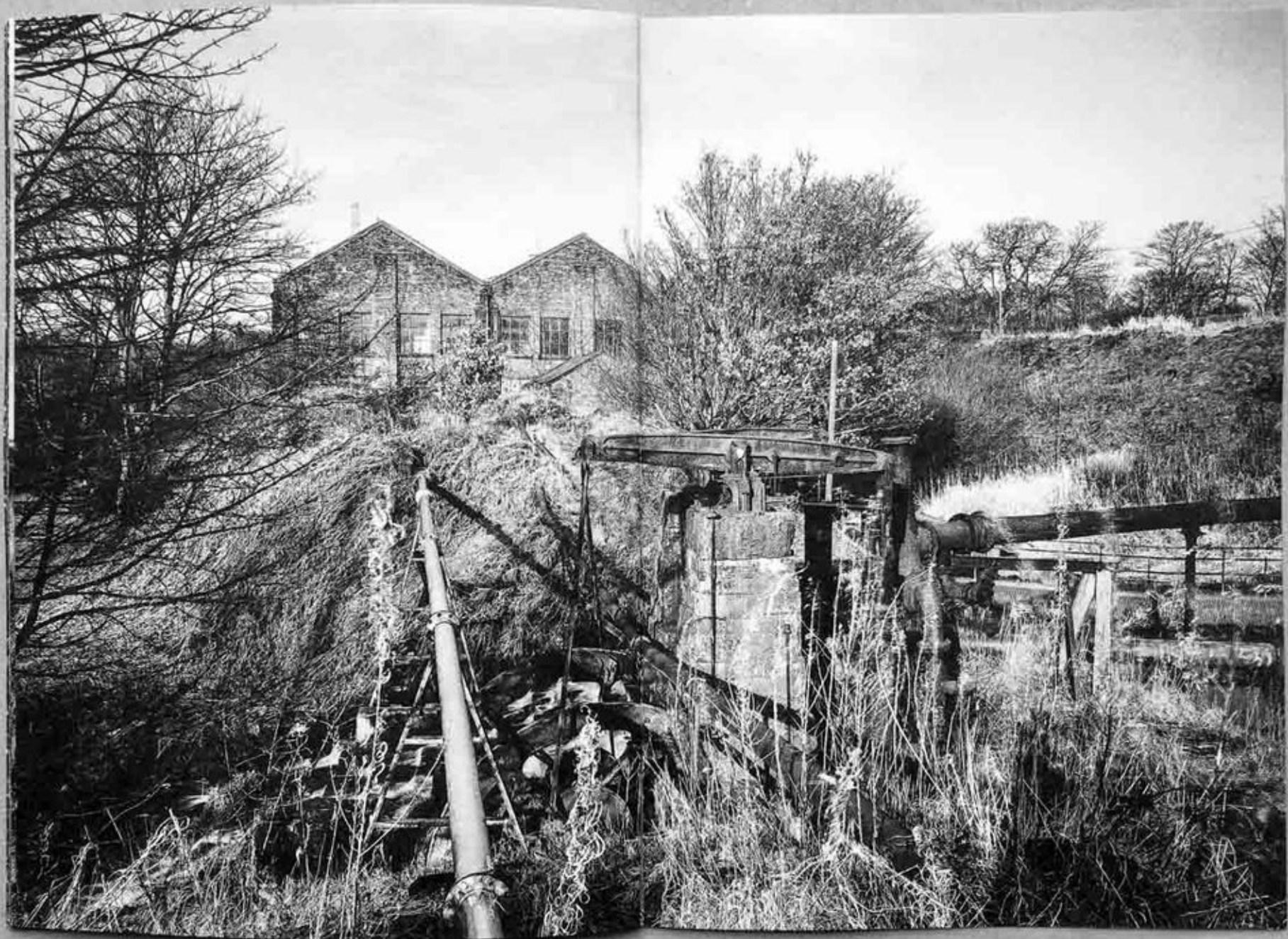














BOUNDARY  
STONE

PRESTWICH