

Watkins, Sarah J., Jonker, Leon and Arthur, Helen M. (2006) A direct interaction between TGF $\beta$  activated kinase 1 and the TGF $\beta$  type II receptor: implications for TGF $\beta$  signalling and cardiac hypertrophy. *Cardiovascular Research*, 69 (2). pp. 432-439.

Downloaded from: <http://insight.cumbria.ac.uk/id/eprint/6343/>

*Usage of any items from the University of Cumbria's institutional repository 'Insight' must conform to the following fair usage guidelines.*

Any item and its associated metadata held in the University of Cumbria's institutional repository Insight (unless stated otherwise on the metadata record) may be copied, displayed or performed, and stored in line with the JISC fair dealing guidelines (available [here](#)) for educational and not-for-profit activities

**provided that**

- the authors, title and full bibliographic details of the item are cited clearly when any part of the work is referred to verbally or in the written form
  - a hyperlink/URL to the original Insight record of that item is included in any citations of the work
- the content is not changed in any way
- all files required for usage of the item are kept together with the main item file.

**You may not**

- sell any part of an item
- refer to any part of an item without citation
- amend any item or contextualise it in a way that will impugn the creator's reputation
- remove or alter the copyright statement on an item.

The full policy can be found [here](#).

Alternatively contact the University of Cumbria Repository Editor by emailing [insight@cumbria.ac.uk](mailto:insight@cumbria.ac.uk).

# A direct interaction between TGF $\beta$ activated kinase 1 and the TGF $\beta$ type II receptor: Implications for TGF $\beta$ signalling and cardiac hypertrophy

Sarah J. Watkins<sup>1</sup>, Leon Jonker<sup>1</sup>, Helen M. Arthur<sup>\*</sup>

*The Institute of Human Genetics, University of Newcastle Upon Tyne, Central Parkway, Newcastle Upon Tyne, NE1 3BZ, United Kingdom*

Received 28 April 2005; received in revised form 4 November 2005; accepted 6 November 2005

Available online 19 December 2005

Time for primary review 26 days

## Abstract

**Objective:** Transforming growth factor beta (TGF $\beta$ )-activated kinase 1 (TAK1) is a MAP kinase kinase kinase involved in numerous signalling pathways and is strongly implicated in cardiac hypertrophy and heart failure. TGF $\beta$  is also associated with hypertension and heart disease, and evidence suggests that TGF $\beta$ 1 and TAK1 act together in a cardiac stress signalling pathway. Canonical TGF $\beta$  signalling is mediated through Smad transcription factors, but TGF $\beta$  can also rapidly activate TAK1. The activation of the Smad cascade is well characterised, but little is known about how TAK1 is activated in response to TGF $\beta$ , and no direct link between any MAPK kinase pathway and the TGF $\beta$  receptors has yet been established. Since TAK1 is activated by TGF $\beta$  within 1 min in cardiomyocytes, we hypothesised there might be a direct interaction between TAK1 and one of the TGF $\beta$  receptors.

**Methods:** We used a combination of in vitro binding assays and co-immunoprecipitation (IP) experiments to investigate whether TAK1 interacted with the type I (ALK1 or ALK5) or type II (TBR2) TGF $\beta$  receptors. Interactions between endogenous proteins were tested using mouse myoblast and rat cardiomyocyte cells.

**Results:** Immunoprecipitation and in vitro binding assays show that TAK1 binds directly to TBR2. Precipitation of endogenous TAK1 protein in rat cardiomyocytes shows that, in addition to a direct association with TBR2, it also interacts indirectly with ALK5.

**Conclusions:** We describe a novel and specific interaction between TAK1 and TBR2 which, for the first time, directly links TAK1 to the TGF $\beta$  signalling cascade and potentially explains how TGF $\beta$  signalling in cardiomyocytes mediates a hypertrophic response.

© 2005 European Society of Cardiology. Published by Elsevier B.V. All rights reserved.

**Keywords:** Angiotensin; Growth factors; Heart failure; Hypertrophy; MAP kinase

## 1. Introduction

The molecular pathways that couple increased haemodynamic load to myocardial hypertrophy, cardiomyocyte apoptosis and subsequent heart failure are complex and represent an important challenge in current cardiovascular medicine [1–4]. Recently, an important cytokine, transforming growth factor  $\beta$ 1 (TGF $\beta$ 1), has been shown to be pivotal in mediating the cardiac hypertrophic response induced by angiotensin II [5–8]. TGF $\beta$ 1 expression is

stimulated by Angiotensin II and it becomes highly expressed in hypertrophic myocardium, where it regulates a wide range of cellular functions including proliferation, differentiation, apoptosis and fibrosis [9,10].

To promote signalling, TGF $\beta$  first binds to the TGF $\beta$  type II receptor (TBR2) at the cell surface stimulating it to activate the TGF $\beta$  type I receptor (TBR1), which in turn phosphorylates downstream Smad proteins. These activated Smad complexes translocate to the nucleus where they regulate the transcription of TGF $\beta$  target genes [11,12]. In addition to the canonical TGF $\beta$  signalling pathway, TGF $\beta$  has been shown to rapidly activate TGF $\beta$  activated kinase 1 (TAK1), a MAP kinase kinase kinase [13]. In cardiomyocytes, TAK1 is activated within a minute of exposure

\* Corresponding author. Tel.: +44 191 241 8648; fax: +44 191 241 8666.

E-mail address: Helen.Arthur@ncl.ac.uk (H.M. Arthur).

<sup>1</sup> Authors contributed equally to this work.

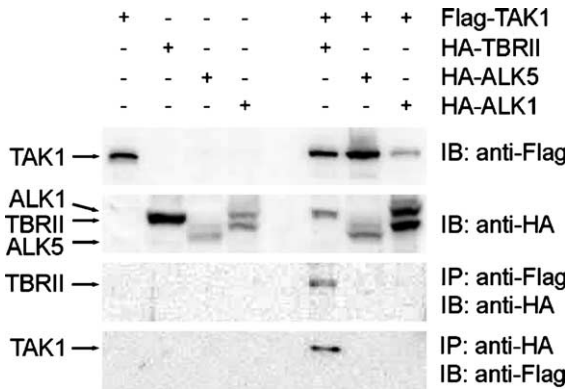


Fig. 1. TAK1 immunoprecipitates with the Type II TGFβ receptor. The two upper panels show immunoblot (IB) analysis of 293T cell lysates expressing Flag-TAK1 and HA-ALK1, HA-ALK5 (type I TGFβ receptors) or HA-TBR2II (Type II TGFβ receptor), as indicated. Immunoprecipitation (IP) of TAK1 with anti-Flag antibody followed by immunoblot analysis with anti-HA antibody (3rd panel) detects TBR2II but not ALK1 or ALK5. Reciprocal immunoprecipitation of the TGFβ receptors using anti-HA antibody, followed by immunoblot analysis with anti-Flag (bottom panel), detects TAK1 protein only in the TBR2II precipitate.

to TGFβ1 [13,14] and there is clear evidence that TAK1 is also an important regulator of the hypertrophic response. Firstly, TAK1 is activated in cardiomyocytes following pressure overload generated by aortic constriction; secondly, cardiac specific over-expression of activated TAK1 in a transgenic mouse leads to cardiac hypertrophy and heart failure; and thirdly, dominant negative TAK1 protein can inhibit TGFβ-induced hypertrophic events in mouse cardiomyocytes and fibroblasts [14,15]. This particularly illustrates the importance of TAK1 as a mediator of cardiac TGFβ signalling, although TAK1 also interacts with the BMP and IL-1 signalling pathways and is arguably a central protein in the cellular signalling network [16–18]. Active TAK1 phosphorylates MKK3 and/or MKK6, which in turn phosphorylate p38. Increased p38 activity is strongly associated with typical hypertrophic responses including inflammation, fibroblast proliferation, hypertrophy and apoptosis [19–22].

The mechanism of intracellular TAK1 activation by extracellular TGFβ stimulation is not well understood.

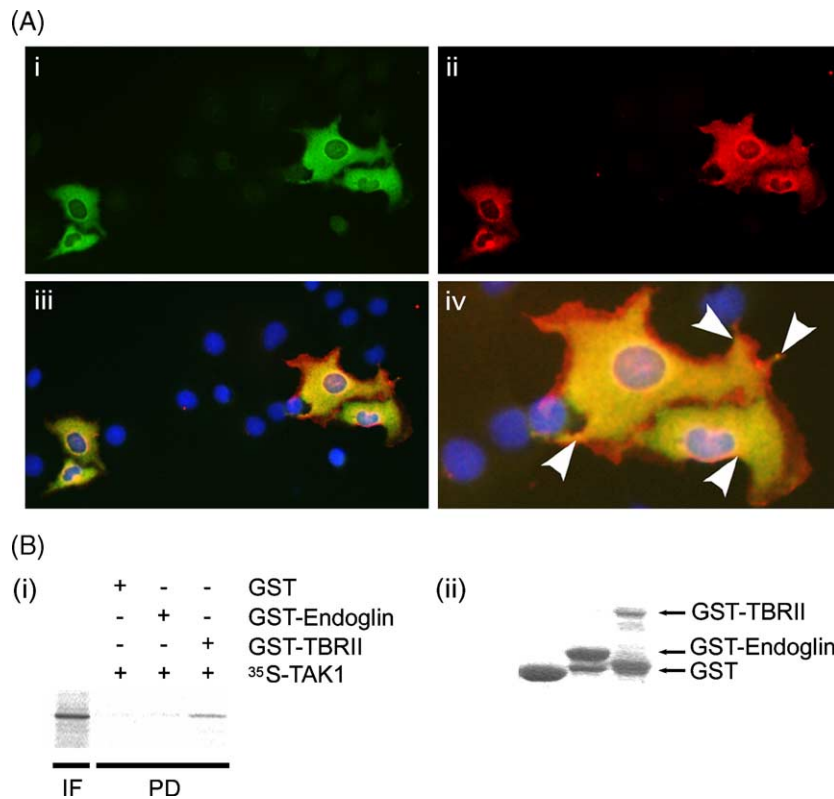


Fig. 2. (A) Cellular co-localisation of TAK1 and TBR2II in Cos7 cells. Immunofluorescence microscopy of Cos7 cells co-expressing recombinant TAK1 and TBR2II proteins. Cells were immunostained with (i) anti-TAK1 antibody and (ii) anti-TBR2II antibody. The merged images (iii and iv) show areas of co-localisation in yellow (nuclei were detected with DAPI staining). Arrows indicate areas of co-localisation at the cell membrane. (B) In vitro binding assay with TAK1 and the cytoplasmic domain of TGFβ receptor proteins, TBR2II and endoglin (a Type III TGFβ receptor). <sup>35</sup>S-labelled TAK1 protein was generated by in vitro transcription and translation and mixed with either glutathione S-transferase (GST) alone, GST–Endoglin fusion protein or GST–TBR2II in an in vitro binding assay. (i) Autoradiograph shows that <sup>35</sup>S-TAK1 in the binding assay input fraction (IF) is seen after pull down (PD) of GST–TBR2II, but not GST–Endoglin. (ii) Coomassie staining of GST, GST–Endoglin fusion protein and GST–TBR2II fusion protein after SDS-PAGE, confirmed that GST and GST fusion proteins were present in the binding assays.

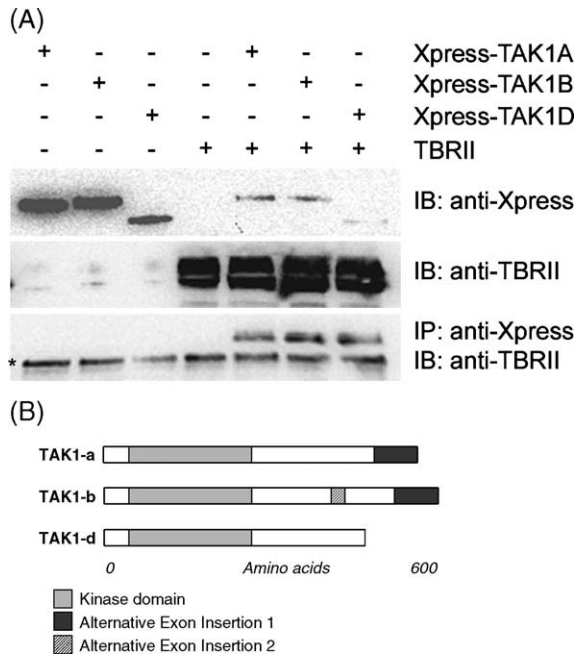


Fig. 3. Immunoprecipitation of TBR11 with three different isoforms of TAK1. (A) Immunoblot analysis of Cos7 cell lysates expressing three TAK1 isoforms (A, B and D) and TBR11. TBR11 is detected by immunoblotting after immunoprecipitation of all three TAK1 isoforms. (\*)=Non-specific IgG band. (B) Diagrammatic representation of the three TAK1 isoforms used.

Early work showed that TAK1 is activated by TAK1-binding protein (TAB1), which is required for normal cardiac development [23,24], but this does not explain the rapid activation response to extracellular TGF $\beta$ . Here we describe a specific interaction between TAK1 and the type II TGF $\beta$  receptor (TBR11), which directly links TAK1 to the primary step of the TGF $\beta$  signalling cascade. This work is important not only as the first demonstration of a direct connection between a TGF $\beta$  receptor and TAK1 but also because of its potential importance in the early signalling events leading to cardiac hypertrophy and heart failure.

## 2. Methods

### 2.1. Plasmids and antibodies

HA-TAK1 and FLAG-TAK1 were cloned into pcDNA3.1<sup>+</sup> (Invitrogen). The following plasmids were kind gifts: pCMV.HA-ALK1, pCMV.HA-ALK5, and pcDNA.HA-TBR11 (P. ten Dijke), pCMV.myc-TAB1 (T. Ishitani), pGEX4T.mTBR11 (P. Eyers), pXpressTAK1A, pXpressTAK1B and pXpressTAK1D (F. Guesdon), pcDL.HA-MLTK $\beta$  (E. Nishida). TAK1 was cloned into vector pFTX9 [25] to generate pFTX9.mTAK1 for in vitro transcription/translation. pGEX2T.mEndoglin GST-fusion plasmid was generated by PCR cloning of Endoglin cytoplasmic region cDNA into pGEX2T (Pharmacia). Primary antibodies were

anti-TAK1 (sc-7967), anti-TBR11 (sc-220) and anti-ALK5 (sc-398) antibodies (Santa Cruz), anti-Myc antibody (Oncogene Research Products), 3F10 anti-HA antibody (Roche), M2 anti-Flag antibody (Sigma) and anti-Xpress antibody (Invitrogen). Secondary antibodies were conjugated to HRP (DAKO) or FITC/Texas Red (Vector Laboratories).

### 2.2. Cell culture and transient transfections

Cos7 (African green monkey kidney) and 293T (Human embryonal kidney) cells were used for transfection studies and were cultured in Dulbecco's Modified Eagles Medium (DMEM) supplemented with 10% Foetal Calf Serum (FCS) and 4 mM glutamine. Cells were transfected with 1  $\mu$ g of plasmid using FuGene6 (Roche) and incubated for 24 to 48 h before appropriate treatment.

To examine endogenous protein interactions, C2C12 (mouse muscle myoblast) cells were cultured in DMEM supplemented with 15% FCS and 4 mM glutamine, whilst H9C2 (rat cardiomyocyte) cells were cultured in high glucose (4500 mg/ml) DMEM supplemented with 10% FCS and 4 mM glutamine.

### 2.3. Immunofluorescence microscopy

Cos7 cells were co-transfected with pcDNA3.1+FLAG-TAK1 and pcDNA.HA-TBR11 plasmids and fixed in 100% methanol after 24 h. Cells were permeabilised in PBS/0.5% Triton X-100 for 30 min at 4  $^{\circ}$ C, blocked in PBS/0.1% Tween-20/10% FCS for 30 min at 37  $^{\circ}$ C and treated with anti-TAK1 antibody for 1 h at 37  $^{\circ}$ C before washing in PBS/0.1% Tween-20 and incubation with FITC-conjugated secondary antibody for 1 h (37  $^{\circ}$ C). For double staining, cells were washed thoroughly again and incubated with goat polyclonal anti-TBR11 primary antibody, followed by Texas

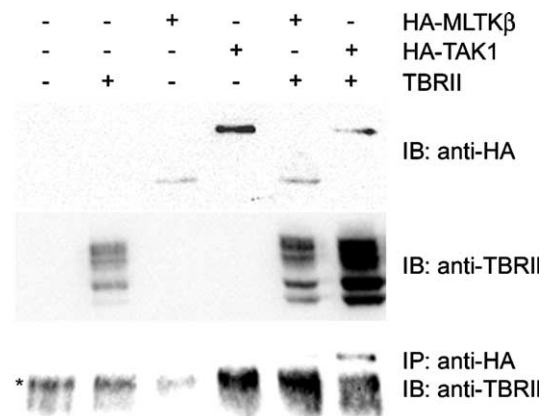


Fig. 4. TBR11 and TAK1 interact specifically. Immunoblot analysis of Cos7 cell lysates co-expressing TBR11 with either HA-MLTK $\beta$  or HA-TAK1 shows that TBR11 is not detectable after immunoprecipitation of MLTK $\beta$ , but is detectable after immunoprecipitation of TAK1. (\*)=Non-specific IgG band.

Red-conjugated secondary antibody, as before. Slides were mounted in Vectashield with DAPI (Vector laboratories). Images were acquired using a Zeiss Axioplan II microscope and Axiovision software.

#### 2.4. Preparation of cell extracts and GST fusion proteins

To prepare protein extracts for immunoprecipitation, cells were harvested in ice-cold NTT lysis buffer (100 mM NaCl, 50 mM Tris-HCl pH 8, 1% Triton X-100, 10 mM NaF, +protease inhibitor cocktail [bestatin, leupeptin, pepstatin A, aprotinin, E64; Sigma]) and homogenized through a 25 Gauge syringe needle. Cell debris was removed by microcentrifugation and supernatant was used for immunoprecipitation experiments. GST, GST-Endoglin and GST-TBR II fusion proteins were purified from BL21 *Escherichia coli* extracts using Glutathione Sepharose 4B resin followed by elution with 10 mM reduced glutathione, 50 mM Tris pH 8.

#### 2.5. Immunoblotting and immunoprecipitation

For immunoblot analysis, protein was transferred to nitrocellulose membrane, blocked with PBS/0.3% Tween-20/3% skimmed milk before incubation with primary antibody. Washed membranes were incubated with HRP-conjugated secondary antibody and proteins visualised using ECL. For immunoprecipitation, cell lysates were incubated for 2 to 12 h at 4 °C with the indicated antibody. IgG was precipitated by incubation with sepharose-conjugated protein A (Sigma) for 1 to 2 h at 4 °C followed by microcentrifugation. The immunoprecipitate was washed in high salt NTT buffer (400 mM NaCl, 50 mM Tris-HCl pH 8.0, 1% Triton X-100, 10 mM NaF, +protease inhibitor

cocktail) and analyzed by SDS polyacrylamide gel electrophoresis (PAGE) and immunoblotting.

#### 2.6. In vitro binding assay

[<sup>35</sup>S]-methionine labelled TAK1 protein was prepared using a TnT T7 Quick coupled transcription/translation system (Promega) mixed with purified GST and GST fusion proteins, and then precipitated with Glutathione Sepharose 4B resin. GST pull down proteins were washed three times in NTT buffer, separated by SDS-PAGE and radioactivity was detected with a BAS 2000 image analyzer (Fuji).

### 3. Results

#### 3.1. TAK1 protein interacts specifically with the type II TGFβ receptor (TBR II)

The role of TAK1 in cardiac hypertrophy and its extremely rapid activation by TGFβ1 [14] led us to hypothesise that there may be a direct interaction between TAK1 and a ligand-binding TGFβ receptor. In order to test this hypothesis we performed immunoprecipitation (IP) experiments on 293T cells that co-expressed TAK1 with one of the type I TGFβ receptors (ALK5 or ALK1) or the type II TGFβ receptor (TBR II). Ectopically expressed FLAG-tagged TAK1 protein was immunoprecipitated using monoclonal anti-FLAG antibody. The type I receptors (ALK5 and ALK1) and type II receptor (TBR II) all carried Haemagglutinin (HA) epitope tags at their N-terminus and were all detected in the cell lysates (Fig. 1, 2nd panel). However, immunoblot analysis of the TAK1 immunoprecipitate detected only the TBR II protein and not the ALK5

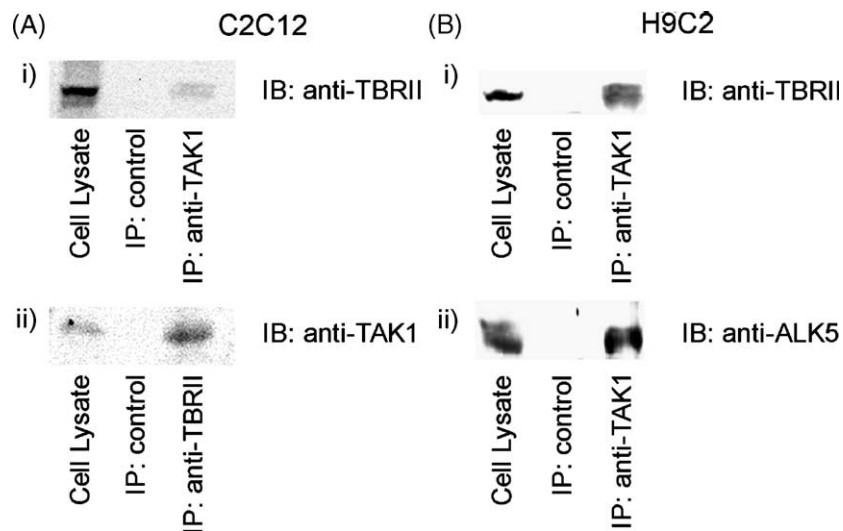


Fig. 5. Endogenous TBR II and TAK1 co-immunoprecipitate. (A) Immunoblot analysis of C2C12 cell lysates detects (i) endogenous TBR II after immunoprecipitation of endogenous TAK1 and (ii) endogenous TAK1 after immunoprecipitation of endogenous TBR II. (B) (i) Immunoblot analysis of H9C2 cardiomyocyte cell lysates with anti-TBR II antibody detects endogenous TBR II after immunoprecipitation of endogenous TAK1. (ii) Further immunoblot analysis of TAK1 precipitates from H9C2 cells with anti-ALK5 antibody also detects endogenous ALK5.

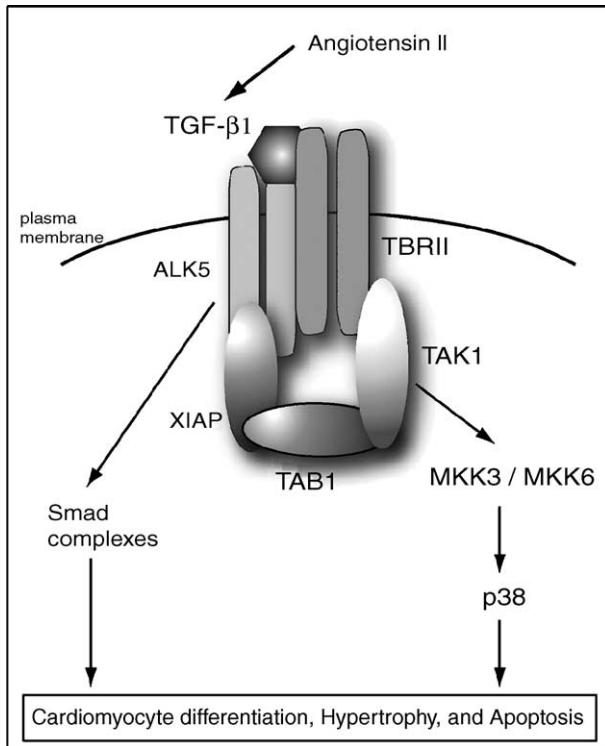


Fig. 6. Model of integrated Smad-dependent and TAK1-dependent TGF $\beta$  signalling. TGF $\beta$ 1 is induced by angiotensin II and binds to the type II TGF $\beta$  receptor (TBR II) on the cell membrane. TBR II phosphorylates and activates ALK5 (the type I receptor), which can then propagate the signal via Smad proteins to the nucleus where Smad-dependent TGF $\beta$  responsive genes are regulated. ALK5 also binds to the X-linked inhibitor of apoptosis (XIAP), which associates with TAB1 the major binding partner for TAK1 [32] and therefore indirectly links TAK1 to the type I receptor. TAK1 also associates directly with the cytoplasmic domain of TBR II forming a TGF $\beta$ -receptor protein complex at the cell membrane. Upon exposure to TGF $\beta$ , the TBR II/TAK1 interaction would allow rapid activation of TAK1 via the TGF $\beta$  receptor complex. Active TAK1 phosphorylates MKK3/6, which in turn activates p38 [20]. Smad-dependent and TAK-dependent signals may act separately or in conjunction to affect a variety of cell functions. TAK1 signalling appears to be particularly important in regulating cardiomyocyte hypertrophy.

or ALK1 type I receptor proteins (Fig. 1, 3rd panel). Conversely, when all three TGF $\beta$  receptors were immunoprecipitated with anti-HA antibody, TAK1 protein could only be detected in the TBR II immunoprecipitate and not in the ALK5 or ALK1 immunoprecipitate (Fig. 1, bottom panel). These results demonstrate that TAK1 interacts with TBR II but not with type I TGF $\beta$  receptors. Immunofluorescence microscopy of Cos7 cells co-transfected with both TAK1 and TBR II plasmids showed that cells clearly expressed both TAK1 and TBR II proteins and that there was a significant amount of co-localisation both in the cytoplasm and at areas of the cell membrane (Fig. 2A).

### 3.2. TAK1 protein can interact directly with TBR II

In order to determine that the TAK1 interaction with TBR II was not due to the presence of any specific inter-

mediate binding proteins, an in vitro binding assay was performed.  $^{35}$ S-labelled TAK1 protein was generated by in vitro transcription and translation and then mixed directly with GST fusion proteins of the cytoplasmic domains of TBR II and the type III TGF $\beta$  receptor, Endoglin. GST fusion proteins were precipitated with Glutathione Sepharose resin and precipitates were analyzed for the presence of  $^{35}$ S-TAK1. Radiolabelled TAK1 protein was clearly detectable after precipitation of GST–TBR II protein but not in precipitates of GST–Endoglin or GST alone (Fig. 2B). The in vitro binding assay strongly suggests that TAK1 is capable of directly interacting with the cytoplasmic domain of TBR II and that the co-immunoprecipitation results were not due to the action of an intermediary binding or scaffold protein.

### 3.3. Three isoforms of TAK1 can interact with TBR II

There are four isoforms of human TAK1 (TAK1A, B, C and D) and all are very similar to each other but vary significantly at their C-Terminal ends [26]. TAK1A is the most abundant across all tissue types and the one we have used in all other experiments. TAK1A, B and C are ubiquitously expressed whereas TAK1D has a more restricted pattern of expression. All four isoforms are expressed in cardiac tissue with TAK1A and B expressed at the highest levels [26]. In order to further characterise the TAK1/TBR II interaction we selected three TAK1 isoforms—A and B (due to their abundance in heart) and D (which differed most at the C terminus—Fig. 3B) and co-expressed them with TBR II in Cos7 cells. All three isoforms carried N-terminal Xpress epitope tags (Promega) and were immunoprecipitated from whole cell extracts with an anti-Xpress antibody (Fig. 3A). Immunoblot analysis with anti-TBR II antibody detected TBR II protein equally in all three immunoprecipitates (Fig. 3A—bottom panel). TBR II therefore interacted with all three TAK1 isoforms tested.

### 3.4. TBR II interacts specifically with TAK1

To confirm that the TAK1/TBR II interaction is specific to TAK1, TBR II protein was co-expressed in Cos7 cells with either TAK1 or MLK-like triple kinase  $\beta$  (MLTK $\beta$ —[27]), a closely related MAPKKK with 45% homology to TAK1. Both TAK1 and MLTK $\beta$  proteins were immunoprecipitated from whole cell lysates. Immunoblot analysis with anti-TBR II antibody detected TBR II protein in the TAK1 precipitate but not in the MLTK $\beta$  precipitate (Fig. 4). The results confirm that TBR II specifically interacts with TAK1 and not with a related kinase.

### 3.5. TAK1 and TBR II proteins interact endogenously

Endogenous interactions between TAK1 and TBR II were investigated in both mouse myoblast (C2C12) and rat

cardiomyocyte (H9C2) cell lines. C2C12 cell lysates were immunoprecipitated with anti-TAK1 monoclonal antibody in order to pull down endogenous TAK1 protein. Immunoblot analysis with anti-TBR2 antibody clearly detected endogenous TBR2 protein in the TAK1 precipitate (Fig. 5A, i). A reciprocal immunoprecipitation with anti-TBR2 antibody on C2C12 cell lysate also precipitated endogenous TAK1 protein as detected by immunoblot analysis (Fig. 5A, ii). These experiments confirmed an interaction between TAK1 and TBR2 proteins at endogenous levels. Similar experiments were also performed on H9C2 cardiomyocyte cells. Immunoblot analysis with anti-TBR2 antibody again clearly detected endogenous TBR2 protein in the TAK1 precipitate (Fig. 5B, i). The results confirmed that TAK1 and TBR2 proteins interact at endogenous protein levels in cardiomyocyte cells. We also tested whether endogenous TAK1 protein interacted with ALK5 indirectly, perhaps through the known association of ALK5 with TBR2. This was tested in the cardiomyocyte cells by immunoblot analysis of the endogenous TAK1 precipitate with anti-ALK5 antibody and clearly shows that endogenous ALK5 is indeed present in association with TAK1 (Fig. 5B, ii). As TAK1 did not interact directly with ALK5 when both were over-expressed (Fig. 1) it is likely to be an indirect interaction, as indicated in Fig. 6.

#### 4. Discussion

Angiotensin II has been well characterised as a promoter of cardiac hypertrophy [28–30] and more recently it has been shown to trigger the hypertrophic response through TGF $\beta$ 1 signalling [5,6]. Of the downstream proteins known to be activated by TGF $\beta$  signalling, *in vivo* data suggests that TAK1 is critically important in the cardiac hypertrophic response [14] and TAK1 inhibitors can reduce fibrosis and inflammation [15,16]. However, the mechanism by which (intracellular) TAK1 is rapidly activated in cardiomyocytes by (extracellular) TGF $\beta$  ligand remains unresolved. Here we report an important step forward, as we have discovered a novel interaction between TAK1 and the cytoplasmic domain of TBR2 that potentially explains the swift response of TAK1 to TGF $\beta$ . We used reciprocal co-immunoprecipitations (co-IPs) and *in vitro* GST pull down assays to show that TBR2 binds to TAK1. Consistent with this interaction, immunofluorescence microscopy showed that transiently over-expressed TAK1 and TBR2 proteins co-localise in transfected cells. Unfortunately, the detection limits of fluorescent immunocytochemistry in our hands meant that we were unable to ascertain co-localisation of endogenous proteins. The specificity of the interaction was confirmed in that there was no detectable interaction between TBR2 and MLTK $\beta$ , a kinase closely related to TAK1. Importantly, the interaction was also observed between endogenous TAK1

and TBR2 proteins in both mouse muscle myoblast and rat cardiomyocyte cell types. Further detailed characterisation of the interacting sites are currently in progress, but the fact that three TAK1 isoforms (TAK1A, B and D) all interact with TBR2 despite significant variation at the C-terminus suggests that this interaction is not mediated at the C-terminal region of the TAK1 protein.

An indirect association between TAK1 and the TGF $\beta$  receptors has previously been proposed as the X-linked inhibitor of apoptosis (XIAP) has been reported to interact with TAB1 [31] and to promote association of TAB1 to the type I receptor, ALK5 [32]. The work described here also indicates that TAK1 protein associates indirectly with ALK5, but that this may occur through direct association with TBR2. Taken together, this evidence suggests that a molecular complex is formed at the cell membrane composed of the TGF $\beta$  receptors and associated proteins including Smads, XIAP and TAK1 (as described in Fig. 6). We hypothesise that when the complex is exposed to TGF $\beta$ , TAK1 becomes activated through its association with the TGF $\beta$  receptor complex and phosphorylates downstream MAPKKs. As described above, there is a wealth of evidence pointing to the importance of TGF $\beta$  and TAK1 in cardiac hypertrophy so it is likely that these signalling events directly contribute to the hypertrophic response. Furthermore, the direct interaction of TAK1 with TBR2 potentially explains the rapid activation of TAK1 (within 1 min) when extracellular TGF $\beta$  binds TBR2 at the cardiomyocyte cell surface [14]. However, further work is required to determine whether this occurs via phosphorylation of TAK1 by the TGF $\beta$  receptor complex. There is considerable evidence for synergy between the TAK-dependent and Smad-dependent TGF $\beta$  signalling pathways [32–35]. TAK1 has been reported to interact with Smad 7 to inhibit TGF $\beta$  signalling by a negative feedback mechanism [36,37]. More recently, TAK1 has been shown to interact with Smads 1, 2, 3, 4, 5 and 6 [38] and to inhibit BMP signalling. These studies illustrate the close integration of the Smad-dependent and TAK-dependent TGF $\beta$  signalling pathways but the relative contributions of TAK-dependent and Smad-dependent pathways to cardiac hypertrophy are still to be determined [39]. Nonetheless, the TAK1/TBR2 interaction described here potentially explains how two divergent, but linked, TGF $\beta$  responsive pathways can respond to the same extracellular TGF $\beta$  signal (Fig. 6).

Our results show a specific interaction between the TGF $\beta$  receptor II and TAK1, which is likely to play an important role in regulating TAK1 activity in cardiomyocytes. Further work is in progress to characterise this interaction and investigate the molecular nature of the regulation of TAK1 activity by TGF $\beta$ 1 in cardiomyocytes. However, even at this early stage, this interaction suggests how TAK1 can be rapidly activated by TGF $\beta$ 1 and may be a critical molecular mechanism in the initiation of cardiac hypertrophy.

## Acknowledgements

This research was supported by the British Heart Foundation PG/05/056, the Cookson Trust and the Newcastle NHS hospitals trust. We also thank Dr. Caroline Hill for helpful advice.

## References

- [1] MacLellan WR, Schneider MD. Death by design. Programmed cell death in cardiovascular biology and disease. *Circ Res* 1997;81:137–44.
- [2] Hunter JJ, Chien KR. Signaling pathways for cardiac hypertrophy and failure. *N Engl J Med* 1999;341:1276–83.
- [3] Sadoshima J, Izumo S. The cellular and molecular response of cardiac myocytes to mechanical stress. *Annu Rev Physiol* 1997;59:551–71.
- [4] MacLellan WR, Schneider MD. Genetic dissection of cardiac growth control pathways. *Annu Rev Physiol* 2000;62:289–319.
- [5] Schultz Jel J, Witt SA, Glascock BJ, Nieman ML, Reiser PJ, Nix SL, et al. TGF-beta1 mediates the hypertrophic cardiomyocyte growth induced by angiotensin II. *J Clin Invest* 2002;109:787–96.
- [6] Schneider MD. Serial killer: angiotensin drives cardiac hypertrophy via TGF-beta1. *J Clin Invest* 2002;109:715–6.
- [7] Rosenkranz S. TGF-beta1 and angiotensin networking in cardiac remodeling. *Cardiovasc Res* 2004;63:423–32.
- [8] Ikeuchi M, Tsutsui H, Shiomi T, Matsusaka H, Matsushima S, Wen J, et al. Inhibition of TGF-beta signaling exacerbates early cardiac dysfunction but prevents late remodeling after infarction. *Cardiovasc Res* 2004;64:526–35.
- [9] Tomita H, Egashira K, Ohara Y, Takemoto M, Koyanagi M, Katoh M, et al. Early induction of transforming growth factor-beta via angiotensin II type 1 receptors contributes to cardiac fibrosis induced by long-term blockade of nitric oxide synthesis in rats. *Hypertension* 1998;32:273–9.
- [10] Senbonmatsu T, Ichihara S, Price Jr E, Gaffney FA, Inagami T. Evidence for angiotensin II type 2 receptor-mediated cardiac myocyte enlargement during in vivo pressure overload. *J Clin Invest* 2000;106:R25–9.
- [11] Shi Y, Massague J. Mechanisms of TGF-beta signaling from cell membrane to the nucleus. *Cell* 2003;113:685–700.
- [12] ten Dijke P, Hill CS. New insights into TGF-beta-Smad signalling. *Trends Biochem Sci* 2004;29:265–73.
- [13] Yu L, Hebert MC, Zhang YE. TGF-beta receptor-activated p38 MAP kinase mediates Smad-independent TGF-beta responses. *EMBO J* 2002;21:3749–59.
- [14] Zhang D, Gaussin V, Taffet GE, Belaguli NS, Yamada M, Schwartz RJ, et al. TAK1 is activated in the myocardium after pressure overload and is sufficient to provoke heart failure in transgenic mice. *Nat Med* 2000;6:556–63.
- [15] Ono K, Ohtomo T, Ninomiya-Tsuji J, Tsuchiya M. A dominant negative TAK1 inhibits cellular fibrotic responses induced by TGF-beta. *Biochem Biophys Res Commun* 2003;307:332–7.
- [16] Ninomiya-Tsuji J, Kajino T, Ono K, Ohtomo T, Matsumoto M, Shiina M, et al. A resorcylic acid lactone, 5Z-7-oxozeaenol, prevents inflammation by inhibiting the catalytic activity of TAK1 MAPK kinase. *J Biol Chem* 2003;278:18485–90.
- [17] Shibuya H, Iwata H, Masuyama N, Gotoh Y, Yamaguchi K, Irie K, et al. Role of TAK1 and TAB1 in BMP signaling in early *Xenopus* development. *EMBO J* 1998;17:1019–28.
- [18] Monzen K, Hiroi Y, Kudoh S, Akazawa H, Oka T, Takimoto E, et al. Smads, TAK1, and their common target ATF-2 play a critical role in cardiomyocyte differentiation. *J Cell Biol* 2001;153:687–98.
- [19] Nemoto S, Sheng Z, Lin A. Opposing effects of Jun kinase and p38 mitogen-activated protein kinases on cardiomyocyte hypertrophy. *Mol Cell Biol* 1998;18:3518–26.
- [20] Wang Y, Huang S, Sah VP, Ross Jr J, Brown JH, Han J, et al. Cardiac muscle cell hypertrophy and apoptosis induced by distinct members of the p38 mitogen-activated protein kinase family. *J Biol Chem* 1998;273:2161–8.
- [21] Liao P, Georgakopoulos D, Kovacs A, Zheng M, Lerner D, Pu H, et al. The in vivo role of p38 MAP kinases in cardiac remodeling and restrictive cardiomyopathy. *Proc Natl Acad Sci U S A* 2001;98:12283–8.
- [22] Clerk A, Michael A, Sugden PH. Stimulation of the p38 mitogen-activated protein kinase pathway in neonatal rat ventricular myocytes by the G protein-coupled receptor agonists, endothelin-1 and phenylephrine: a role in cardiac myocyte hypertrophy? *J Cell Biol* 1998;142:523–35.
- [23] Shibuya H, Yamaguchi K, Shirakabe K, Tonegawa A, Gotoh Y, Ueno N, et al. TAB1: an activator of the TAK1 MAPKKK in TGF-beta signal transduction. *Science* 1996;272:1179–82.
- [24] Komatsu Y, Shibuya H, Takeda N, Ninomiya-Tsuji J, Yasui T, Miyado K, et al. Targeted disruption of the *Tab1* gene causes embryonic lethality and defects in cardiovascular and lung morphogenesis. *Mech Dev* 2002;119:239–49.
- [25] Howell M, Hill CS. XSmad2 directly activates the activin-inducible, dorsal mesoderm gene *XFKH1* in *Xenopus* embryos. *EMBO J* 1997;16:7411–21.
- [26] Dempsey CE, Sakurai H, Sugita T, Guesdon F. Alternative splicing and gene structure of the transforming growth factor beta-activated kinase 1. *Biochim Biophys Acta* 2000;1517:46–52.
- [27] Gotoh I, Adachi M, Nishida E. Identification and characterisation of a novel MAP kinase kinase kinase, MLTK. *J Biol Chem* 2001;276:4276–86.
- [28] Dostal DE, Baker KM. Angiotensin II stimulation of left ventricular hypertrophy in adult rat heart. Mediation by the AT1 receptor. *Am J Hypertens* 1992;5:276–80.
- [29] Chua CC, Diglio CA, Siu BB, Chua BH. Angiotensin II induces TGF-beta 1 production in rat heart endothelial cells. *Biochim Biophys Acta* 1994;1223:141–7.
- [30] Gray MO, Long CS, Kalinyak JE, Li HT, Karliner JS. Angiotensin II stimulates cardiac myocyte hypertrophy via paracrine release of TGF-beta 1 and endothelin-1 from fibroblasts. *Cardiovasc Res* 1998;40:352–63.
- [31] Yamaguchi K, Nagai S, Ninomiya-Tsuji J, Nishita M, Tamai K, Irie K, et al. XIAP, a cellular member of the inhibitor of apoptosis protein family, links the receptors to TAB1-TAK1 in the BMP signaling pathway. *EMBO J* 1999;18:179–87.
- [32] Birkey Reffey S, Wurthner JU, Parks WT, Roberts AB, Duckett CS. X-linked inhibitor of apoptosis protein functions as a cofactor in transforming growth factor-beta signaling. *J Biol Chem* 2001;276:26542–9.
- [33] Sano Y, Harada J, Tashiro S, Gotoh-Mandeville R, Maekawa T, Ishii S. ATF-2 is a common nuclear target of Smad and TAK1 pathways in transforming growth factor-beta signaling. *J Biol Chem* 1999;274:8949–57.
- [34] Hanafusa H, Ninomiya-Tsuji J, Masuyama N, Nishita M, Fujisawa J, Shibuya H, et al. Involvement of the p38 mitogen-activated protein kinase pathway in transforming growth factor-beta-induced gene expression. *J Biol Chem* 1999;274:27161–7.
- [35] Hayes SA, Huang X, Kambhampati S, Platanius LC, Bergan RC. p38 MAP kinase modulates Smad-dependent changes in human prostate cell adhesion. *Oncogene* 2003;22:4841–50.
- [36] Edlund S, Bu S, Schuster N, Aspenstrom P, Heuchel R, Heldin NE, et al. Transforming growth factor-beta1 (TGF-beta)-induced apoptosis of prostate cancer cells involves Smad7-dependent activation of p38 by TGF-beta-activated kinase 1 and mitogen-activated protein kinase kinase 3. *Mol Biol Cell* 2003;14:529–44.
- [37] Dowdy SC, Mariani A, Janknecht R. HER2/Neu and TAK1-mediated up-regulation of the transforming growth factor beta inhibitor Smad7 via the ETS protein ER81. *J Biol Chem* 2003;278:44377–84.



- [38] Hoffmann A, Preobrazhenska O, Wodarczyk C, Medler Y, Winkel A, Shahab S, et al. Transforming growth factor- $\beta$ -activated kinase-1 (TAK1), a MAP3K, interacts with Smad proteins and interferes with osteogenesis in murine mesenchymal progenitors. *J Biol Chem* 2005;280:27271–83.
- [39] Azhar M, Schultz Jel J, Grupp I, Dorn 2nd GW, Meneton P, Molin DG, et al. Transforming growth factor  $\beta$  in cardiovascular development and function. *Cytokine Growth Factor Rev* 2003;14:391–407.