

Mcphie, Jamie ORCID: <https://orcid.org/0000-0001-5290-1685> , Richardson, T., Bridger, A., Cole, S. and Butler-Eldridge, Taylor (2019) Definitions, debates & directions for contemporary psychogeography. In: 4th World Congress of Psychogeography, 6-8 September 2019, Huddersfield, UK. (Unpublished)

Downloaded from: <http://insight.cumbria.ac.uk/id/eprint/5460/>

Usage of any items from the University of Cumbria's institutional repository 'Insight' must conform to the following fair usage guidelines.

Any item and its associated metadata held in the University of Cumbria's institutional repository Insight (unless stated otherwise on the metadata record) may be copied, displayed or performed, and stored in line with the JISC fair dealing guidelines (available [here](#)) for educational and not-for-profit activities

provided that

- the authors, title and full bibliographic details of the item are cited clearly when any part of the work is referred to verbally or in the written form
- a hyperlink/URL to the original Insight record of that item is included in any citations of the work
- the content is not changed in any way
- all files required for usage of the item are kept together with the main item file.

You may not

- sell any part of an item
- refer to any part of an item without citation
- amend any item or contextualise it in a way that will impugn the creator's reputation
- remove or alter the copyright statement on an item.

The full policy can be found [here](#).

Alternatively contact the University of Cumbria Repository Editor by emailing insight@cumbria.ac.uk.

Posthuman Psychogeography: Let the line take you for a walk

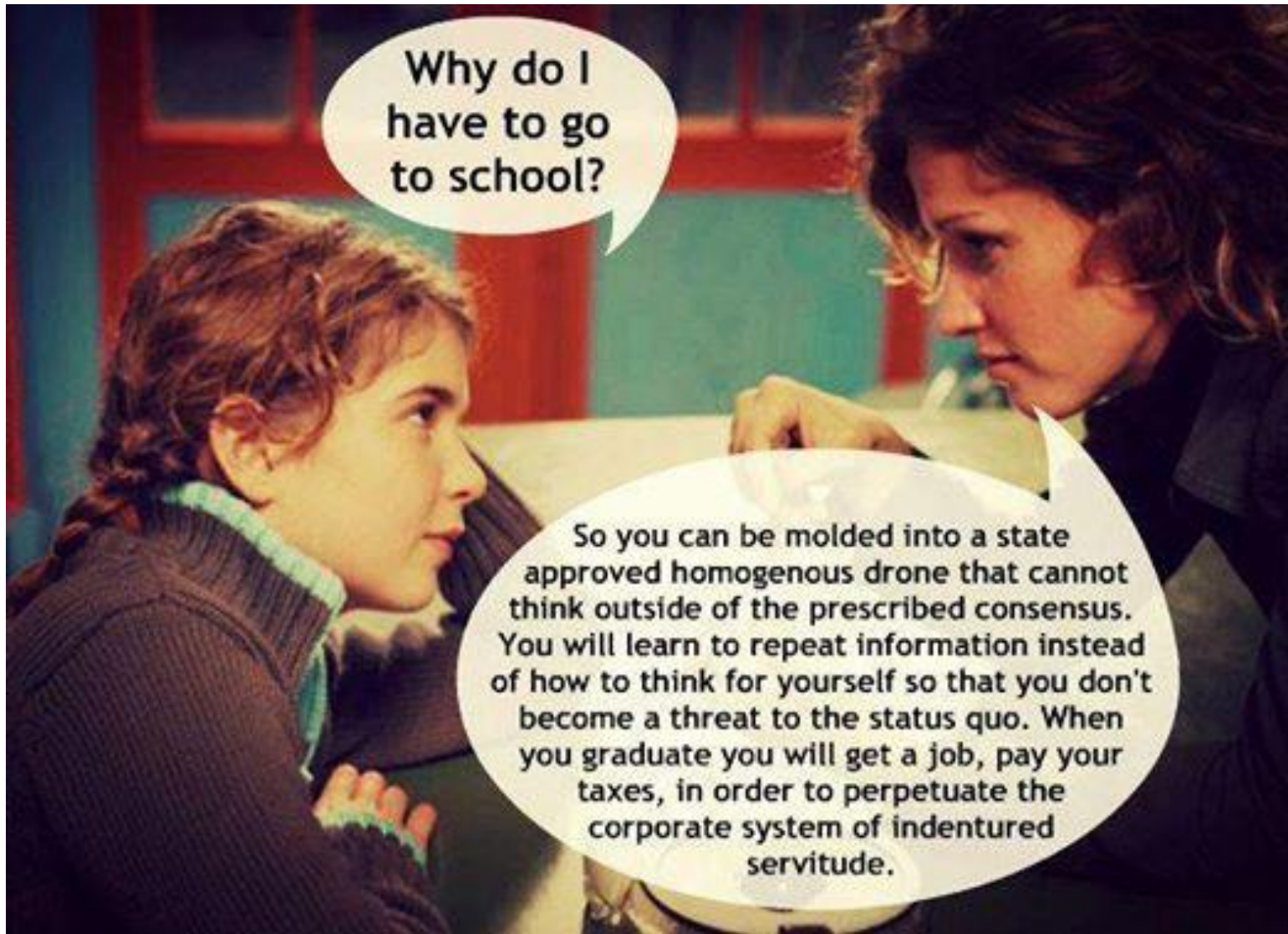
Dr Jamie Mcphie

4WCoP

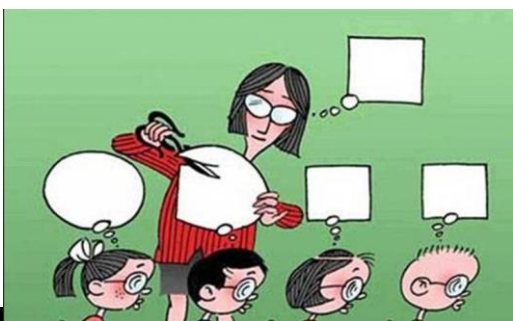
The boundaries that once defined certain territories, such as urban-rural, culture-nature or mind-body distinctiveness, are shifting and as such are ripe for reterritorialization

(Deleuze and Guattari, cited in Schroeder, 2012, p.252)

Cite as: Mcphie, J., Richardson, T., Bridger, A., Cole, S., Butler-Eldridge, T. (2019) Definitions, Debates & Directions for Contemporary Psychogeography. *The 4th world congress of Psychogeography*, 6th 7th & 8th September 2019, Huddersfield University.



www.youtube.com/watch?v=JI8AMRbqY6w



THERE IS NOTHING YOU CAN DO ABOUT IT. YOU ARE OVERWHELMED WITH IMAGES. THEY CARRY YOU AWAY, THEY REPLACE YOU, YOU ARE DREAMING. THE SPECTACLE IS LIFE AS A DREAM - WE ALL WANT THIS.

JULIA KRISTEVA

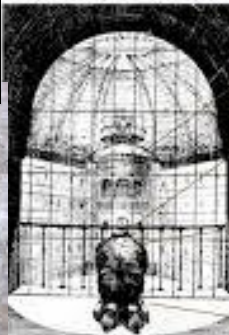


... the Panopticon must not be understood as a dream building: it is the diagram of a mechanism of power reduced to its ideal form.

Michel Foucault, *Discipline and Punish*, 1977.



The Prisoner and the Free



can't see the watcher
knows he's being watched
rounded back
all alone
within a crowd of people



The spectacle is the bad dream of a modern society in chains and ultimately expresses nothing more than its wish for sleep. The spectacle is the guardian of that sleep.

— Guy Debord —

AZ QUOTES

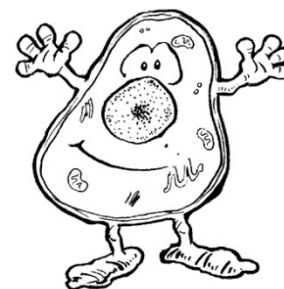
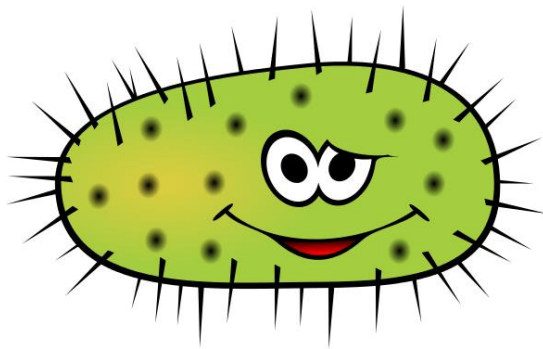
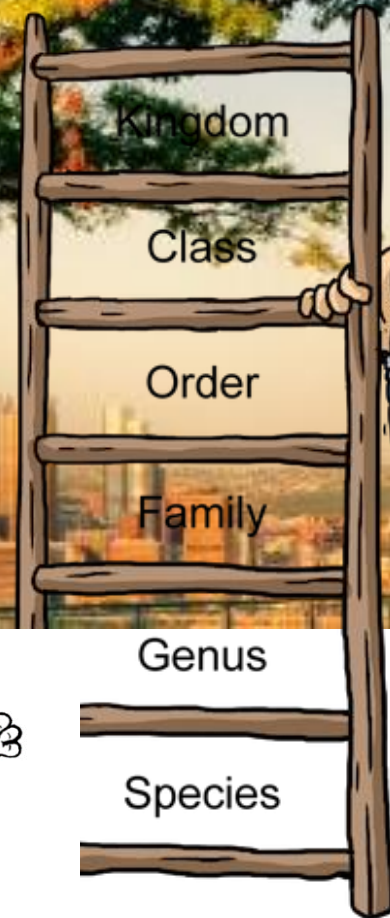


Rainbows

A photograph of a double rainbow over a green field. The primary rainbow is bright and clear, while the secondary rainbow is fainter and positioned higher in the sky. The sky is dark and cloudy, and the field is lush green.

Manzotti's rainbow

Environment and perceiver specify
each other!



The Wasp and the Orchid

the orchid becomes
the sexual
organ of the
wasp

the wasp becomes
part of the
orchid's
reproductive
apparatus

“organism and environment enfold into each other and unfold from one another in the fundamental circularity that is life itself”

(Varela et al., 1991, p. 217)



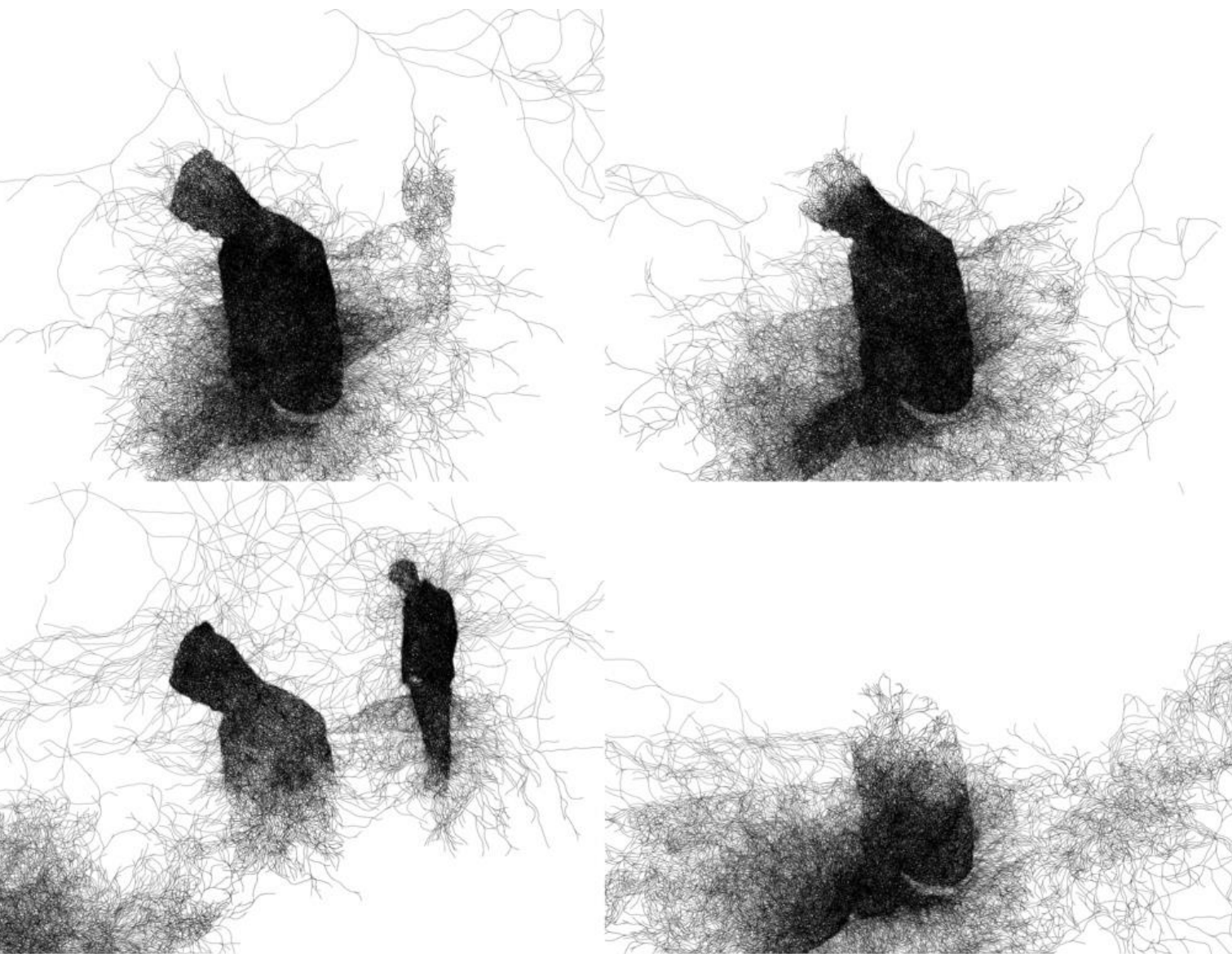
Humans

‘...assumption that the mind/brain/body remains somehow separate from the wider environment.’

(Harris, 2008)

‘the mind is not in the head’

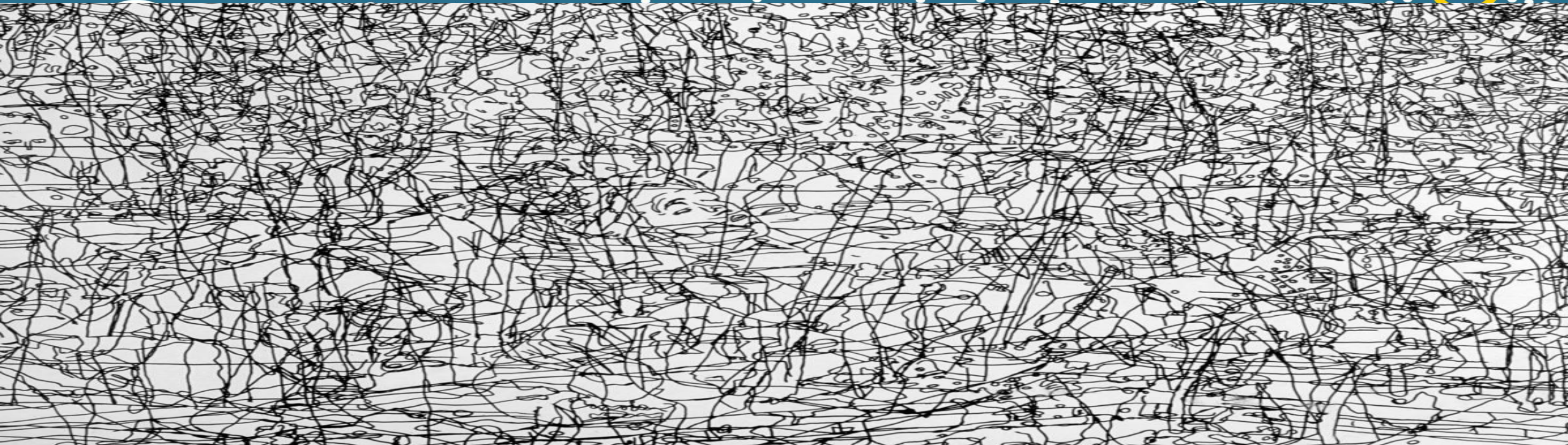
(Varela, 1999, p. 72)



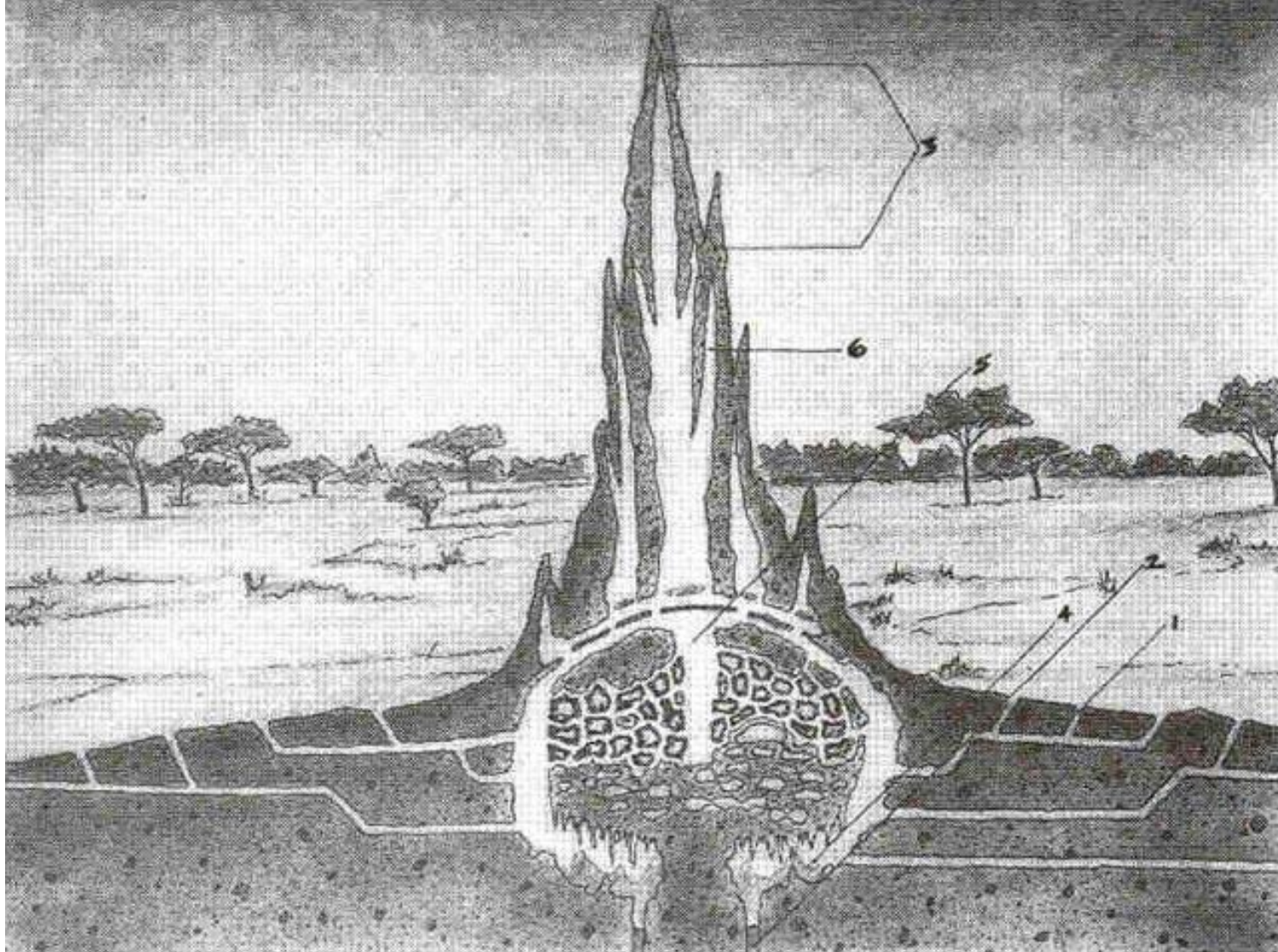
A haecceity is an
individual organism
understood as a bundle or
meshwork of interwoven
lines rather than
interconnected points

(Ingold, 2011)

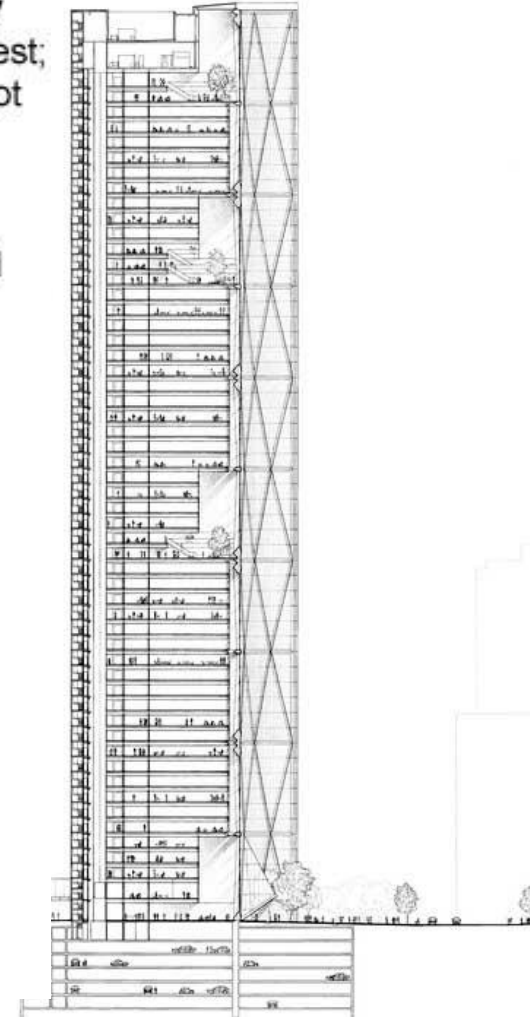
'I can't sum myself up because you can't add a chair and two apples' (Lispector)







1. night entrance and exit;
2. underground water supply for drinking and cooling nest;
3. "lungs" that expel rising hot air;
4. Cool air eventually sinks back to the cellar;
5. Warm air rises via central air duct;
6. Interior oxygen diffuses through the chimneys.



‘a democracy extended to things’

Stones

‘...a stone-in-the-water’

(Ingold, 2008)





a kind of stony wisdom

‘A large boulder, its surface spreading with crinkly red and grey lichens, is able to influence the events around it, and even to influence the thinking of those folks who lean against it – lending their thoughts a certain gravity, and a kind of stony wisdom’ (Abram, 2004)

inorganic life

- ‘the eco-mental system called Lake Erie is a part of your wider eco-mental system’. (Bateson)
- ‘It is not so much that organisms are not alive, but that life can be articulated in all things’. (Dema)



The capitalist production of subjectivity

- The capitalist production of subjectivity leads many of us to believe we act alone and are individually responsible for our compulsions but as Jane Bennett reminds us,
- ‘the locus of political responsibility is a human-nonhuman assemblage’ which ‘presents individuals as simply incapable of bearing full responsibility for their effects’ and so ‘the ethical responsibility of an individual human now resides in one’s response to the assemblage in which one finds oneself participating’.

<https://www.youtube.com/watch?v=PhtTjqpQwF0> – see Dr Haydon Mort